



[Go to Product page](#)

Datasheet for ABIN185626

anti-CTNNA1 antibody (Internal Region)

4 Images

Overview

Quantity:	100 µg
Target:	CTNNA1
Binding Specificity:	Internal Region
Reactivity:	Human
Host:	Goat
Clonality:	Polyclonal
Conjugate:	This CTNNA1 antibody is un-conjugated
Application:	Western Blotting (WB), Immunohistochemistry (IHC), ELISA

Product Details

Purpose:	Catenin alpha1
Immunogen:	Peptide with sequence C-KREKQDETQTKIK, from the internal region of the protein sequence according to NP_001894.2.
Sequence:	KREKQDETQT KIK
Isotype:	IgG
Cross-Reactivity:	Dog, Human, Mouse, Rat
Purification:	Purified from goat serum by ammonium sulphate precipitation followed by antigen affinity chromatography using the immunizing peptide.
Grade:	Verified

Target Details

Target:	CTNNA1
Alternative Name:	CTNNA1 (CTNNA1 Products)
Background:	Catenin (cadherin-associated protein), alpha 1, 102 kDa , HGNC:2509, CTNNA1, CAP102, FLJ36832 , alpha 1 (102kD), alpha-E-catenin, alpha-catenin, alphaE-catenin, cadherin-associated protein,102 kDa, catenin (cadherin-associated protein), alpha 1 (102kD), cat
Gene ID:	1495, 12385, 307505
NCBI Accession:	NP_001894
Pathways:	Regulation of Muscle Cell Differentiation , Cell-Cell Junction Organization , Maintenance of Protein Location

Application Details

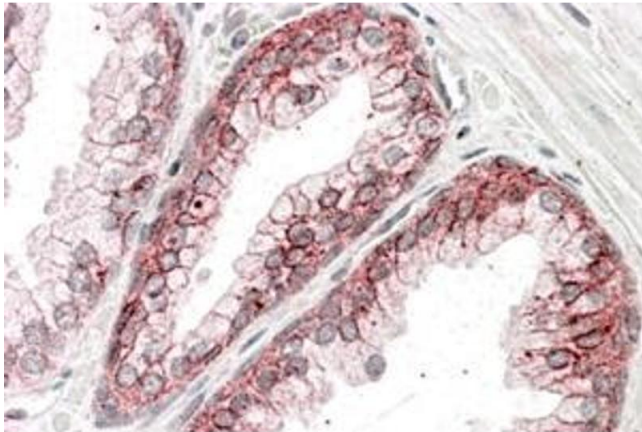
Application Notes:	Immunohistochemistry: Paraffin embedded Human Prostate and Uterus. Recommended concentration: 3.75 µg/mL. Western Blot: Approx 100 kDa band observed in human colon and human skin lysates (calculated MW of 100 kDa according to NP_001894.2). Recommended concentration: 1-3 µg/mL. Peptide ELISA: antibody detection limit dilution 1:32000.
Restrictions:	For Research Use only

Handling

Format:	Liquid
Concentration:	0.5 mg/mL
Buffer:	Supplied at 0.5 mg/mL in Tris saline, 0.02 % sodium azide, pH 7.3 with 0.5 % bovine serum albumin.
Preservative:	Sodium azide
Precaution of Use:	This product contains Sodium azide: a POISONOUS AND HAZARDOUS SUBSTANCE which should be handled by trained staff only.
Handling Advice:	Minimize freezing and thawing.
Storage:	-20 °C
Storage Comment:	Aliquot and store at -20°C, with minimal freeze/thawing. A working aliquot may be refrigerated

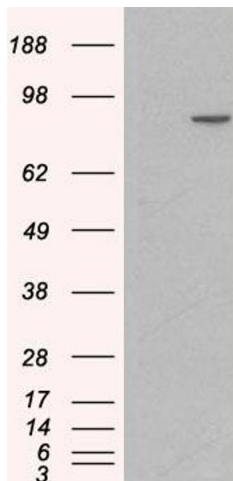
at 4°C for a few weeks and still remain viable.

Images



Immunohistochemistry

Image 1. ABIN185626 (3.75µg/ml) staining of paraffin embedded Human Prostate. Steamed antigen retrieval with citrate buffer pH 6, AP-staining.



Western Blotting

Image 2. HEK293 overexpressing Human CTNNA1 (RC201766) and probed with ABIN185626 (mock transfection in first lane), tested by Origene.



Western Blotting

Image 3. ABIN185626 (1µg/ml) staining of human colon lysate (35µg protein in RIPA buffer). Primary incubation was 1 hour. Detected by chemiluminescence.

Please check the [product details page](#) for more images. Overall 4 images are available for ABIN185626.