

Datasheet for ABIN185628
anti-Amphiphysin antibody (Internal Region)[Go to Product page](#)

2 Images

Overview

Quantity:	100 µg
Target:	Amphiphysin (AMPH)
Binding Specificity:	Internal Region
Reactivity:	Human, Mouse
Host:	Goat
Clonality:	Polyclonal
Conjugate:	This Amphiphysin antibody is un-conjugated
Application:	Western Blotting (WB), ELISA, Immunohistochemistry (IHC)

Product Details

Purpose:	Amphiphysin / AMPH
Immunogen:	Peptide with sequence C-KRKDESRISKAE, from the internal region of the protein sequence according to NP_001626.1, NP_647477.1.
Sequence:	KRKDESRISK AE
Isotype:	IgG
Specificity:	This antibody is expected to recognise both reported isoforms (NP_001626.1 and NP_647477.1).
Cross-Reactivity:	Dog, Human, Mouse, Rat
Purification:	Purified from goat serum by ammonium sulphate precipitation followed by antigen affinity chromatography using the immunizing peptide.

Product Details

Grade: Verified

Target Details

Target: Amphiphysin (AMPH)

Alternative Name: AMPH ([AMPH Products](#))

Background: AMPH, amphiphysin, amphiphysin (Stiff-Man syndrome with breast cancer 128 kDa autoantigen) , HGNC:471, AMPH1

Gene ID: 273, 218038

NCBI Accession: [NP_001626](#), [NP_647477](#)

Application Details

Application Notes: Immunohistochemistry: In paraffin embedded Human Cerebellum shows nuclear and fibrous staining. Recommended concentration, 2-4 µg/mL.

Western Blot: Approx 125 kDa band observed in mouse brain lysates (calculated MW of 76.3 kDa according to NP_001626.1). The observed molecular weight corresponds to earlier findings in literature with different antibodies (Wigge et al, Mol Biol Cell. 1997

Peptide ELISA: antibody detection limit dilution 1:16000.

Restrictions: For Research Use only

Handling

Format: Liquid

Concentration: 0.5 mg/mL

Buffer: Supplied at 0.5 mg/mL in Tris saline, 0.02 % sodium azide, pH 7.3 with 0.5 % bovine serum albumin.

Preservative: Sodium azide

Precaution of Use: This product contains Sodium azide: a POISONOUS AND HAZARDOUS SUBSTANCE which should be handled by trained staff only.

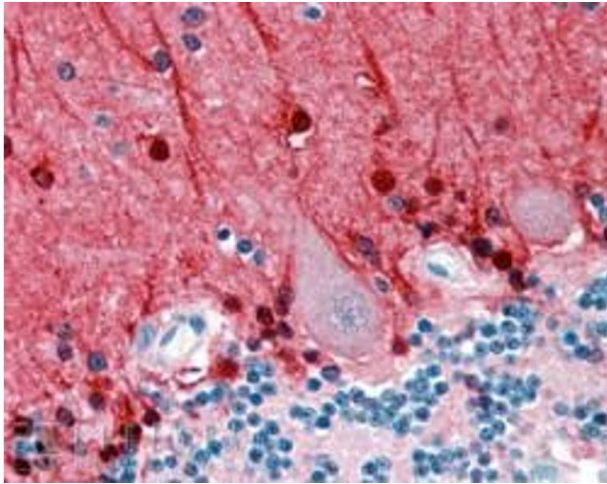
Handling Advice: Minimize freezing and thawing.

Storage: -20 °C

Storage Comment: Aliquot and store at -20°C, with minimal freeze/thawing. A working aliquot may be refrigerated

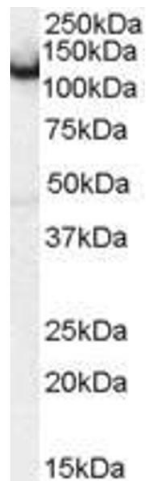
at 4°C for a few weeks and still remain viable.

Images



Immunohistochemistry

Image 1. ABIN185628 (2.5µg/ml) staining of paraffin embedded Human Cerebellum. Steamed antigen retrieval with citrate buffer pH 6, AP-staining.



Western Blotting

Image 2. ABIN185628 (0.5µg/ml) staining of mouse brain lysate (35µg protein in RIPA buffer). Primary incubation was 1 hour. Detected by chemiluminescence.