



[Go to Product page](#)

Datasheet for ABIN185637

## anti-5HT1B Receptor antibody (C-Term)

### 2 Images

#### Overview

Quantity:	100 µg
Target:	5HT1B Receptor (HTR1B)
Binding Specificity:	C-Term
Reactivity:	Human, Mouse
Host:	Goat
Clonality:	Polyclonal
Conjugate:	This 5HT1B Receptor antibody is un-conjugated
Application:	Western Blotting (WB), ELISA

#### Product Details

Purpose:	Serotonin receptor 1B / HTR1B
Immunogen:	Peptide with sequence C-SNEDFKQAFHK, from the C Terminus of the protein sequence according to NP_000854.1.
Sequence:	SNEDFKQAFH K
Isotype:	IgG
Cross-Reactivity:	Cat, Cow, Dog, Human, Mouse, Pig, Rat
Purification:	Purified from goat serum by ammonium sulphate precipitation followed by antigen affinity chromatography using the immunizing peptide.
Grade:	Verified

## Target Details

---

Target:	5HT1B Receptor (HTR1B)
Alternative Name:	HTR1B ( <a href="#">HTR1B Products</a> )
Background:	HTR1B, 5-hydroxytryptamine (serotonin) receptor 1B, 5-HT1B, 5-HT1DB, HTR1D2, HTR1DB, S12
Gene ID:	3351, 15551, 25075
NCBI Accession:	<a href="#">NP_000854</a>
Pathways:	<a href="#">JAK-STAT Signaling</a> , <a href="#">cAMP Metabolic Process</a> , <a href="#">Regulation of G-Protein Coupled Receptor Protein Signaling</a> , <a href="#">Feeding Behaviour</a> , <a href="#">S100 Proteins</a>

## Application Details

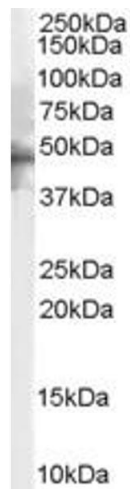
---

Application Notes:	Western Blot: Approx 48 kDa band observed in Human Brain (Cerebellum) and 48+45 kDa band observed in Mouse Spinal Cord lysates (calculated MW of 43.6 kDa according to NP_000854.1). Recommended concentration: 1-3 µg/mL. Primary incubation was 1 hour. Peptide ELISA: antibody detection limit dilution 1:128000.
Restrictions:	For Research Use only

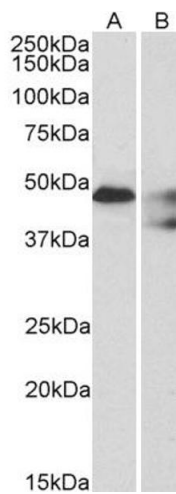
## Handling

---

Format:	Liquid
Concentration:	0.5 mg/mL
Buffer:	Supplied at 0.5 mg/mL in Tris saline, 0.02 % sodium azide, pH 7.3 with 0.5 % bovine serum albumin.
Preservative:	Sodium azide
Precaution of Use:	This product contains Sodium azide: a POISONOUS AND HAZARDOUS SUBSTANCE which should be handled by trained staff only.
Handling Advice:	Minimize freezing and thawing.
Storage:	-20 °C
Storage Comment:	Aliquot and store at -20°C, with minimal freeze/thawing. A working aliquot may be refrigerated at 4°C for a few weeks and still remain viable.



**Image 1.** ABIN185637 (2µg/ml) staining of Human Brain lysate (35µg protein in RIPA buffer). Primary incubation was 1 hour. Detected by chemiluminescence.



### Western Blotting

**Image 2.** ABIN185637 (1µg/ml) staining of Human Cerebellum (A) and Mouse spinal cord (B) lysates (35µg protein in RIPA buffer). Detected by chemiluminescence.