

Datasheet for ABIN185639

anti-Leptin Receptor antibody (Internal Region)**7** Images[Go to Product page](#)

Overview

Quantity:	100 µg
Target:	Leptin Receptor (LEPR)
Binding Specificity:	Internal Region
Reactivity:	Human, Mouse, Rat
Host:	Goat
Clonality:	Polyclonal
Conjugate:	This Leptin Receptor antibody is un-conjugated
Application:	Western Blotting (WB), ELISA, Immunohistochemistry (IHC), Flow Cytometry (FACS)

Product Details

Purpose:	Leptin Receptor
Immunogen:	Peptide with sequence C-TQDDIEKHQSDAG, from the internal region of the protein sequence according to NP_002294.2, NP_001003679.1, NP_001003680.1.
Sequence:	TQDDIEKHQS DAG
Isotype:	IgG
Specificity:	This antibody is expected to recognise all three reported isoforms (NP_002294.2, NP_001003679.1, NP_001003680.1).
Cross-Reactivity:	Dog, Human
Purification:	Purified from goat serum by ammonium sulphate precipitation followed by antigen affinity chromatography using the immunizing peptide.

Product Details

Grade: Verified

Target Details

Target: Leptin Receptor (LEPR)

Alternative Name: LEPR ([LEPR Products](#))

Background: LEPR , leptin receptor , CD295, OBR , OB receptor, LeprB

Gene ID: 3953

NCBI Accession: [NP_002294](#), [NP_001003679](#), [NP_001003680](#)

Pathways: [JAK-STAT Signaling](#), [AMPK Signaling](#), [Feeding Behaviour](#)

Application Details

Application Notes: Immunohistochemistry: Paraffin embedded Human Kidney. Recommended concentration: 4-6 µg/mL.

Western Blot: Approx 140-150 kDa band observed in Human Cerebellum, Mouse Foetal Brain and Rat Brain lysates (calculated MW of 132 kDa according to Human NP_002294.2 and 130.8 kDa according to Mouse NP_666258.2 and Rat NP_036728.1). This molecular weight is

Peptide ELISA: antibody detection limit dilution 1:128000.

Comment: **Flow Cytometry:** Flow cytometric analysis of K562 cells. Recommended concentration: 10ug/ml.

Restrictions: For Research Use only

Handling

Format: Liquid

Concentration: 0.5 mg/mL

Buffer: Supplied at 0.5 mg/mL in Tris saline, 0.02 % sodium azide, pH 7.3 with 0.5 % bovine serum albumin.

Preservative: Sodium azide

Precaution of Use: This product contains Sodium azide: a POISONOUS AND HAZARDOUS SUBSTANCE which should be handled by trained staff only.

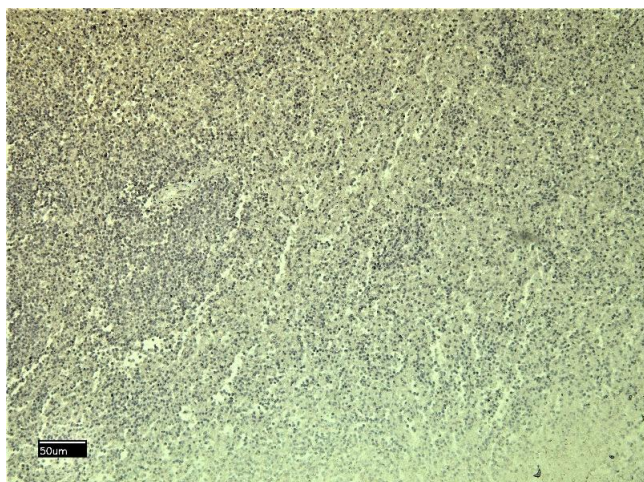
Handling Advice: Minimize freezing and thawing.

Handling

Storage: -20 °C

Storage Comment: Aliquot and store at -20°C, with minimal freeze/thawing. A working aliquot may be refrigerated at 4°C for a few weeks and still remain viable.

Images



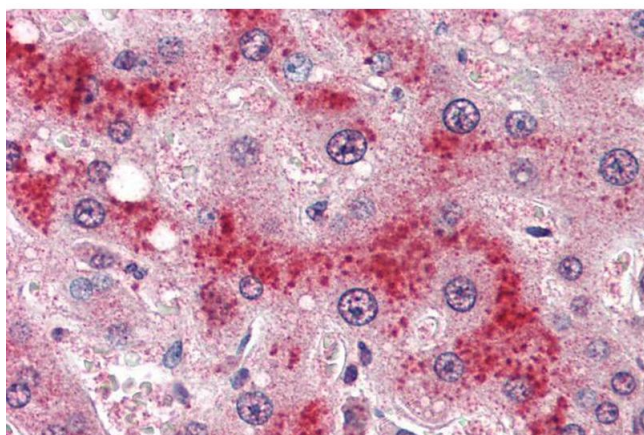
Immunohistochemistry

Image 1. (ABIN185639) Negative Control showing staining of paraffin embedded Human Spleen, with no primary antibody.



Western Blotting

Image 2. ABIN185639 (1µg/ml) staining of Human Cerebral Cortex lysate (35µg protein in RIPA buffer). Detected by chemiluminescence.



Immunohistochemistry

Image 3. ABIN185639 (4µg/ml) staining of paraffin embedded Human Liver. Steamed antigen retrieval with citrate buffer pH 6, AP-staining.

Please check the [product details page](#) for more images. Overall 7 images are available for ABIN185639.