

Datasheet for ABIN185640  
**anti-MAP3K7 antibody (Internal Region)**[Go to Product page](#)

## 4 Images

## Overview

Quantity:	100 µg
Target:	MAP3K7
Binding Specificity:	Internal Region
Reactivity:	Human, Mouse
Host:	Goat
Clonality:	Polyclonal
Conjugate:	This MAP3K7 antibody is un-conjugated
Application:	Western Blotting (WB), ELISA, Flow Cytometry (FACS)

## Product Details

Purpose:	TAK1 / MAP3K7
Immunogen:	Peptide with sequence C-AELDQDEKDQNT, from the internal region of the protein sequence according to NP_003179.1, NP_663304.1.
Sequence:	AELDQDEKDQ QNT
Isotype:	IgG
Specificity:	This antibody is expected to recognise isoform A (NP_003179.1) and isoform B (NP_663304.1).
Cross-Reactivity:	Cow, Human, Mouse, Rat
Purification:	Purified from goat serum by ammonium sulphate precipitation followed by antigen affinity chromatography using the immunizing peptide.
Grade:	Verified

## Target Details

Target:	MAP3K7
Alternative Name:	MAP3K7 ( <a href="#">MAP3K7 Products</a> )
Background:	MAP3K7 , TAK1, mitogen-activated protein kinase kinase kinase 7 , TGF1a , TGF-beta activated kinase 1, transforming growth factor-beta-activated kinase 1
Gene ID:	6885, 26409
NCBI Accession:	<a href="#">NP_003179</a> , <a href="#">NP_663304</a>
Pathways:	<a href="#">NF-kappaB Signaling</a> , <a href="#">TCR Signaling</a> , <a href="#">TLR Signaling</a> , <a href="#">Fc-epsilon Receptor Signaling Pathway</a> , <a href="#">Activation of Innate immune Response</a> , <a href="#">Regulation of Leukocyte Mediated Immunity</a> , <a href="#">Positive Regulation of Immune Effector Process</a> , <a href="#">Production of Molecular Mediator of Immune Response</a> , <a href="#">Tube Formation</a> , <a href="#">Toll-Like Receptors Cascades</a> , <a href="#">BCR Signaling</a> , <a href="#">Ubiquitin Proteasome Pathway</a>

## Application Details

Application Notes:	Western Blot: Approx 75 kDa band observed in lysates of cell lines HeLa, Daudi and NIH3T3, and approx. 80 kDa in lysates of cell line U937 (calculated MW of 67.2 according to Human NP_663304.1 and Mouse NP_033342.1). This molecular weight is routinely observed. Peptide ELISA: antibody detection limit dilution 1:8000.
Comment:	<b>Flow Cytometry:</b> Flow cytometric analysis of HeLa cells. Recommended concentration: 10ug/ml.
Restrictions:	For Research Use only

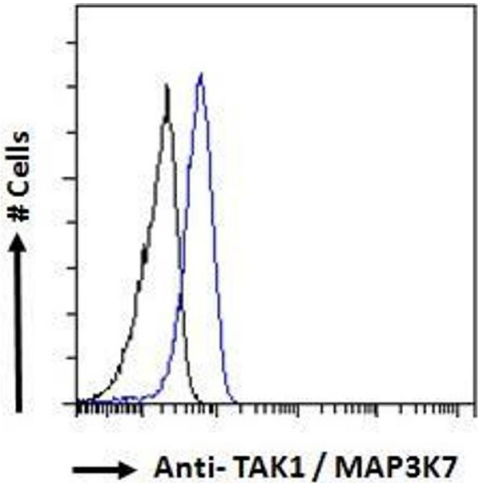
## Handling

Format:	Liquid
Concentration:	0.5 mg/mL
Buffer:	Supplied at 0.5 mg/mL in Tris saline, 0.02 % sodium azide, pH 7.3 with 0.5 % bovine serum albumin.
Preservative:	Sodium azide
Precaution of Use:	This product contains Sodium azide: a POISONOUS AND HAZARDOUS SUBSTANCE which should be handled by trained staff only.
Handling Advice:	Minimize freezing and thawing.

Handling

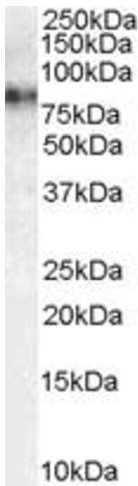
Storage:	-20 °C
Storage Comment:	Aliquot and store at -20°C, with minimal freeze/thawing. A working aliquot may be refrigerated at 4°C for a few weeks and still remain viable.

Images

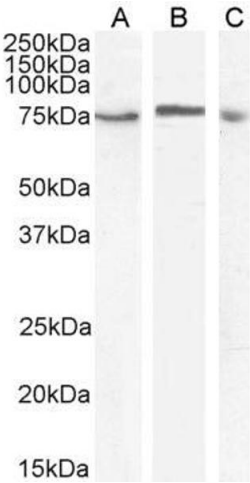


Flow Cytometry

**Image 1.** ABIN185640 Flow cytometric analysis of paraformaldehyde fixed HeLa cells (blue line), permeabilized with 0.5% Triton. Primary incubation 1hr (10ug/ml) followed by Alexa Fluor 488 secondary antibody (1ug/ml). IgG control: Unimmunized goat IgG (black line) followed by Alexa Fluor 488 secondary antibody.



**Image 2.** ABIN185640 (1 ug/ml) staining of HeLa cell lysate (35 ug protein in RIPA buffer). Primary incubation was 1 hour. Detected by chemiluminescence.



Western Blotting

**Image 3.** ABIN185640 (1µg/ml) staining of HeLa (A) and U937 (B) and (2ug/ml) Daudi (C) cell lysate (35µg protein in RIPA buffer). Detected by chemiluminescence.

Please check the [product details page](#) for more images. Overall 4 images are available for ABIN185640.