

Datasheet for ABIN185645
anti-Chromogranin A antibody (Internal Region)



[Go to Product page](#)

3 Images

Overview

Quantity:	100 µg
Target:	Chromogranin A (CHGA)
Binding Specificity:	Internal Region
Reactivity:	Human
Host:	Goat
Clonality:	Polyclonal
Conjugate:	This Chromogranin A antibody is un-conjugated
Application:	Flow Cytometry (FACS), Western Blotting (WB), ELISA

Product Details

Purpose:	Chromogranin A precursor
Immunogen:	Peptide with sequence C-QGAKERAHQQKHH, from the internal region of the protein sequence according to NP_001266.1.
Sequence:	QGAKERAHQQ KKH
Isotype:	IgG
Cross-Reactivity:	Human
Purification:	Purified from goat serum by ammonium sulphate precipitation followed by antigen affinity chromatography using the immunizing peptide.
Grade:	Verified

Target Details

Target:	Chromogranin A (CHGA)
Alternative Name:	CHGA (CHGA Products)
Background:	Chromogranin A precursor, chromogranin A (parathyroid secretory protein 1) , CHGA, CGA , parathyroid secretory protein 1, Vasostatin, Pancreastatin, Parastatin, Pituitary secretory protein I, SP1
Gene ID:	1113
NCBI Accession:	NP_001266 , NP_001288619
Pathways:	Negative Regulation of Hormone Secretion , cAMP Metabolic Process , Regulation of G-Protein Coupled Receptor Protein Signaling

Application Details

Application Notes:	Western Blot: Approx 50 kDa band observed in lysates of cell lines Jurkat and LNCaP, and in Human Cerebellum, Pancreas and Kidney lysates. A band at 35 kDa was also observed in pancreas lysate (calculated MW of 50.7 kDa according to NP_001266.1 isoform 1 a Peptide ELISA: antibody detection limit dilution 1:128000.
Comment:	Flow Cytometry: Flow cytometric analysis of Jurkat cells. Recommended concentration: 10ug/ml.
Restrictions:	For Research Use only

Handling

Format:	Liquid
Concentration:	0.5 mg/mL
Buffer:	Supplied at 0.5 mg/mL in Tris saline, 0.02 % sodium azide, pH 7.3 with 0.5 % bovine serum albumin.
Preservative:	Sodium azide
Precaution of Use:	This product contains Sodium azide: a POISONOUS AND HAZARDOUS SUBSTANCE which should be handled by trained staff only.
Handling Advice:	Minimize freezing and thawing.
Storage:	-20 °C
Storage Comment:	Aliquot and store at -20°C, with minimal freeze/thawing. A working aliquot may be refrigerated

at 4°C for a few weeks and still remain viable.



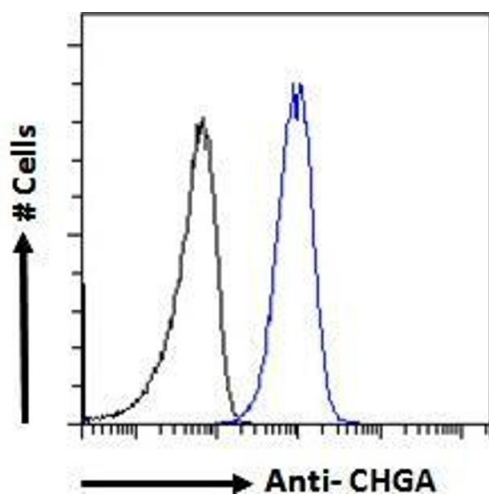
Western Blotting

Image 1. ABIN185645 (0.1µg/ml) staining of isoform 1+ 2 Human Kidney lysate (35µg protein in RIPA buffer). Detected by chemiluminescence.



Western Blotting

Image 2. ABIN185645 (2µg/ml) staining of isoform 1 Human Brain (A) and isoform 1+2 (B) lysate (35µg protein in RIPA buffer). Detected by chemiluminescence.



Flow Cytometry

Image 3. ABIN185645 Flow cytometric analysis of paraformaldehyde fixed A549 cells (blue line), permeabilized with 0.5% Triton. Primary incubation 1hr (10ug/ml) followed by Alexa Fluor 488 secondary antibody (1ug/ml). IgG control: Unimmunized goat IgG (black line) followed by Alexa Fluor 488 secondary antibody.