

Datasheet for ABIN185648  
**anti-RPL19 antibody (Internal Region)**[Go to Product page](#)

## 2 Images

## Overview

Quantity:	100 µg
Target:	RPL19
Binding Specificity:	Internal Region
Reactivity:	Human
Host:	Goat
Clonality:	Polyclonal
Conjugate:	This RPL19 antibody is un-conjugated
Application:	ELISA, Flow Cytometry (FACS)

## Product Details

Purpose:	Ribosomal Protein L19 / RPL19
Immunogen:	Peptide with sequence C-LRRYRESKKIDRH, from the internal region of the protein sequence according to NP_000972.1.
Sequence:	LRRYRESKKI DRH
Isotype:	IgG
Predicted Reactivity:	Human, Mouse, Rat, Dog
Purification:	Purified from goat serum by ammonium sulphate precipitation followed by antigen affinity chromatography using the immunizing peptide.
Grade:	Verified

## Target Details

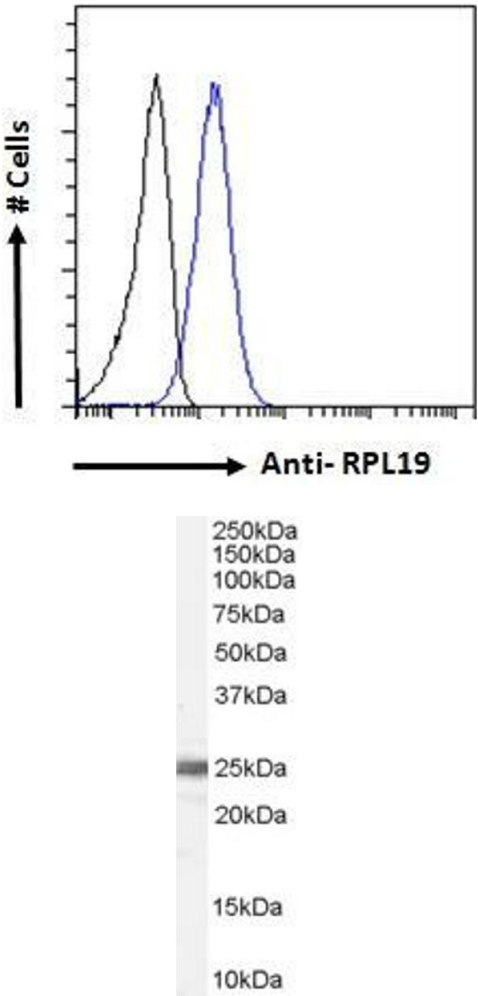
Target:	RPL19
Alternative Name:	RPL19 ( <a href="#">RPL19 Products</a> )
Background:	RPL19, ribosomal protein L19 , HGNC:10312, DKFZp779D216, FLJ27452, MGC71997 , 60S ribosomal protein L19, ribosomal protein L19, cytosolic, N-terminus truncated
Gene ID:	6143
NCBI Accession:	<a href="#">NP_000972</a>

## Application Details

Application Notes:	DS WB Results: Preliminary experiments showed bands at approx 25+55 kDa in Human Colo-rectal carcinoma, Human Testes lysate and HEK293 cell lysate after 0.3-3 µg/mL antibody staining (calculated MW of 23.5 kDa according to NP_000972.1). Primary incubation 1 hour at room temperature.  Peptide ELISA: antibody detection limit dilution 1:64000.
Comment:	<b>Flow Cytometry:</b> Flow cytometric analysis of A431 cells. Recommended concentration: 10ug/ml.
Restrictions:	For Research Use only

## Handling

Format:	Liquid
Concentration:	0.5 mg/mL
Buffer:	Supplied at 0.5 mg/mL in Tris saline, 0.02 % sodium azide, pH 7.3 with 0.5 % bovine serum albumin.
Preservative:	Sodium azide
Precaution of Use:	This product contains Sodium azide: a POISONOUS AND HAZARDOUS SUBSTANCE which should be handled by trained staff only.
Handling Advice:	Minimize freezing and thawing.
Storage:	-20 °C
Storage Comment:	Aliquot and store at -20°C, with minimal freeze/thawing. A working aliquot may be refrigerated at 4°C for a few weeks and still remain viable.



Flow Cytometry

**Image 1.** ABIN185648 Flow cytometric analysis of paraformaldehyde fixed A431 cells (blue line), permeabilized with 0.5% Triton. Primary incubation 1hr (10ug/ml) followed by Alexa Fluor 488 secondary antibody (1ug/ml). IgG control: Unimmunized goat IgG (black line) followed by Alexa Fluor 488 secondary antibody.

**Image 2.** ABIN185648 (0.1µg/ml) staining of Human Testis lysate (35µg protein in RIPA buffer). Primary incubation was 1 hour. Detected by chemiluminescence.