



[Go to Product page](#)

Datasheet for ABIN185651

anti-Catalase antibody (Internal Region)

6 Images

Overview

Quantity:	100 µg
Target:	Catalase (CAT)
Binding Specificity:	Internal Region
Reactivity:	Human, Mouse
Host:	Goat
Clonality:	Polyclonal
Conjugate:	This Catalase antibody is un-conjugated
Application:	Western Blotting (WB), Immunohistochemistry (IHC), ELISA

Product Details

Purpose:	Catalase / CAT
Immunogen:	Peptide with sequence C-DKYNAEKPKNAIHT, from the internal region of the protein sequence according to NP_001743.1.
Sequence:	DKYNAEKPKN AIHT
Isotype:	IgG
Cross-Reactivity:	Dog, Human, Mouse
Purification:	Purified from goat serum by ammonium sulphate precipitation followed by antigen affinity chromatography using the immunizing peptide.
Grade:	Verified

Target Details

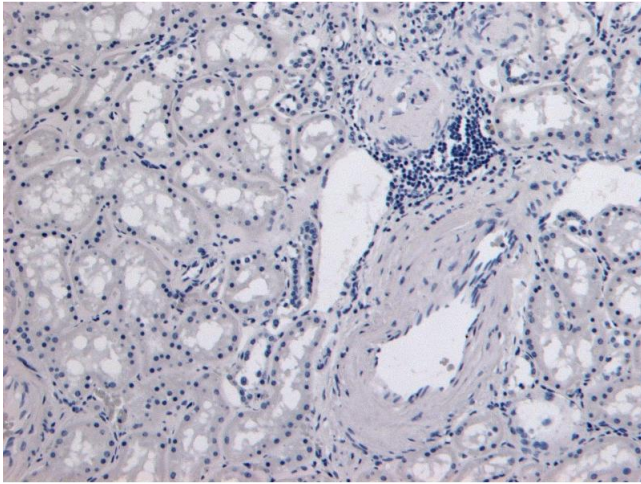
Target:	Catalase (CAT)
Alternative Name:	CAT (CAT Products)
Background:	CAT, catalase , HGNC:1516, MGC138422, MGC138424
Gene ID:	847, 12359
NCBI Accession:	NP_001743
Pathways:	Cellular Glucan Metabolic Process , Cell RedoxHomeostasis , Photoperiodism

Application Details

Application Notes:	Immunohistochemistry: Paraffin embedded Human Kidney. Recommended concentration: 4-6 µg/mL. Western Blot: Approx 60 kDa band observed in Human and Mouse Kidney and Liver lysates (calculated MW of 59.8 kDa according to Human NP_001743.1 and Mouse NP_033934.2). Recommended concentration: 0.003-0.01 µg/mL. Primary incubation 1 hour at room temperature. Peptide ELISA: antibody detection limit dilution 1:128000.
Restrictions:	For Research Use only

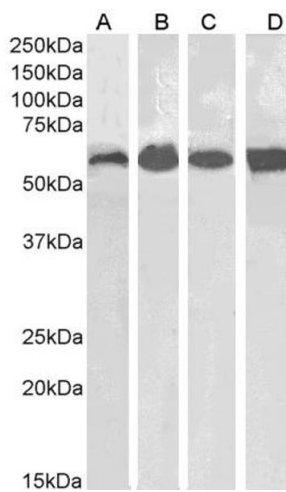
Handling

Format:	Liquid
Concentration:	0.5 mg/mL
Buffer:	Supplied at 0.5 mg/mL in Tris saline, 0.02 % sodium azide, pH 7.3 with 0.5 % bovine serum albumin.
Preservative:	Sodium azide
Precaution of Use:	This product contains Sodium azide: a POISONOUS AND HAZARDOUS SUBSTANCE which should be handled by trained staff only.
Handling Advice:	Minimize freezing and thawing.
Storage:	-20 °C
Storage Comment:	Aliquot and store at -20°C, with minimal freeze/thawing. A working aliquot may be refrigerated at 4°C for a few weeks and still remain viable.



Immunohistochemistry

Image 1. (ABIN185651) Negative Control showing staining of paraffin embedded Human Kidney, with no primary antibody.



Western Blotting

Image 2. ABIN185651 (0.1µg/ml) staining of Human Kidney (A) and Liver (B) and Mouse Kidney (C) and Liver (D) lysates (35µg protein in RIPA buffer). Primary incubation was 1 hour. Detected by chemiluminescence.



Image 3. ABIN185651 (1µg/ml) staining of Human Kidney lysate (35µg protein in RIPA buffer). Primary incubation was 1 hour. Detected by chemiluminescence.

Please check the [product details page](#) for more images. Overall 6 images are available for ABIN185651.