



Datasheet for ABIN185655
anti-GRP94 antibody (Internal Region)



[Go to Product page](#)

7 Images

Overview

Quantity:	100 µg
Target:	GRP94 (HSP90B1)
Binding Specificity:	Internal Region
Reactivity:	Human, Mouse
Host:	Goat
Clonality:	Polyclonal
Conjugate:	This GRP94 antibody is un-conjugated
Application:	Western Blotting (WB), Immunohistochemistry (IHC), Immunofluorescence (IF), Flow Cytometry (FACS), ELISA

Product Details

Purpose:	GRP94 / TRA1
Immunogen:	Peptide with sequence C-KEGVKFDSESEKTKE, from the internal region of the protein sequence according to NP_003290.1.
Sequence:	KEGVKFDSESE KTKE
Isotype:	IgG
Cross-Reactivity:	Cow, Dog, Human, Mouse, Pig, Rat, Zebrafish (Danio rerio)
Purification:	Purified from goat serum by ammonium sulphate precipitation followed by antigen affinity chromatography using the immunizing peptide.
Grade:	Verified

Target Details

Target:	GRP94 (HSP90B1)
Alternative Name:	HSP90B1 (HSP90B1 Products)
Background:	TRA1, GRP94, tumor rejection antigen (gp96) 1 , HGNC:12028, ECGP, GP96, Tumor rejection antigen-1 (gp96), endothelial cell (HBMEC) glycoprotein, glucose regulated protein, 94 kDa, tumor rejection antigen (gp96) 1
Gene ID:	7184, 22027, 362862
NCBI Accession:	NP_003290
Pathways:	Thyroid Hormone Synthesis , Activation of Innate immune Response , ER-Nucleus Signaling , Toll-Like Receptors Cascades

Application Details

Application Notes:	Immunohistochemistry: Paraffin embedded Human Uterus and Liver. Recommended concentration: 3-5 µg/mL. Western Blot: Approx 100 kDa band observed in lysates of cell lines HEK293, A549, HeLa, U2OS and NIH3T3 and in preliminary testing of MCF7 and HepG2 cell lysate (calculated MW of 92.5 kDa according to Human NP_003290.1 and Mouse NP_035761.1). This molecule Peptide ELISA: antibody detection limit dilution 1:32000.
Comment:	Immunofluorescence: Strong expression of the protein seen in the ER and cytoplasm of A431 and HeLa cells. Recommended concentration: 10µg/ml. Flow Cytometry: Flow cytometric analysis of A431 cells. Recommended concentration
Restrictions:	For Research Use only

Handling

Format:	Liquid
Concentration:	0.5 mg/mL
Buffer:	Supplied at 0.5 mg/mL in Tris saline, 0.02 % sodium azide, pH 7.3 with 0.5 % bovine serum albumin.
Preservative:	Sodium azide
Precaution of Use:	This product contains Sodium azide: a POISONOUS AND HAZARDOUS SUBSTANCE which should be handled by trained staff only.
Handling Advice:	Minimize freezing and thawing.

Handling

Storage: -20 °C

Storage Comment: Aliquot and store at -20°C, with minimal freeze/thawing. A working aliquot may be refrigerated at 4°C for a few weeks and still remain viable.

Images

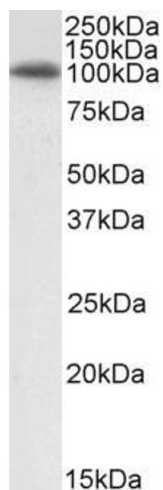


Image 1. ABIN185655 (0.03µg/ml) staining of 3T3 lysate (35µg protein in RIPA buffer). Primary incubation was 1 hour. Detected by chemiluminescence.



Western Blotting

Image 2. ABIN185655 (0.1µg/ml) staining of U2OS cell lysate (35µg protein in RIPA buffer). Detected by chemiluminescence.



Western Blotting

Image 3. ABIN185655 (0.1µg/ml) staining of NIH3T3 cell lysate (35µg protein in RIPA buffer). Detected by chemiluminescence.

Please check the [product details page](#) for more images. Overall 7 images are available for ABIN185655.