

Datasheet for ABIN185660

anti-Melanoma gp100 antibody (C-Term)

4 Images

[Go to Product page](#)

Overview

Quantity:	100 µg
Target:	Melanoma gp100 (PMEL)
Binding Specificity:	C-Term
Reactivity:	Human, Mouse
Host:	Goat
Clonality:	Polyclonal
Conjugate:	This Melanoma gp100 antibody is un-conjugated
Application:	Immunofluorescence (IF), Western Blotting (WB), ELISA

Product Details

Purpose:	Silver homologue / Pmel 17 (C-terminus)
Immunogen:	Peptide with sequence CPIGENSPLLSGQQ, from the C Terminus of the protein sequence according to NP_008859.1.
Sequence:	CPIGENSPLL SGQQ
Isotype:	IgG
Cross-Reactivity:	Human, Mouse
Purification:	Purified from goat serum by ammonium sulphate precipitation followed by antigen affinity chromatography using the immunizing peptide.
Grade:	Verified

Target Details

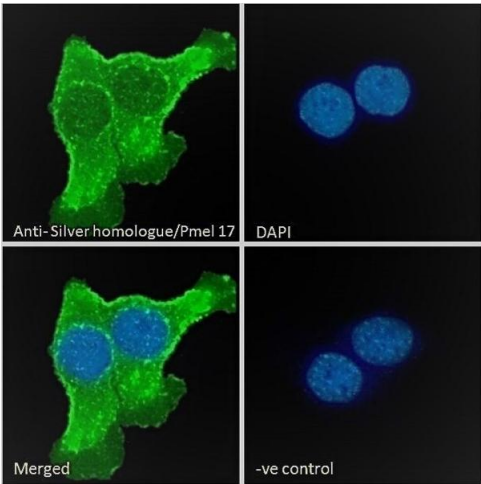
Target:	Melanoma gp100 (PMEL)
Alternative Name:	PMEL (PMEL Products)
Background:	Silver homolog (mouse) , PMEL17, SILV , D12S53E, ME20, SI, SIL, gp100 , Melanocyte protein mel 17, Pmel 17, Silver, mouse, homolog of, silver (mouse homolog) like, silver (mouse homolog)-like, silver homolog
Gene ID:	6490, 20431, 362818
NCBI Accession:	NP_008859

Application Details

Application Notes:	Western Blot: Approx 70 kDa band observed in Mouse Skin lysates (calculated MW of 66.3 kDa according to Mouse NP_068682.2). Recommended concentration: 1-3 µg/mL. Primary incubation was 1 hour. Peptide ELISA: antibody detection limit dilution 1:16000.
Comment:	Immunofluorescence: Strong expression of the protein seen in the plasma membrane and cytoplasm of A431 cells. Recommended concentration: 10µg/ml.
Restrictions:	For Research Use only

Handling

Format:	Liquid
Concentration:	0.5 mg/mL
Buffer:	Supplied at 0.5 mg/mL in Tris saline, 0.02 % sodium azide, pH 7.3 with 0.5 % bovine serum albumin.
Preservative:	Sodium azide
Precaution of Use:	This product contains Sodium azide: a POISONOUS AND HAZARDOUS SUBSTANCE which should be handled by trained staff only.
Handling Advice:	Minimize freezing and thawing.
Storage:	-20 °C
Storage Comment:	Aliquot and store at -20°C, with minimal freeze/thawing. A working aliquot may be refrigerated at 4°C for a few weeks and still remain viable.



Immunofluorescence

Image 1. (ABIN185660) Immunofluorescence analysis of paraformaldehyde fixed A431 cells, permeabilized with 0.15 % Triton. Primary incubation 1hr (10 µg/mL) followed by Alexa Fluor 488 secondary antibody (2 µg/mL), showing membrane and cytoplasmic staining. The nuclear sta

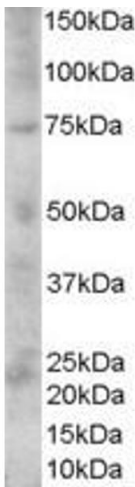
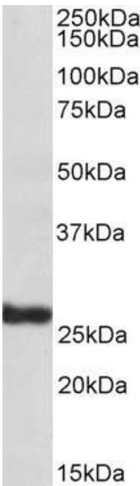


Image 2. ABIN185660 (1µg/ml) staining of Human Skin lysate (35µg protein in RIPA buffer). Primary incubation was 1 hour. Detected by chemiluminescence.



Western Blotting

Image 3. ABIN185660 (1µg/ml) staining of Human Skin lysate (35µg protein in RIPA buffer). Primary incubation was 1 hour. Detected by chemiluminescence.

Please check the [product details page](#) for more images. Overall 4 images are available for ABIN185660.