

Datasheet for ABIN185663
anti-ZNF217 antibody (Internal Region)

3 Images

[Go to Product page](#)

Overview

Quantity:	100 µg
Target:	ZNF217
Binding Specificity:	Internal Region
Reactivity:	Human
Host:	Goat
Clonality:	Polyclonal
Conjugate:	This ZNF217 antibody is un-conjugated
Application:	ELISA, Immunohistochemistry (IHC), Immunofluorescence (IF), Flow Cytometry (FACS)

Product Details

Purpose:	ZNF217
Immunogen:	Peptide with sequence C-KNAADDSADKVNKN, from the internal region of the protein sequence according to NP_006517.1.
Sequence:	KNAADDSADK VNKN
Isotype:	IgG
Cross-Reactivity:	Human
Purification:	Purified from goat serum by ammonium sulphate precipitation followed by antigen affinity chromatography using the immunizing peptide.
Grade:	Verified

Target Details

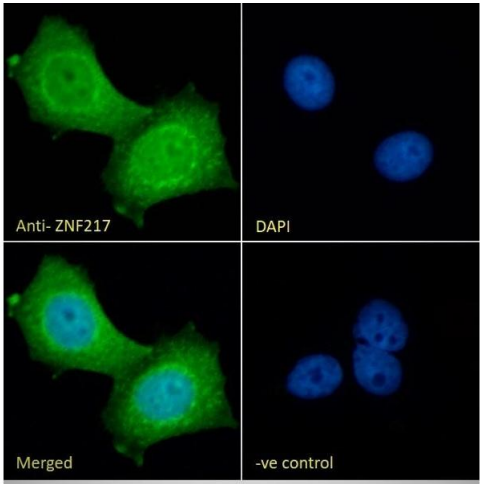
Target:	ZNF217
Alternative Name:	ZNF217 (ZNF217 Products)
Background:	ZNF217, zinc finger protein 217, ZABC1
Gene ID:	7764
NCBI Accession:	NP_006517

Application Details

Application Notes:	Immunohistochemistry: In paraffin embedded Human Prostate shows nuclear staining in select secretory cells. Recommended concentration: 3-6 µg/mL. Peptide ELISA: antibody detection limit dilution 1:16000.
Comment:	Immunofluorescence: Strong expression of the protein seen in the nuclei of MCF7 cells. Recommended concentration: 10µg/ml. Flow Cytometry: Flow cytometric analysis of MCF7 cells. Recommended concentration: 10ug/ml.
Restrictions:	For Research Use only

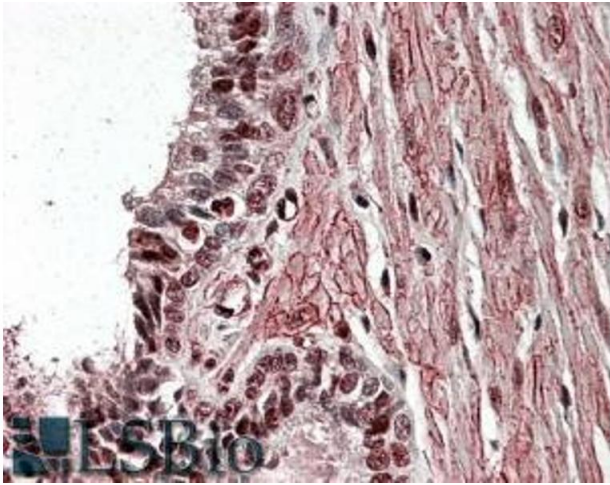
Handling

Format:	Liquid
Concentration:	0.5 mg/mL
Buffer:	Supplied at 0.5 mg/mL in Tris saline, 0.02 % sodium azide, pH 7.3 with 0.5 % bovine serum albumin.
Preservative:	Sodium azide
Precaution of Use:	This product contains Sodium azide: a POISONOUS AND HAZARDOUS SUBSTANCE which should be handled by trained staff only.
Handling Advice:	Minimize freezing and thawing.
Storage:	-20 °C
Storage Comment:	Aliquot and store at -20°C, with minimal freeze/thawing. A working aliquot may be refrigerated at 4°C for a few weeks and still remain viable.



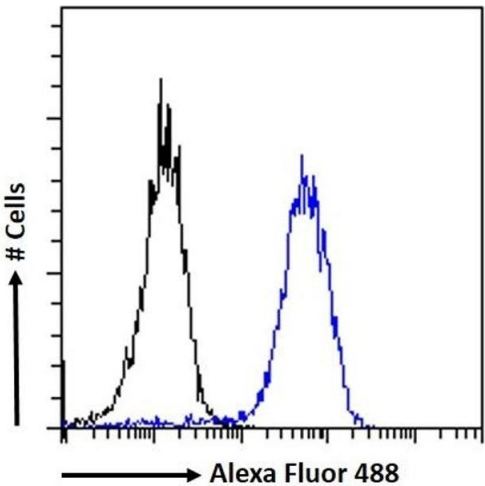
Immunofluorescence

Image 1. (ABIN185663) Immunofluorescence analysis of paraformaldehyde fixed MCF7 cells, permeabilized with 0.15 % Triton. Primary incubation 1hr (10 µg/mL) followed by Alexa Fluor 488 secondary antibody (2 µg/mL), showing nuclear staining. The nuclear stain is DAPI (blue). Negative control: Unimmunized goat IgG (10 µg/mL) followed by Alexa Fluor 488 secondary antibody (2 µg/mL).



Immunohistochemistry

Image 2. ABIN185663 (3.8µg/ml) staining of paraffin embedded Human Prostate. Steamed antigen retrieval with citrate buffer pH 6, AP-staining.



Flow Cytometry

Image 3. (ABIN185663) Flow cytometric analysis of paraformaldehyde fixed MCF7 cells (blue line), permeabilized with 0.5 % Triton. Primary incubation 1hr (10 µg/mL) followed by Alexa Fluor 488 secondary antibody (1 µg/mL). IgG control: Unimmunized goat IgG (black line) followed by Alexa Fluor 488 secondary antibody.