

Datasheet for ABIN185664

## anti-Ezrin antibody (Internal Region)



[Go to Product page](#)

### 2 Images

#### Overview

Quantity:	100 µg
Target:	Ezrin (EZR)
Binding Specificity:	Internal Region
Reactivity:	Human
Host:	Goat
Clonality:	Polyclonal
Conjugate:	This Ezrin antibody is un-conjugated
Application:	Western Blotting (WB), ELISA, Immunohistochemistry (IHC)

#### Product Details

Purpose:	Ezrin / villin 2
Immunogen:	Peptide with sequence C-QDYEEKTKKAER, from the internal region of the protein sequence according to NP_003370.2.
Sequence:	QDYEEKTKKA ER
Isotype:	IgG
Cross-Reactivity:	Dog, Human
Purification:	Purified from goat serum by ammonium sulphate precipitation followed by antigen affinity chromatography using the immunizing peptide.
Grade:	Verified

### Target Details

Target:	Ezrin (EZR)
Alternative Name:	EZR ( <a href="#">EZR Products</a> )
Background:	Villin 2 (ezrin) , ezrin, VIL2, CVIL, CVL, DKFZp762H157, FLJ26216, MGC1584 , cytovillin, villin 2
Gene ID:	7430, 22350, 54319
NCBI Accession:	<a href="#">NP_003370</a>
Pathways:	<a href="#">Maintenance of Protein Location</a>

### Application Details

Application Notes:	Immunohistochemistry: Paraffin embedded Human Colon and Kidney. Recommended concentration: 3.75 µg/mL.  Western Blot: Approx 80 kDa band observed in Human Placenta lysates (calculated MW of 69.4 kDa according to NP_003370.2). The observed molecular weight corresponds to earlier findings in literature with different antibodies (Zhu et al, Am J Physiol Cell Ph  Peptide ELISA: antibody detection limit dilution 1:16000.
Restrictions:	For Research Use only

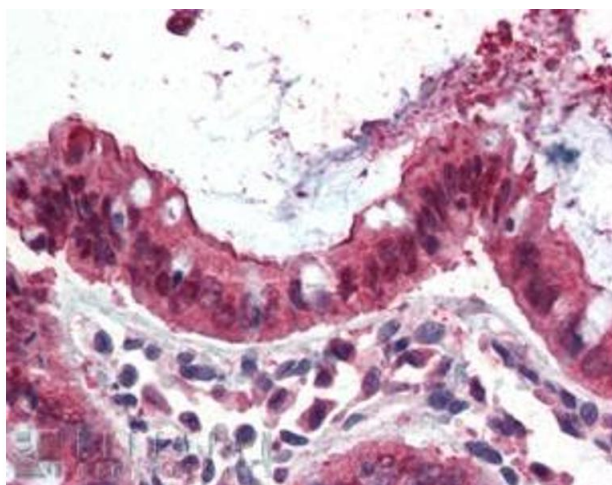
### Handling

Format:	Liquid
Concentration:	0.5 mg/mL
Buffer:	Supplied at 0.5 mg/mL in Tris saline, 0.02 % sodium azide, pH 7.3 with 0.5 % bovine serum albumin.
Preservative:	Sodium azide
Precaution of Use:	This product contains Sodium azide: a POISONOUS AND HAZARDOUS SUBSTANCE which should be handled by trained staff only.
Handling Advice:	Minimize freezing and thawing.
Storage:	-20 °C
Storage Comment:	Aliquot and store at -20°C, with minimal freeze/thawing. A working aliquot may be refrigerated at 4°C for a few weeks and still remain viable.



#### Western Blotting

**Image 1.** ABIN185664 (1µg/ml) staining of Human Placenta lysate (35µg protein in RIPA buffer). Primary incubation was 1 hour. Detected by chemiluminescence.



#### Immunohistochemistry

**Image 2.** ABIN185664 (3.75µg/ml) staining of paraffin embedded Human Colon. Steamed antigen retrieval with citrate buffer pH 6, AP-staining.