



[Go to Product page](#)

Datasheet for ABIN185667

anti-Patched 1 antibody (Internal Region)

2 Images

1 Publication

Overview

Quantity:	100 µg
Target:	Patched 1 (PTCH1)
Binding Specificity:	Internal Region
Reactivity:	Human, Mouse
Host:	Goat
Clonality:	Polyclonal
Conjugate:	This Patched 1 antibody is un-conjugated
Application:	Western Blotting (WB), ELISA, Immunofluorescence (IF)

Product Details

Purpose:	PTCH (Internal)
Immunogen:	Peptide with sequence C-HPESRHHPPSNPRQQ, from the internal region of the protein sequence according to NP_000255.2, NP_001077072.1, NP_001077071.1, NP_001077075.1.
Sequence:	HPESRHHPPS NPRQQ
Isotype:	IgG
Specificity:	This antibody is expected to recognise all four reported isoforms (NP_000255.2, NP_001077072.1, NP_001077071.1, NP_001077075.1). Reported variants represent identical protein (NP_001077075.1, NP_001077076.1, NP_001077073.1, NP_001077074.1).
Cross-Reactivity:	Cow, Dog, Human, Pig
Purification:	Purified from goat serum by ammonium sulphate precipitation followed by antigen affinity

Product Details

chromatography using the immunizing peptide.

Grade: Verified

Target Details

Target: Patched 1 (PTCH1)

Alternative Name: PTCH1 ([PTCH1 Products](#))

Background: PTCH, patched homolog (Drosophila), RP11-43505.3, BCNS, FLJ42602, HPE7, NBCCS, PTC, PTC1, PTCH1, PTCH protein +12b, PTCH protein +4', PTCH protein -10, patched, patched (Drosophila) homolog

Gene ID: 5727

NCBI Accession: [NP_000255](#), [NP_001077072](#), [NP_001077071](#), [NP_001077075](#)

Pathways: [Hedgehog Signaling](#), [Carbohydrate Homeostasis](#), [Tube Formation](#)

Application Details

Application Notes: Western Blot: Approx 150 kDa band observed in Human Brain lysates (calculated MW of 153.9 kDa according to NP_001077071.1). Recommended concentration: 1-3 µg/mL. Primary incubation 1 hour at room temperature.
Peptide ELISA: antibody detection limit dilution 1:32000.

Comment: **Immunofluorescence** :Expression of the protein seen in the Golgi/membrane of NIH3T3 cells.
Recommended concentration: 5µg/ml.

Restrictions: For Research Use only

Handling

Format: Liquid

Concentration: 0.5 mg/mL

Buffer: Supplied at 0.5 mg/mL in Tris saline, 0.02 % sodium azide, pH 7.3 with 0.5 % bovine serum albumin.

Preservative: Sodium azide

Precaution of Use: This product contains Sodium azide: a POISONOUS AND HAZARDOUS SUBSTANCE which should be handled by trained staff only.

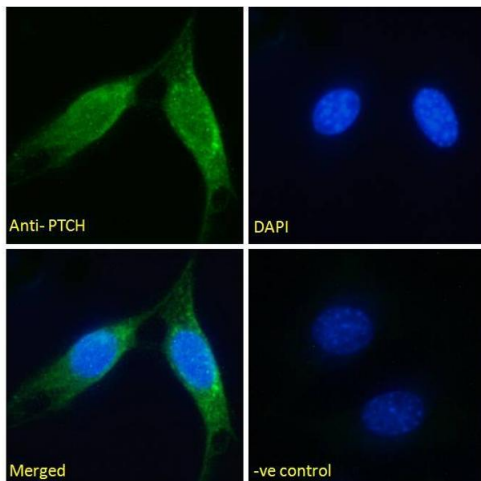
Handling

Handling Advice:	Minimize freezing and thawing.
Storage:	-20 °C
Storage Comment:	Aliquot and store at -20°C, with minimal freeze/thawing. A working aliquot may be refrigerated at 4°C for a few weeks and still remain viable.

Publications

Product cited in: Gerardo Valadez, Grover, Carter, Calcutt, Abiria, Lundberg, Williams, Cooper: "Identification of Hedgehog pathway responsive glioblastomas by isocitrate dehydrogenase mutation." in: **Cancer letters**, Vol. 328, Issue 2, pp. 297-306, (2012) ([PubMed](#)).

Images



Immunofluorescence

Image 1. ABIN185667 Immunofluorescence analysis of paraformaldehyde fixed NIH3T3 cells, permeabilized with 0.15% Triton. Primary incubation 1hr (5ug/ml) followed by Alexa Fluor 488 secondary antibody (2ug/ml), showing Golgi/membrane staining. The nuclear stain is DAPI (blue). Negative control: Unimmunized goat IgG (10ug/ml) followed by Alexa Fluor 488 secondary antibody (2ug/ml).



Western Blotting

Image 2. ABIN185667 (1µg/ml) staining of Human Brain lysate (35µg protein in RIPA buffer). Detected by chemiluminescence.