

Datasheet for ABIN185671

anti-Glutathione Peroxidase 7 antibody (Internal Region)[Go to Product page](#)**2** Images

Overview

Quantity:	100 µg
Target:	Glutathione Peroxidase 7 (GPX7)
Binding Specificity:	Internal Region
Reactivity:	Human
Host:	Goat
Clonality:	Polyclonal
Conjugate:	This Glutathione Peroxidase 7 antibody is un-conjugated
Application:	Western Blotting (WB), ELISA

Product Details

Purpose:	GPX7
Immunogen:	Peptide with sequence CNQFGQQEPDSNK, from the internal region of the protein sequence according to NP_056511.2.
Sequence:	CNQFGQQEPD SNK
Isotype:	IgG
Cross-Reactivity:	Human
Purification:	Purified from goat serum by ammonium sulphate precipitation followed by antigen affinity chromatography using the immunizing peptide.
Grade:	Verified

Target Details

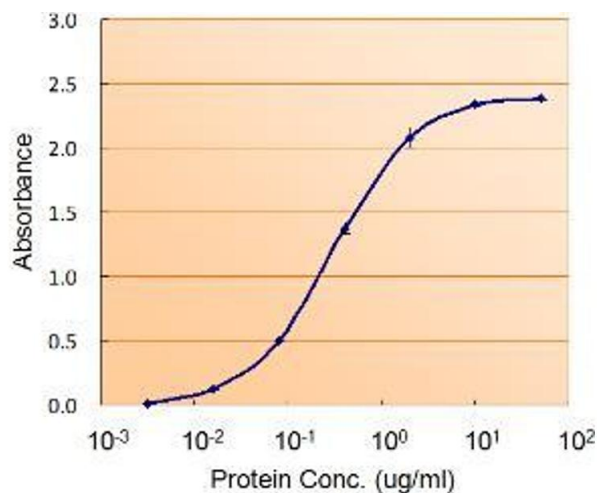
Target:	Glutathione Peroxidase 7 (GPX7)
Alternative Name:	GPX7 (GPX7 Products)
Background:	GPX7, glutathione peroxidase 7 [Homo sapiens] , HGNC:4559, CL683, FLJ14777, GPX6, NPGPx, non-selenocysteine containing phospholipid hydroperoxide glutathione peroxidase
Gene ID:	2882, 67305, 298376
NCBI Accession:	NP_056511
Pathways:	Thyroid Hormone Synthesis

Application Details

Application Notes:	Western Blot: Approx 20 kDa band observed in Human Prostate lysates (calculated MW of 21.0 kDa according to NP_056511.2). Recommended concentration: 0.3-1 µg/mL. An additional band of unknown identity was also consistently observed at 40 kDa. This band was Peptide ELISA: antibody detection limit dilution 1:32000.
Restrictions:	For Research Use only

Handling

Format:	Liquid
Concentration:	0.5 mg/mL
Buffer:	Supplied at 0.5 mg/mL in Tris saline, 0.02 % sodium azide, pH 7.3 with 0.5 % bovine serum albumin.
Preservative:	Sodium azide
Precaution of Use:	This product contains Sodium azide: a POISONOUS AND HAZARDOUS SUBSTANCE which should be handled by trained staff only.
Handling Advice:	Minimize freezing and thawing.
Storage:	-20 °C
Storage Comment:	Aliquot and store at -20°C, with minimal freeze/thawing. A working aliquot may be refrigerated at 4°C for a few weeks and still remain viable.



Enzyme Immunoassay

Image 1. ABIN185671 (5ug/ml) as the reporter with as the capture rabbit antibody (5ug/ml).

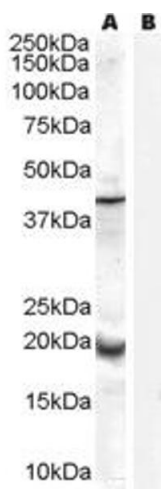


Image 2. ABIN185671 (0.3µg/ml) staining of Human Prostate lysate (35µg protein in RIPA buffer) with (B) and without (A) blocking with the immunising peptide. Primary incubation was 1 hour. Detected by chemiluminescence.