



Datasheet for ABIN185673

anti-Serotonin Receptor 3A antibody (Internal Region)



[Go to Product page](#)

3 Images

1 Publication

Overview

Quantity:	100 µg
Target:	Serotonin Receptor 3A (HTR3A)
Binding Specificity:	Internal Region
Reactivity:	Human, Rat
Host:	Goat
Clonality:	Polyclonal
Conjugate:	This Serotonin Receptor 3A antibody is un-conjugated
Application:	ELISA, Immunohistochemistry (IHC), Immunocytochemistry (ICC), Flow Cytometry (FACS)

Product Details

Purpose:	Serotonin receptor 3A / HTR3A
Immunogen:	Peptide with sequence C-GPQDFEKSPRDR, from the internal region of the protein sequence according to NP_998786.2, NP_000860.2, NP_001155244.1.
Sequence:	GPQDFEKSPR DR
Isotype:	IgG
Specificity:	This antibody is expected to recognise all three reported isoforms
Cross-Reactivity:	Human
Purification:	Purified from goat serum by ammonium sulphate precipitation followed by antigen affinity chromatography using the immunizing peptide.
Grade:	Verified

Target Details

Target:	Serotonin Receptor 3A (HTR3A)
Alternative Name:	HTR3A (HTR3A Products)
Background:	HTR3A, serotonin receptor, 5-hydroxytryptamine (serotonin) receptor 3A, 5-HT-3, 5-HT3A, 5-HT3R, 5HT3R, HTR3, 5-hydroxytryptamine (serotonin) receptor-3, 5HT3 serotonin receptor, Serotonin-gated ion channel receptor, truncated receptor, containing only 3 t
Gene ID:	3359
NCBI Accession:	NP_998786 , NP_000860 , NP_001155244
Pathways:	Synaptic Membrane

Application Details

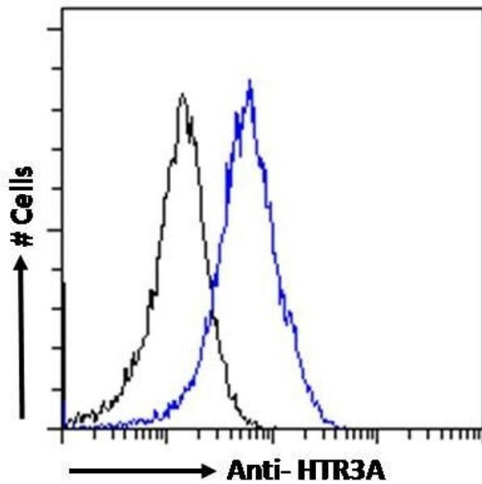
Application Notes:	Immunohistochemistry: Paraffin embedded Human Small Intestine. Recommended concentration: 3.75 µg/mL. Peptide ELISA: antibody detection limit dilution 1:128000.
Comment:	Immunocytochemistry: This product has been successfully used in ICC on Rat: Lu CL et al, Gastroenterology. 2009 Sep,137(3):1040-50. PMID: 19344720. Flow Cytometry: Flow cytometric analysis of HeLa cells. Recommended co
Restrictions:	For Research Use only

Handling

Format:	Liquid
Concentration:	0.5 mg/mL
Buffer:	Supplied at 0.5 mg/mL in Tris saline, 0.02 % sodium azide, pH 7.3 with 0.5 % bovine serum albumin.
Preservative:	Sodium azide
Precaution of Use:	This product contains Sodium azide: a POISONOUS AND HAZARDOUS SUBSTANCE which should be handled by trained staff only.
Handling Advice:	Minimize freezing and thawing.
Storage:	-20 °C
Storage Comment:	Aliquot and store at -20°C, with minimal freeze/thawing. A working aliquot may be refrigerated at 4°C for a few weeks and still remain viable.

Product cited in: Lu, Hsieh, Dun, Oprea, Wang, Luo, Lin, Chang, Lee: "Estrogen rapidly modulates 5-hydroxytryptophan-induced visceral hypersensitivity via GPR30 in rats." in: **Gastroenterology**, Vol. 137, Issue 3, pp. 1040-50, (2009) ([PubMed](#)).

Images



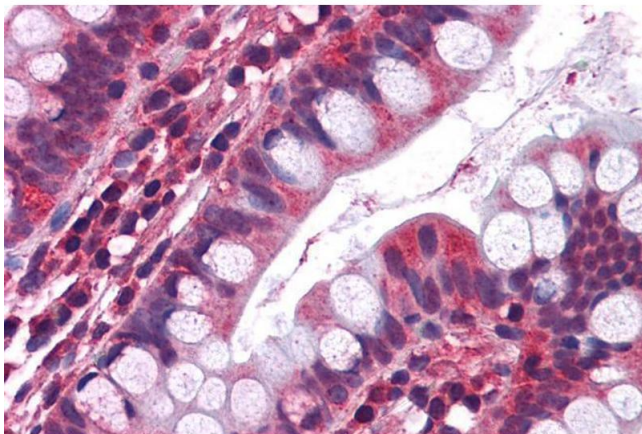
Flow Cytometry

Image 1. ABIN185673 Flow cytometric analysis of paraformaldehyde fixed HeLa cells (blue line), permeabilized with 0.5 % Triton. Primary incubation 1hr (10 µg/mL) followed by Alexa Fluor 488 secondary antibody (1 µg/mL). IgG control: Unimmunized goat IgG (black line) fol



Image 2. ABIN185673 (0.3µg/ml) staining of Human Colon lysate (35µg protein in RIPA buffer). Primary incubation was 1 hour. Detected by chemiluminescence.

Image 2. ABIN185673 (0.3µg/ml) staining of Human Colon lysate (35µg protein in RIPA buffer). Primary incubation was 1 hour. Detected by chemiluminescence.



Immunohistochemistry

Image 3. ABIN185673 (3.75µg/ml) staining of paraffin embedded Human Small Intestine. Steamed antigen retrieval with citrate buffer pH 6, AP-staining.