

Datasheet for ABIN185674
anti-WT1 antibody (N-Term)



[Go to Product page](#)

2 Images

Overview

Quantity:	100 µg
Target:	WT1
Binding Specificity:	N-Term
Reactivity:	Human
Host:	Goat
Clonality:	Polyclonal
Conjugate:	This WT1 antibody is un-conjugated
Application:	Western Blotting (WB), ELISA

Product Details

Purpose:	Wilms tumor 1 / WT1
Immunogen:	Peptide with sequence QDPASTCVPEPASQH, from the N Terminus of the protein sequence according to NP_000369.3, NP_077742.2, NP_077743.2, NP_077744.3.
Sequence:	QDPASTCVPE PASQH
Isotype:	IgG
Specificity:	This antibody is expected to recognise all four reported isoforms (NP_000369.3, NP_077742.2, NP_077743.2, NP_077744.3).
Cross-Reactivity:	Human
Purification:	Purified from goat serum by ammonium sulphate precipitation followed by antigen affinity chromatography using the immunizing peptide.

Product Details

Grade: Verified

Target Details

Target: WT1

Alternative Name: WT1 ([WT1 Products](#))

Background: WT1, Wilms tumor 1, GUD, WAGR, WIT-2, WT33

Gene ID: 7490

NCBI Accession: [NP_000369](#), [NP_077742](#), [NP_077743](#), [NP_077744](#)

Pathways: [Tube Formation](#)

Application Details

Application Notes: Western Blot: Approx 55 kDa band observed in Human Kidney, Spleen and Testis lysates (calculated MW of 54.3 kDa according to NP_000369.3). Recommended concentration: 1-3 µg/mL.
Peptide ELISA: antibody detection limit dilution 1:32000.

Restrictions: For Research Use only

Handling

Format: Liquid

Concentration: 0.5 mg/mL

Buffer: Supplied at 0.5 mg/mL in Tris saline, 0.02 % sodium azide, pH 7.3 with 0.5 % bovine serum albumin.

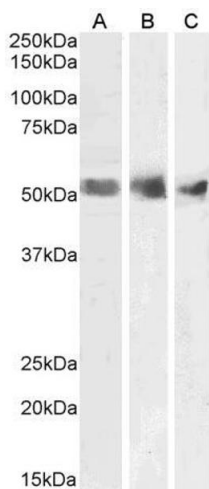
Preservative: Sodium azide

Precaution of Use: This product contains Sodium azide: a POISONOUS AND HAZARDOUS SUBSTANCE which should be handled by trained staff only.

Handling Advice: Minimize freezing and thawing.

Storage: -20 °C

Storage Comment: Aliquot and store at -20°C, with minimal freeze/thawing. A working aliquot may be refrigerated at 4°C for a few weeks and still remain viable.



Western Blotting

Image 1. ABIN185674 (1µg/ml) staining of Human Spleen (A), Kidney (B) and Testis (C) lysates (35µg protein in RIPA buffer). Primary incubation was 1 hour. Detected by chemiluminescence.



Image 2. ABIN185674 (1 ug/ml) staining of Human Spleen lysate (35 ug protein in RIPA buffer). Primary incubation was 1 hour. Detected by chemiluminescence.