



[Go to Product page](#)

Datasheet for ABIN185675
anti-VHL antibody (Internal Region)

3 Images

Overview

Quantity:	100 µg
Target:	VHL
Binding Specificity:	Internal Region
Reactivity:	Human, Mouse, Rat
Host:	Goat
Clonality:	Polyclonal
Conjugate:	This VHL antibody is un-conjugated
Application:	Western Blotting (WB), Immunohistochemistry (IHC), ELISA

Product Details

Purpose:	VHL
Immunogen:	Peptide with sequence C-RSLVKPENYRRRLD, from the internal region of the protein sequence according to NP_000542.1, NP_937799.1.
Sequence:	RSLVKPENYR RLD
Isotype:	IgG
Specificity:	This antibody is expected to recognise both reported isoforms (NP_000542.1 and NP_937799.1).
Cross-Reactivity:	Dog, Human, Mouse, Rat
Purification:	Purified from goat serum by ammonium sulphate precipitation followed by antigen affinity chromatography using the immunizing peptide.

Product Details

Grade: Verified

Target Details

Target: VHL

Alternative Name: VHL ([VHL Products](#))

Background: VHL, von Hippel-Lindau tumor suppressor, HRCA1, RCA1, VHL1 , elongin binding protein, von Hippel-Lindau syndrome

Gene ID: 7428, 22346, 24874

NCBI Accession: [NP_000542](#), [NP_937799](#)

Pathways: [Tube Formation](#), [Signaling Events mediated by VEGFR1 and VEGFR2](#), [Ubiquitin Proteasome Pathway](#)

Application Details

Application Notes: Immunohistochemistry: Paraffin embedded Human Kidney. Recommended concentration: 5 μ g/mL.
Western Blot: Approx 17 kDa band observed in Human Ovary and Testis lysates and also in lysates of Mouse and Rat Testis and Brain and of all human and mouse cell lines tested (calculated MW of 19.7 kDa according to NP_937799.1). Recommended concentration:
Peptide ELISA: antibody detection limit dilution 1:128000.

Restrictions: For Research Use only

Handling

Format: Liquid

Concentration: 0.5 mg/mL

Buffer: Supplied at 0.5 mg/mL in Tris saline, 0.02 % sodium azide, pH 7.3 with 0.5 % bovine serum albumin.

Preservative: Sodium azide

Precaution of Use: This product contains Sodium azide: a POISONOUS AND HAZARDOUS SUBSTANCE which should be handled by trained staff only.

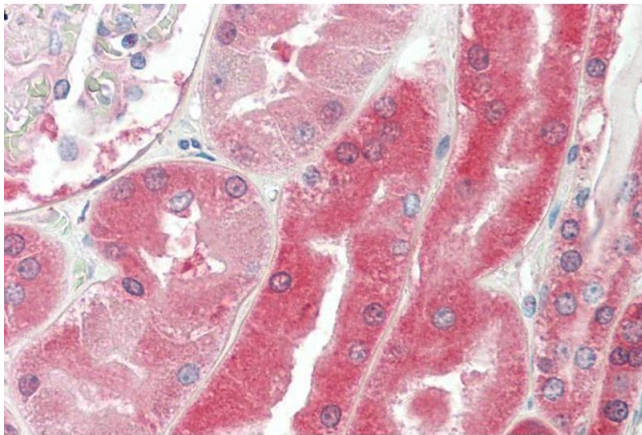
Handling Advice: Minimize freezing and thawing.

Handling

Storage: -20 °C

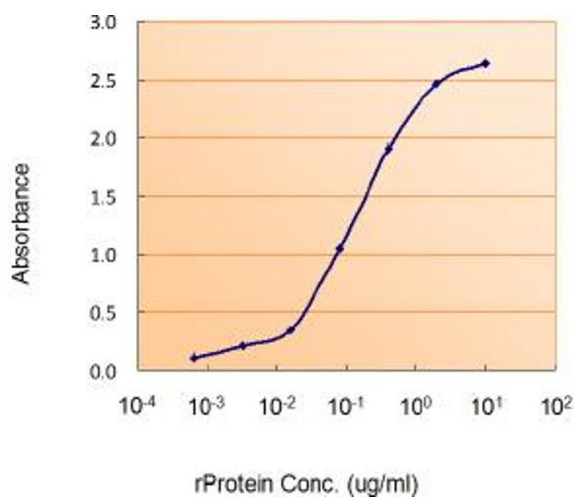
Storage Comment: Aliquot and store at -20°C, with minimal freeze/thawing. A working aliquot may be refrigerated at 4°C for a few weeks and still remain viable.

Images



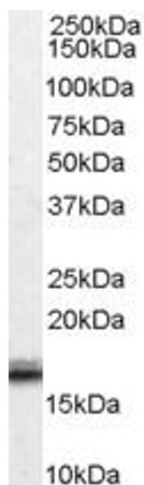
Immunohistochemistry

Image 1. ABIN185675 (5µg/ml) staining of paraffin embedded Human Kidney. Steamed antigen retrieval with citrate buffer pH 6, AP-staining.



Enzyme Immunoassay

Image 2. ABIN185675 (1.5ug/ml) as the reporter with as the capture rabbit antibody (2.5ug/ml).



Western Blotting

Image 3. ABIN185675 (0.01µg/ml) staining of Human Ovary lysate (35µg protein in RIPA buffer). Detected by chemiluminescence.