

Datasheet for ABIN185681
anti-GTF2IRD1 antibody (Internal Region)[Go to Product page](#)

4 Images

Overview

Quantity:	100 µg
Target:	GTF2IRD1
Binding Specificity:	Internal Region
Reactivity:	Human
Host:	Goat
Clonality:	Polyclonal
Conjugate:	This GTF2IRD1 antibody is un-conjugated
Application:	Western Blotting (WB), ELISA, Immunofluorescence (IF), Flow Cytometry (FACS)

Product Details

Purpose:	GTF2IRD1
Immunogen:	Peptide with sequence C-NKFTKDTTKLEPAS, from the internal region of the protein sequence according to NP_057412.1, NP_005676.2.
Sequence:	NKFTKDTTKL EPAS
Isotype:	IgG
Cross-Reactivity:	Dog, Human, Mouse, Rat
Purification:	Purified from goat serum by ammonium sulphate precipitation followed by antigen affinity chromatography using the immunizing peptide.
Grade:	Verified

Target Details

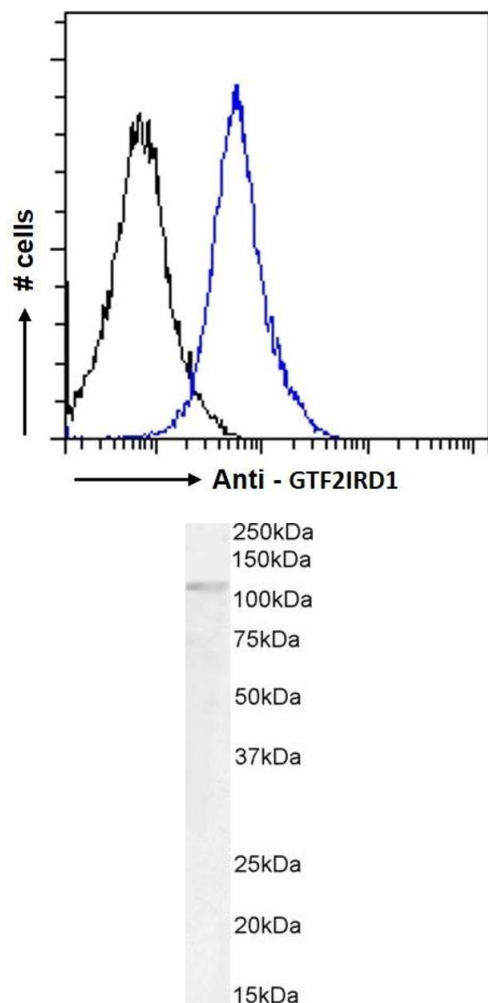
Target:	GTF2IRD1
Alternative Name:	GTF2IRD1 (GTF2IRD1 Products)
Background:	GTF2IRD1, GTF2I repeat domain containing 1 , HGNC:4661, CREAM1, GTF3, MUSTRD1, RBAP2, WBSCR11, WBSCR12, hMusTRD1alpha1 , GTF2I repeat domain-containing 1, Williams-Beuren syndrome chromosome region 11, general transcription factor 3, muscle TFII-I repeat
Gene ID:	9569, 57080, 246770
NCBI Accession:	NP_057412 , NP_005676

Application Details

Application Notes:	Western Blot: Approx 110 kDa band observed in nuclear lysates of cell line Jurkat (calculated MW of 106 kDa according to NP_057412.1). Recommended concentration: 0.5-1 µg/mL. Primary incubation 1 hour at room temperature. Peptide ELISA: antibody detection limit dilution 1:64000.
Comment:	Immunofluorescence: Strong expression of the protein seen in the nuclei and cytoplasm of A431 and U2OS cells. Recommended concentration: 10µg/ml. Flow Cytometry: Flow cytometric analysis of A431 cells. Recommended conc
Restrictions:	For Research Use only

Handling

Format:	Liquid
Concentration:	0.5 mg/mL
Buffer:	Supplied at 0.5 mg/mL in Tris saline, 0.02 % sodium azide, pH 7.3 with 0.5 % bovine serum albumin.
Preservative:	Sodium azide
Precaution of Use:	This product contains Sodium azide: a POISONOUS AND HAZARDOUS SUBSTANCE which should be handled by trained staff only.
Handling Advice:	Minimize freezing and thawing.
Storage:	-20 °C
Storage Comment:	Aliquot and store at -20°C, with minimal freeze/thawing. A working aliquot may be refrigerated at 4°C for a few weeks and still remain viable.

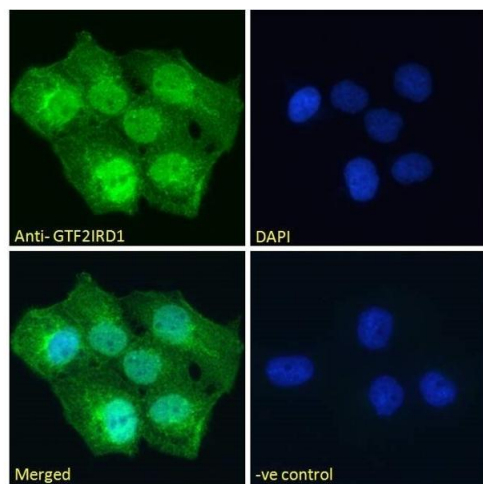


Flow Cytometry

Image 1. ABIN185681 Flow cytometric analysis of paraformaldehyde fixed A431 cells (blue line), permeabilized with 0.5 % Triton. Primary incubation 1hr (10 µg/mL) followed by Alexa Fluor 488 secondary antibody (1 µg/mL). IgG control: Unimmunized goat IgG (black line) fol

Western Blotting

Image 2. ABIN185681 (0.5 µg/mL) staining of Jurkat nuclear cell lysate (35 µg protein in RIPA buffer). Detected by chemiluminescence.



Immunofluorescence

Image 3. ABIN185681 Immunofluorescence analysis of paraformaldehyde fixed A431 cells, permeabilized with 0.15 % Triton. Primary incubation 1hr (10 µg/mL) followed by Alexa Fluor 488 secondary antibody (2 µg/mL), showing nuclear and cytoplasmic staining. The nuclear stai

Please check the [product details page](#) for more images. Overall 4 images are available for ABIN185681.