

Datasheet for ABIN185682
anti-COMT antibody (Internal Region)[Go to Product page](#)

6 Images

Overview

Quantity:	100 µg
Target:	COMT
Binding Specificity:	Internal Region
Reactivity:	Human
Host:	Goat
Clonality:	Polyclonal
Conjugate:	This COMT antibody is un-conjugated
Application:	Western Blotting (WB), ELISA, Immunohistochemistry (IHC)

Product Details

Purpose:	COMT (internal)
Immunogen:	Peptide with sequence C-QDIIPQLKKKYDVD, from the internal region of the protein sequence according to NP_000745.1, NP_009294.1.
Sequence:	QDIIPQLKKK YDVD
Isotype:	IgG
Specificity:	This antibody is expected to recognise both reported isoforms (NP_000745.1 and NP_009294.1)
Cross-Reactivity:	Human
Purification:	Purified from goat serum by ammonium sulphate precipitation followed by antigen affinity chromatography using the immunizing peptide.

Product Details

Grade: Verified

Target Details

Target: COMT

Alternative Name: COMT ([COMT Products](#))

Background: COMT, catechol-O-methyltransferase

Gene ID: 1312

NCBI Accession: [NP_000745](#), [NP_009294](#)

Pathways: [Steroid Hormone Biosynthesis](#), [SARS-CoV-2 Protein Interactome](#)

Application Details

Application Notes: Immunohistochemistry: In paraffin embedded Human Brain (Cerebellum) shows staining of processes coming from the edge of the granular zone into the molecular layer. Recommended concentration: 2-4 µg/mL. Paraffin embedded Human Testis and Small Intestine. R
Western Blot: Approx 28 kDa band in Human Testis lysates (calculated MW of 30.0 kDa according to NP_000745.1 and 24.5 kDa according to NP_009294.1). Recommended concentration: 0.03-0.1 µg/mL.
Peptide ELISA: antibody detection limit dilution 1:64000.

Restrictions: For Research Use only

Handling

Format: Liquid

Concentration: 0.5 mg/mL

Buffer: Supplied at 0.5 mg/mL in Tris saline, 0.02 % sodium azide, pH 7.3 with 0.5 % bovine serum albumin.

Preservative: Sodium azide

Precaution of Use: This product contains Sodium azide: a POISONOUS AND HAZARDOUS SUBSTANCE which should be handled by trained staff only.

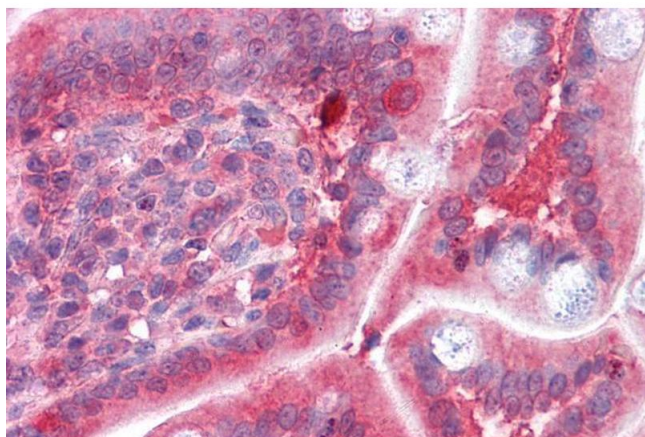
Handling Advice: Minimize freezing and thawing.

Storage: -20 °C

Handling

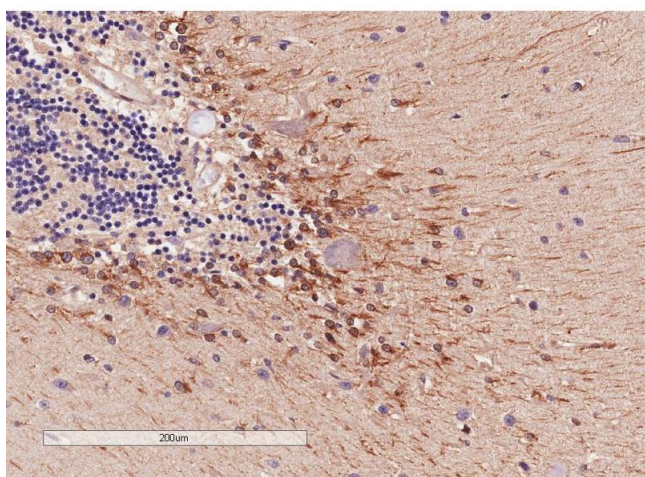
Storage Comment: Aliquot and store at -20°C , with minimal freeze/thawing. A working aliquot may be refrigerated at 4°C for a few weeks and still remain viable.

Images



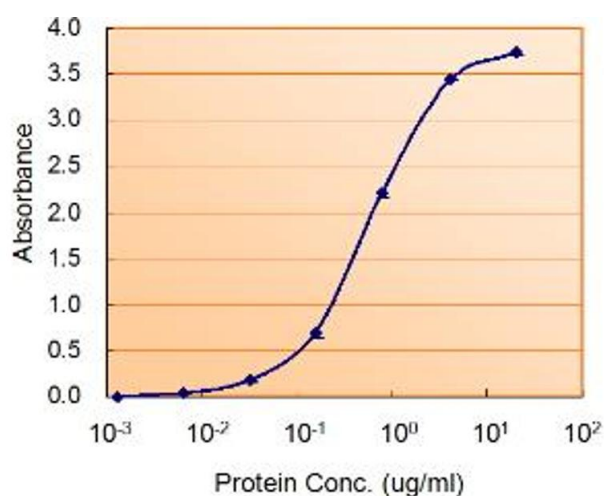
Immunohistochemistry

Image 1. ABIN185682 ($3.75\mu\text{g/ml}$) staining of paraffin embedded Human Small Intestine. Steamed antigen retrieval with citrate buffer pH 6, AP-staining.



Immunohistochemistry

Image 2. ABIN185682 ($4\mu\text{g/ml}$) staining of paraffin embedded Human Cerebellum. Microwaved antigen retrieval with Tris/EDTA buffer pH9, HRP-staining.



Enzyme Immunoassay

Image 3. ABIN185682 ($0.5\mu\text{g/ml}$) as the reporter with as the capture rabbit antibody ($2.5\mu\text{g/ml}$).

Please check the [product details page](#) for more images. Overall 6 images are available for ABIN185682.