

Datasheet for ABIN185683
anti-FXR1 antibody (Internal Region)

5 Images

[Go to Product page](#)

Overview

Quantity:	100 µg
Target:	FXR1
Binding Specificity:	Internal Region
Reactivity:	Human, Mouse
Host:	Goat
Clonality:	Polyclonal
Conjugate:	This FXR1 antibody is un-conjugated
Application:	Western Blotting (WB), ELISA, Immunofluorescence (IF), Flow Cytometry (FACS)

Product Details

Purpose:	FXR1
Immunogen:	Peptide with sequence C-RIEGDNENKLPRED, from the internal region of the protein sequence according to NP_005078.2, NP_001013456.1, NP_001013457.1.
Sequence:	RIEGDNENKL PRED
Isotype:	IgG
Specificity:	This antibody is expected to recognise all reported isoforms (NP_005078.2, NP_001013456.1 and NP_001013457.1).
Cross-Reactivity:	Cow, Dog, Human, Mouse, Rat
Purification:	Purified from goat serum by ammonium sulphate precipitation followed by antigen affinity chromatography using the immunizing peptide.

Product Details

Grade: Verified

Target Details

Target: FXR1

Alternative Name: FXR1 ([FXR1 Products](#))

Background: FXR1, fragile X mental retardation, autosomal homolog 1 , fragile X mental retardation-related protein 1

Gene ID: 8087, 14359, 361927

NCBI Accession: [NP_005078](#), [NP_001013456](#), [NP_001013457](#)

Application Details

Application Notes: Western Blot: Approx 75+80 kDa band observed in lysates of cell line NIH-3T3 (calculated MW of 59.9 kDa according to NP_001013457.1). The observed molecular weight corresponds to earlier findings in literature (Khandjian et al Hum Mol Genet. 1998 Dec,7(13)
Peptide ELISA: antibody detection limit dilution 1:128000.

Comment: **Immunofluorescence:** Strong expression of the protein seen in the cytoplasm of A431 and HeLa cells. Recommended concentration: 10µg/ml.
Flow Cytometry: Flow cytometric analysis of HeLa cells. Recommended concentration:

Restrictions: For Research Use only

Handling

Format: Liquid

Concentration: 0.5 mg/mL

Buffer: Supplied at 0.5 mg/mL in Tris saline, 0.02 % sodium azide, pH 7.3 with 0.5 % bovine serum albumin.

Preservative: Sodium azide

Precaution of Use: This product contains Sodium azide: a POISONOUS AND HAZARDOUS SUBSTANCE which should be handled by trained staff only.

Handling Advice: Minimize freezing and thawing.

Storage: -20 °C

Handling

Storage Comment: Aliquot and store at -20°C, with minimal freeze/thawing. A working aliquot may be refrigerated at 4°C for a few weeks and still remain viable.

Images

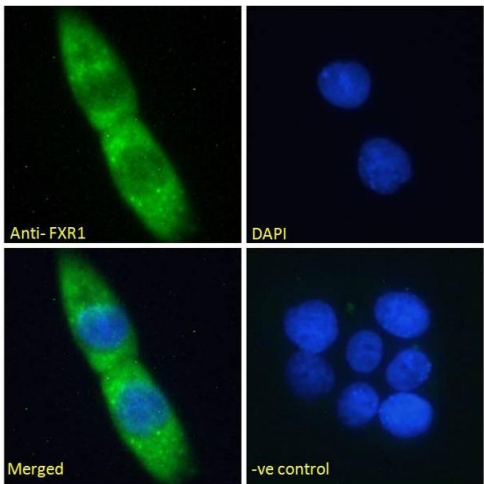


Image 1. ABIN185683 (0.2µg/ml) staining of NIH/3T3 cell lysate (35µg protein in RIPA buffer). Primary incubation was 1 hour. Detected by chemiluminescence.



Western Blotting

Image 2. ABIN185683 (1µg/ml) staining of NIH-3T3 cell lysate (35µg protein in RIPA buffer). Detected by chemiluminescence.



Immunofluorescence

Image 3. ABIN185683 Immunofluorescence analysis of paraformaldehyde fixed A431 cells, permeabilized with 0.15% Triton. Primary incubation 1hr (10ug/ml) followed by Alexa Fluor 488 secondary antibody (2ug/ml), showing cytoplasmic staining. The nuclear stain is DAPI (b

Please check the [product details page](#) for more images. Overall 5 images are available for ABIN185683.