



[Go to Product page](#)

Datasheet for ABIN185687

anti-DSCAM antibody (Internal Region)

4 Images

Overview

Quantity:	100 µg
Target:	DSCAM
Binding Specificity:	Internal Region
Reactivity:	Human
Host:	Goat
Clonality:	Polyclonal
Conjugate:	This DSCAM antibody is un-conjugated
Application:	ELISA, Western Blotting (WB), Flow Cytometry (FACS), Immunofluorescence (IF)

Product Details

Purpose:	DSCAM
Immunogen:	Peptide with sequence C-DSWDSAQRTKDVSPQ, from the internal region of the protein sequence according to NP_001380.2, NP_996770.1.
Sequence:	DSWDSAQRTK DVSPQ
Isotype:	IgG
Specificity:	This antibody is expected to recognise both reported isoforms (NP_001380.2 and NP_996770.1).
Cross-Reactivity:	Dog, Human, Mouse, Rat
Purification:	Purified from goat serum by ammonium sulphate precipitation followed by antigen affinity chromatography using the immunizing peptide.

Product Details

Grade: Verified

Target Details

Target: DSCAM

Alternative Name: DSCAM ([DSCAM Products](#))

Background: DSCAM, Down syndrome cell adhesion molecule , CHD2-42, CHD2-52 , human CHD2-52 down syndrome cell adhesion molecule

Gene ID: 1826, 13508, 171119

NCBI Accession: [NP_001380](#), [NP_001258463](#)

Pathways: [Regulation of Cell Size](#)

Application Details

Application Notes: Western Blot: Approx 200-220 kDa band observed in HepG2 cell lysates (calculated MW of 174 kDa according to NP_996770.1). This molecular weight is routinely observed by other sources. Recommended concentration: 2-3 µg/mL. Primary incubation 1 hour at room temperature. Peptide ELISA: antibody detection limit dilution 1:16000.

Comment: **Immunofluorescence:** Strong expression of the protein seen in the nuclei of MCF7 cells. Recommended concentration: 10µg/ml.
Flow Cytometry: Flow cytometric analysis of MCF7 cells. Recommended concentration: 10ug/ml.

Restrictions: For Research Use only

Handling

Format: Liquid

Concentration: 0.5 mg/mL

Buffer: Supplied at 0.5 mg/mL in Tris saline, 0.02 % sodium azide, pH 7.3 with 0.5 % bovine serum albumin.

Preservative: Sodium azide

Precaution of Use: This product contains Sodium azide: a POISONOUS AND HAZARDOUS SUBSTANCE which should be handled by trained staff only.

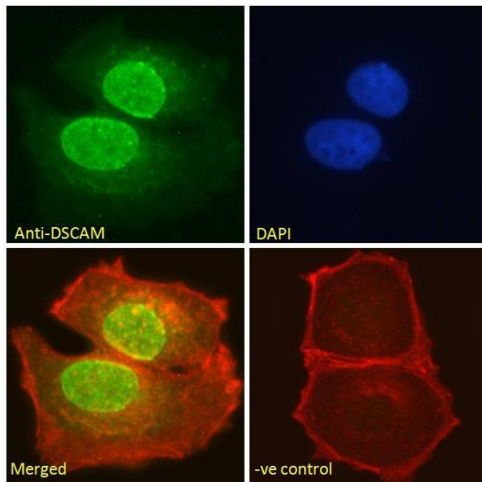
Handling

Handling Advice: Minimize freezing and thawing.

Storage: -20 °C

Storage Comment: Aliquot and store at -20°C, with minimal freeze/thawing. A working aliquot may be refrigerated at 4°C for a few weeks and still remain viable.

Images

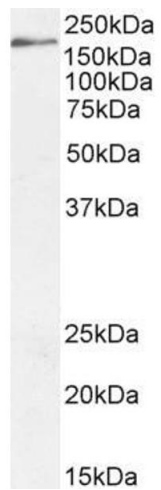


Immunofluorescence

Image 1. ABIN185687 Immunofluorescence analysis of paraformaldehyde fixed MCF7 cells, permeabilized with 0.15% Triton. Primary incubation 1hr (10ug/ml) followed by Alexa Fluor 488 secondary antibody (2ug/ml), showing nuclear staining. Actin filaments were stained with phalloidin (red) and the nuclear stain is DAPI (blue). Negative control: Unimmunized goat IgG (10ug/ml) followed by Alexa Fluor 488 secondary antibody (2ug/ml).



Image 2. ABIN185687 (1µg/ml) staining of NIH/3T3 cell lysate (35µg protein in RIPA buffer). Primary incubation was 1 hour. Detected by chemiluminescence.



Western Blotting

Image 3. ABIN185687 (2 μ g/ml) staining of HepG2 cell lysate (35 μ g protein in RIPA buffer). Detected by chemiluminescence.

Please check the [product details page](#) for more images. Overall 4 images are available for ABIN185687.