

Datasheet for ABIN185693  
**anti-TPTE antibody (Internal Region)**[Go to Product page](#)

## 2 Images

## Overview

Quantity:	100 µg
Target:	TPTE
Binding Specificity:	Internal Region
Reactivity:	Human
Host:	Goat
Clonality:	Polyclonal
Conjugate:	This TPTE antibody is un-conjugated
Application:	Western Blotting (WB), ELISA, Immunohistochemistry (IHC)

## Product Details

Purpose:	TPTE / PTEN2
Immunogen:	C-ERRTDKTHSEKFQ
Sequence:	ERRTDKTHSE KFQ
Isotype:	IgG
Specificity:	This antibody is expected to recognise all reported isoforms (NP_954870.2, NP_954868.1 and NP_954869.1). It may cross-react with the almost identical TPTE2 (GeneID 93492, NP_570141.2, NP_954864.1, NP_954863.1).
Cross-Reactivity:	Human
Purification:	Purified from goat serum by ammonium sulphate precipitation followed by antigen affinity chromatography using the immunizing peptide.

## Product Details

Grade: Verified

## Target Details

Target: TPTE

Alternative Name: TPTE ([TPTE Products](#))

Background: TPTE, PTEN2 , transmembrane phosphatase with tensin homology , tensin, putative protein-tyrosine phosphatase

Gene ID: 7179

NCBI Accession: [NP\\_954870](#), [NP\\_954868](#), [NP\\_954869](#)

Pathways: [Inositol Metabolic Process](#)

## Application Details

Application Notes: Immunohistochemistry: Paraffin embedded Human Adrenal Gland. Recommended concentration: 2.5 µg/mL.  
Western Blot: Approx 50-55 kDa band observed in Human Testis lysates (calculated MW of 60.2 kDa according to NP\_954869.1). Recommended concentration: 1-3 µg/mL.  
Peptide ELISA: antibody detection limit dilution 1:16000.

Restrictions: For Research Use only

## Handling

Format: Liquid

Concentration: 0.5 mg/mL

Buffer: Supplied at 0.5 mg/mL in Tris saline, 0.02 % sodium azide, pH 7.3 with 0.5 % bovine serum albumin.

Preservative: Sodium azide

Precaution of Use: This product contains Sodium azide: a POISONOUS AND HAZARDOUS SUBSTANCE which should be handled by trained staff only.

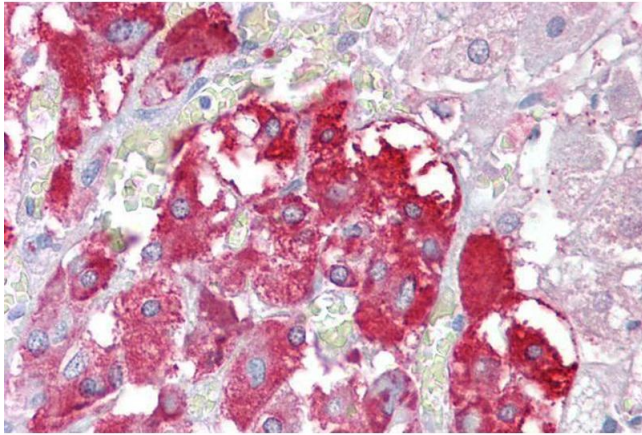
Handling Advice: Minimize freezing and thawing.

Storage: -20 °C

Storage Comment: Aliquot and store at -20°C, with minimal freeze/thawing. A working aliquot may be refrigerated

at 4°C for a few weeks and still remain viable.

## Images



### Immunohistochemistry

**Image 1.** ABIN185693 (2.5µg/ml) staining of paraffin embedded Human Adrenal Gland. Steamed antigen retrieval with citrate buffer pH 6, AP-staining.



### Western Blotting

**Image 2.** ABIN185693 (1µg/ml) staining of Human Testis lysate (35µg protein in RIPA buffer). Primary incubation was 1 hour. Detected by chemiluminescence.