



[Go to Product page](#)

Datasheet for ABIN185697
anti-TSPO antibody (C-Term)

8 Images

Overview

Quantity:	100 µg
Target:	TSPO
Binding Specificity:	C-Term
Reactivity:	Human
Host:	Goat
Clonality:	Polyclonal
Conjugate:	This TSPO antibody is un-conjugated
Application:	Western Blotting (WB), ELISA, Immunohistochemistry (IHC), Immunofluorescence (IF), Flow Cytometry (FACS)

Product Details

Purpose:	TSPO / PBR (isoform)
Immunogen:	Peptide with sequence C-RDNHGWRGGRRRLPE, from the C Terminus of the protein sequence according to NP_000705.2.
Sequence:	RDNHGWRGGR RLPE
Isotype:	IgG
Specificity:	This antibody is expected to recognise one isoform (NP_000705.2) only.
Cross-Reactivity:	Human
Purification:	Purified from goat serum by ammonium sulphate precipitation followed by antigen affinity chromatography using the immunizing peptide.

Product Details

Grade: Verified

Target Details

Target: TSPO

Alternative Name: TSPO ([TSPO Products](#))

Background: TSPO, PBR, translocator protein (18 kDa) , BZRP, DBI, IBP, MBR, PKBS, PTBR, mDRC, pk18 , OTTHUMP00000028891, benzodiazapine receptor (peripheral), benzodiazepine peripheral binding site, mitochondrial benzodiazepine receptor, peripheral benzodiazepine rece

Gene ID: 706

NCBI Accession: [NP_000705](#)

Pathways: [Cellular Response to Molecule of Bacterial Origin](#)

Application Details

Application Notes: Immunohistochemistry: In paraffin embedded Human Colon shows strong cytoplasm staining of absorptive cells. Recommended concentration: 2-4 µg/mL. Paraffin embedded Human Kidney. Recommended concentration: 5 µg/mL.

Western Blot: Approx 17 kDa band observed in Human Breast cancer lysates and approx 16 kDa in Human Ovary and Skin lysates, and in lysates of cell line A431 (calculated MW of 18.8 kDa according to NP_000705.2). These molecular weights are routinely observed

Peptide ELISA: antibody detection limit dilution 1:128000.

Comment: **Immunofluorescence:** Strong expression of the protein seen in the cytoplasm of HeLa and MCF7 cells. Recommended concentration: 10µg/ml.

Flow Cytometry: Flow cytometric analysis of HepG2 cells. Recommended concentration:

Restrictions: For Research Use only

Handling

Format: Liquid

Concentration: 0.5 mg/mL

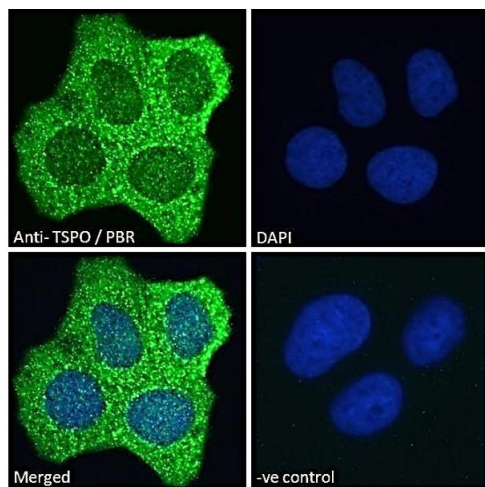
Buffer: Supplied at 0.5 mg/mL in Tris saline, 0.02 % sodium azide, pH 7.3 with 0.5 % bovine serum albumin.

Preservative: Sodium azide

Handling

Precaution of Use:	This product contains Sodium azide: a POISONOUS AND HAZARDOUS SUBSTANCE which should be handled by trained staff only.
Handling Advice:	Minimize freezing and thawing.
Storage:	-20 °C
Storage Comment:	Aliquot and store at -20°C, with minimal freeze/thawing. A working aliquot may be refrigerated at 4°C for a few weeks and still remain viable.

Images



Immunofluorescence

Image 1. ABIN185697 Immunofluorescence analysis of paraformaldehyde fixed MCF7 cells, permeabilized with 0.15 % Triton. Primary incubation 1hr (10 µg/mL) followed by Alexa Fluor 488 secondary antibody (2 µg/mL), showing cytoplasmic staining. The nuclear stain is DAPI (b

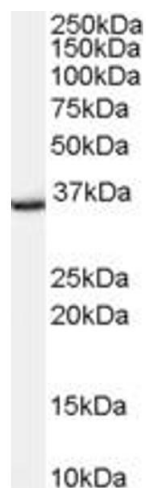
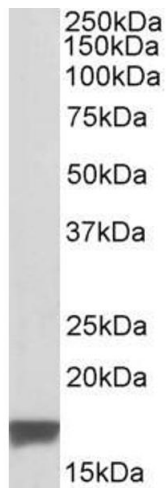


Image 2. ABIN185697 (0.1 ug/ml) staining of Human Brain lysate (35 ug protein in RIPA buffer). Primary incubation was 1 hour. Detected by chemiluminescence.



Western Blotting

Image 3. ABIN185697 (0.1µg/ml) staining of Human Breast Cancer lysate (35µg protein in RIPA buffer). Detected by chemiluminescence.

Please check the [product details page](#) for more images. Overall 8 images are available for ABIN185697.