

Datasheet for ABIN185707

**anti-Septin 1 antibody (Internal Region)**

3 Images

[Go to Product page](#)

## Overview

Quantity:	100 µg
Target:	Septin 1 (SEPT1)
Binding Specificity:	Internal Region
Reactivity:	Human
Host:	Goat
Clonality:	Polyclonal
Conjugate:	This Septin 1 antibody is un-conjugated
Application:	Western Blotting (WB), ELISA, Immunohistochemistry (IHC)

## Product Details

Purpose:	Septin 1 / SEPT1
Immunogen:	Peptide with sequence C-GARDRASRSKLSRQ, from the internal region of the protein sequence according to NP_443070.1.
Sequence:	GARDRASRSK LSRQ
Isotype:	IgG
Cross-Reactivity:	Dog, Human, Mouse, Rat
Purification:	Purified from goat serum by ammonium sulphate precipitation followed by antigen affinity chromatography using the immunizing peptide.
Grade:	Verified

## Target Details

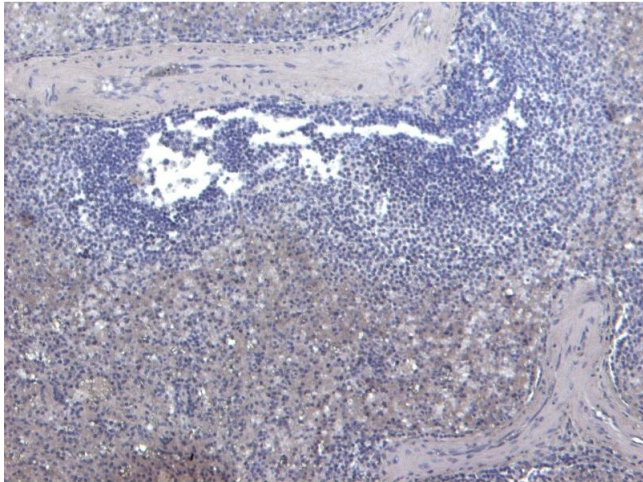
Target:	Septin 1 (SEPT1)
Alternative Name:	SEPT1 ( <a href="#">SEPT1 Products</a> )
Background:	SEPT1, septin 1 , DIFF6, LARP, MGC20394, PNUTL3, SEP1 , differentiation 6 (deoxyguanosine triphosphate triphosphohydrolase), serologically defined breast cancer antigen NY-BR-24
Gene ID:	1731, 54204, 293507
NCBI Accession:	<a href="#">NP_443070</a>

## Application Details

Application Notes:	Immunohistochemistry: Paraffin embedded Human Spleen. Recommended concentration: 6-8 µg/mL.  Western Blot: Approx 42-45 kDa band observed in lysates of cell lines HEK293 and MOLT-4 (calculated MW of 42.4 kDa according to NP_443070.6). Recommended concentration: 1-3 µg/mL. Primary incubation 1 hour. at room temperature.  Peptide ELISA: antibody detection limit dilution 1:32000.
Restrictions:	For Research Use only

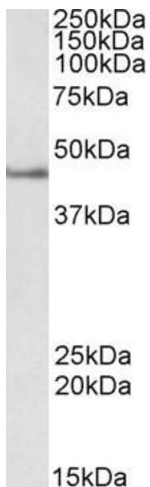
## Handling

Format:	Liquid
Concentration:	0.5 mg/mL
Buffer:	Supplied at 0.5 mg/mL in Tris saline, 0.02 % sodium azide, pH 7.3 with 0.5 % bovine serum albumin.
Preservative:	Sodium azide
Precaution of Use:	This product contains Sodium azide: a POISONOUS AND HAZARDOUS SUBSTANCE which should be handled by trained staff only.
Handling Advice:	Minimize freezing and thawing.
Storage:	-20 °C
Storage Comment:	Aliquot and store at -20°C, with minimal freeze/thawing. A working aliquot may be refrigerated at 4°C for a few weeks and still remain viable.



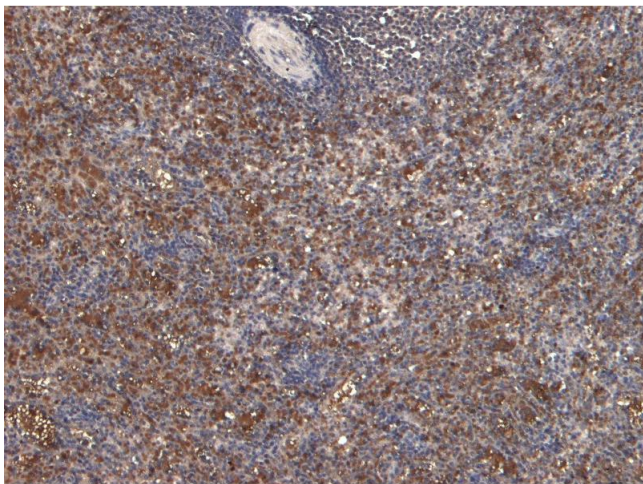
#### Immunohistochemistry

**Image 1.** (ABIN185707) Negative Control showing staining of paraffin embedded Human Spleen, with no primary antibody.



#### Western Blotting

**Image 2.** ABIN185707 (2 $\mu$ g/ml) staining of Jurkat lysate (35 $\mu$ g protein in RIPA buffer). Primary incubation was 1 hour. Detected by chemiluminescence.



#### Immunohistochemistry

**Image 3.** (ABIN185707) (6  $\mu$ g/mL) staining of paraffin embedded Human Spleen. Heat induced antigen retrieval with citrate buffer pH 6, HRP-staining.