

Datasheet for ABIN185710  
**anti-CPT1A antibody (Internal Region)**[Go to Product page](#)

## 3 Images

## Overview

Quantity:	100 µg
Target:	CPT1A
Binding Specificity:	Internal Region
Reactivity:	Human
Host:	Goat
Clonality:	Polyclonal
Conjugate:	This CPT1A antibody is un-conjugated
Application:	Western Blotting (WB), ELISA, Immunohistochemistry (IHC)

## Product Details

Purpose:	CPT1A
Immunogen:	Peptide with sequence C-DPAQTVEQRLKLFK, from the internal region of the protein sequence according to NP_001867.2, NP_001027017.1.
Sequence:	DPAQTVEQRL KLFK
Isotype:	IgG
Specificity:	This antibody is expected to recognize both reported isoforms (NP_001867.2, NP_001027017.1) but is not expected to recognise CPT1B.
Cross-Reactivity:	Human
Purification:	Purified from goat serum by ammonium sulphate precipitation followed by antigen affinity chromatography using the immunizing peptide.

## Product Details

Grade: Verified

## Target Details

Target: CPT1A

Alternative Name: CPT1A ([CPT1A Products](#))

Background: CPT1A, carnitine palmitoyltransferase 1A (liver) , CPT1, CPT1-L, L-CPT1 , carnitine palmitoyltransferase 1A, carnitine palmitoyltransferase I, carnitine palmitoyltransferase I, liver

Gene ID: 1374

NCBI Accession: [NP\\_001867](#), [NP\\_001027017](#)

Pathways: [AMPK Signaling](#), [Regulation of Lipid Metabolism by PPARalpha](#), [Feeding Behaviour](#), [Monocarboxylic Acid Catabolic Process](#)

## Application Details

Application Notes: Immunohistochemistry: Paraffin embedded Human Liver. Recommended concentration: 5-7 µg/mL.  
Western Blot: Approx 80-85 kDa band observed in lysates of cell line MCF7 (calculated MW of 86.2 kDa according to NP\_001027017.1). Recommended concentration: 1-3 µg/mL. Primary incubation 1 hour at room temperature.  
Peptide ELISA: antibody detection limit dilution 1:128000.

Restrictions: For Research Use only

## Handling

Format: Liquid

Concentration: 0.5 mg/mL

Buffer: Supplied at 0.5 mg/mL in Tris saline, 0.02 % sodium azide, pH 7.3 with 0.5 % bovine serum albumin.

Preservative: Sodium azide

Precaution of Use: This product contains Sodium azide: a POISONOUS AND HAZARDOUS SUBSTANCE which should be handled by trained staff only.

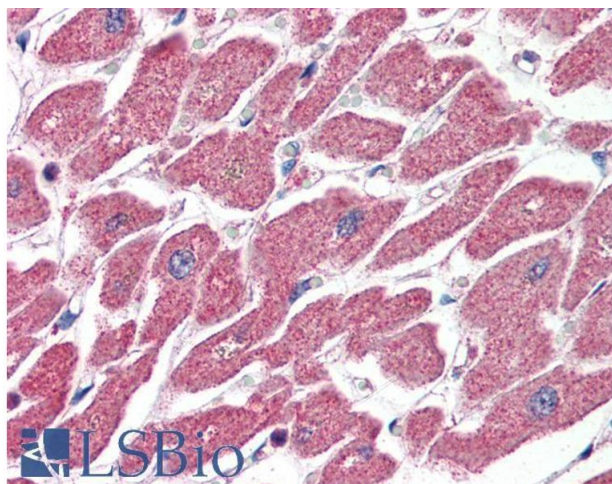
Handling Advice: Minimize freezing and thawing.

## Handling

Storage: -20 °C

Storage Comment: Aliquot and store at -20°C, with minimal freeze/thawing. A working aliquot may be refrigerated at 4°C for a few weeks and still remain viable.

## Images



### Immunohistochemistry

**Image 1.** ABIN185710 (4µg/ml) staining of paraffin embedded Human Heart. Steamed antigen retrieval with citrate buffer pH 6, AP-staining. This data is from a previous batch, not on sale.



**Image 2.** ABIN185710 (0.1µg/ml) staining of human liver lysate (35µg protein in RIPA buffer). Primary incubation was 1 hour. Detected by chemiluminescence.



### Western Blotting

**Image 3.** ABIN185710 (2µg/ml) staining of MCF7 cell lysate (35µg protein in RIPA buffer). Detected by chemiluminescence.