

Datasheet for ABIN185720
anti-TCFL5 antibody (Internal Region)[Go to Product page](#)

1 Image

Overview

Quantity:	100 µg
Target:	TCFL5
Binding Specificity:	Internal Region
Reactivity:	Human
Host:	Goat
Clonality:	Polyclonal
Conjugate:	This TCFL5 antibody is un-conjugated
Application:	Western Blotting (WB), ELISA

Product Details

Purpose:	CHA / TCFL5
Immunogen:	Peptide with sequence C-KYIQRHGD SLKKE, from the internal region of the protein sequence according to NP_006593.2.
Sequence:	KYIQRHGD SLKKE
Isotype:	IgG
Cross-Reactivity:	Dog, Human, Mouse, Rat
Purification:	Purified from goat serum by ammonium sulphate precipitation followed by antigen affinity chromatography using the immunizing peptide.
Grade:	Verified

Target Details

Target:	TCFL5
Alternative Name:	TCFL5 (TCFL5 Products)
Background:	TCFL5, CHA, transcription factor-like 5 (basic helix-loop-helix), E2BP-1, Figlb, MGC46135 , HPV-16 E2 binding protein 1, transcription factor-like 5 protein, Cha transcription factor
Gene ID:	10732, 277353
NCBI Accession:	NP_006593

Application Details

Application Notes:	Western Blot: Approx 55 kDa band observed in Human Testis lysates (calculated MW of 52.7 kDa according to NP_006593.2). Recommended concentration: 0.3-1 µg/mL. An additional band of unknown identity was also consistently observed at 28 kDa. This band was gr Peptide ELISA: antibody detection limit dilution 1:64000.
Restrictions:	For Research Use only

Handling

Format:	Liquid
Concentration:	0.5 mg/mL
Buffer:	Supplied at 0.5 mg/mL in Tris saline, 0.02 % sodium azide, pH 7.3 with 0.5 % bovine serum albumin.
Preservative:	Sodium azide
Precaution of Use:	This product contains Sodium azide: a POISONOUS AND HAZARDOUS SUBSTANCE which should be handled by trained staff only.
Handling Advice:	Minimize freezing and thawing.
Storage:	-20 °C
Storage Comment:	Aliquot and store at -20°C, with minimal freeze/thawing. A working aliquot may be refrigerated at 4°C for a few weeks and still remain viable.

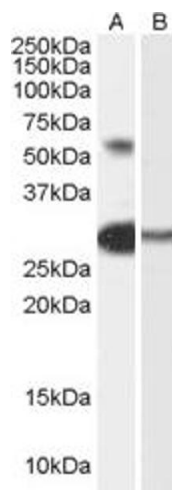


Image 1. ABIN185720 (0.3µg/ml) staining of Human Testis lysate (35µg protein in RIPA buffer) with (B) and without (A) blocking with the immunising peptide. Primary incubation was 1 hour. Detected by chemiluminescence.