

Datasheet for ABIN185722
anti-LPIN3 antibody (Internal Region)[Go to Product page](#)

1 Image

Overview

Quantity:	100 µg
Target:	LPIN3
Binding Specificity:	Internal Region
Reactivity:	Human
Host:	Goat
Clonality:	Polyclonal
Conjugate:	This LPIN3 antibody is un-conjugated
Application:	ELISA, Immunohistochemistry (IHC)

Product Details

Purpose:	Lipin 3
Immunogen:	Peptide with sequence C-KPKQKEDAVATD, from the internal region of the protein sequence according to NP_075047.1.
Sequence:	KPKQKEDAVA TD
Isotype:	IgG
Cross-Reactivity:	Human
Purification:	Purified from goat serum by ammonium sulphate precipitation followed by antigen affinity chromatography using the immunizing peptide.
Grade:	Verified

Target Details

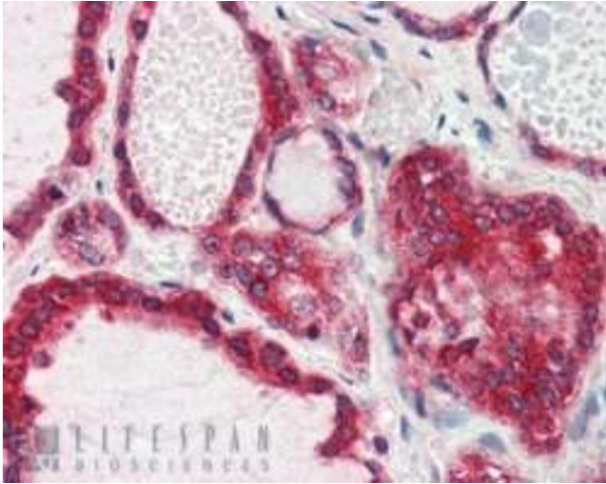
Target:	LPIN3
Alternative Name:	LPIN3 (LPIN3 Products)
Background:	LPIN3, lipin 3 , RP4-620E11.3, LIPN3L, SMP2, dJ450M14.2, dJ450M14.3, dJ620E11.2 , lipin 3-like
Gene ID:	64900
NCBI Accession:	NP_075047

Application Details

Application Notes:	<p>Immunohistochemistry: In paraffin embedded Human Thyroid Gland shows staining of cytoplasm and cell membrane of epithelial cells surrounding the follicles. Recommended concentration, 2-3 µg/mL.</p> <p>Western Blot: Preliminary experiments gave bands at approx 80 kDa and 60 kDa in Human Liver lysates after 0.1 µg/mL antibody staining. Please note that currently we cannot find an explanation in the literature for the bands we observe given the calculated s</p> <p>Peptide ELISA: antibody detection limit dilution 1:64000.</p>
Restrictions:	For Research Use only

Handling

Format:	Liquid
Concentration:	0.5 mg/mL
Buffer:	Supplied at 0.5 mg/mL in Tris saline, 0.02 % sodium azide, pH 7.3 with 0.5 % bovine serum albumin.
Preservative:	Sodium azide
Precaution of Use:	This product contains Sodium azide: a POISONOUS AND HAZARDOUS SUBSTANCE which should be handled by trained staff only.
Handling Advice:	Minimize freezing and thawing.
Storage:	-20 °C
Storage Comment:	Aliquot and store at -20°C, with minimal freeze/thawing. A working aliquot may be refrigerated at 4°C for a few weeks and still remain viable.



Immunohistochemistry

Image 1. ABIN185722 (2.5µg/ml) staining of paraffin embedded Human Thyroid Gland. Steamed antigen retrieval with citrate buffer pH 6, AP-staining.