

Datasheet for ABIN185724

**anti-ROBO1 antibody (Internal Region)**[Go to Product page](#)**2** Images

## Overview

Quantity:	100 µg
Target:	ROBO1
Binding Specificity:	Internal Region
Reactivity:	Mouse
Host:	Goat
Clonality:	Polyclonal
Conjugate:	This ROBO1 antibody is un-conjugated
Application:	Western Blotting (WB), ELISA, Immunohistochemistry (IHC)

## Product Details

Purpose:	Robo1 / DUTT1 (mouse)
Immunogen:	Peptide with sequence C-QKARPAKKQKHQ, from the internal region of the protein sequence according to NP_062286.2.
Sequence:	QKARPAKKQK HQ
Isotype:	IgG
Cross-Reactivity:	Dog, Mouse, Rat
Purification:	Purified from goat serum by ammonium sulphate precipitation followed by antigen affinity chromatography using the immunizing peptide.
Grade:	Verified

## Target Details

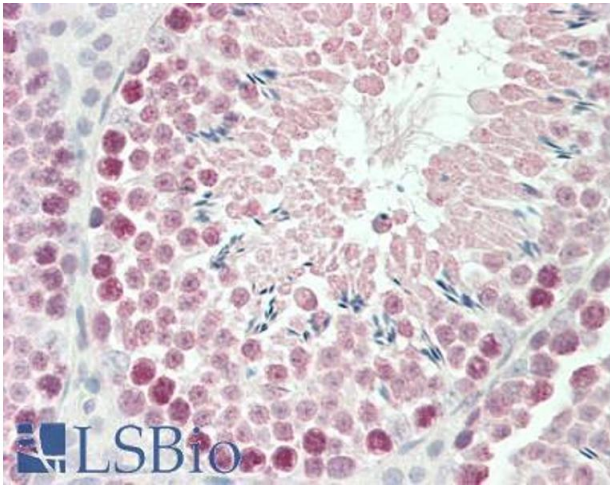
Target:	ROB01
Alternative Name:	Robo1 ( <a href="#">ROB01 Products</a> )
Background:	Robo1, roundabout homolog 1 (Drosophila) , AW494633, AW742721, DUTT1 , roundabout homolog 1
Gene ID:	19876, 58946
NCBI Accession:	<a href="#">NP_062286</a>
Pathways:	<a href="#">Positive Regulation of Endopeptidase Activity</a>

## Application Details

Application Notes:	<p>Immunohistochemistry: Paraffin embedded Mouse Testis. Recommended concentration: 5 µg/mL.</p> <p>Western Blot: Approx 200 kDa band observed in fetal Mouse Brain lysates (calculated MW of 176 kDa according to NP_062286.2). Recommended concentration: 0.05-0.2 µg/mL. Primary incubation was 1 hour.</p> <p>Peptide ELISA: antibody detection limit dilution 1:128000.</p>
Restrictions:	For Research Use only

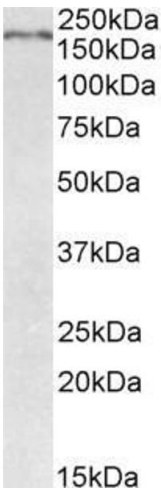
## Handling

Format:	Liquid
Concentration:	0.5 mg/mL
Buffer:	Supplied at 0.5 mg/mL in Tris saline, 0.02 % sodium azide, pH 7.3 with 0.5 % bovine serum albumin.
Preservative:	Sodium azide
Precaution of Use:	This product contains Sodium azide: a POISONOUS AND HAZARDOUS SUBSTANCE which should be handled by trained staff only.
Handling Advice:	Minimize freezing and thawing.
Storage:	-20 °C
Storage Comment:	Aliquot and store at -20°C, with minimal freeze/thawing. A working aliquot may be refrigerated at 4°C for a few weeks and still remain viable.



#### Immunohistochemistry

**Image 1.** ABIN185724 (5µg/ml) staining of paraffin embedded Mouse Testis. Steamed antigen retrieval with citrate buffer pH 6, AP-staining.



#### Western Blotting

**Image 2.** ABIN185724 (0.05µg/ml) staining of fetal Mouse Brain lysate (35µg protein in RIPA buffer). Detected by chemiluminescence.