



[Go to Product page](#)

Datasheet for ABIN185725  
**anti-PICK1 antibody (Internal Region)**

3 Images

Overview

Quantity:	100 µg
Target:	PICK1
Binding Specificity:	Internal Region
Reactivity:	Human, Mouse
Host:	Goat
Clonality:	Polyclonal
Conjugate:	This PICK1 antibody is un-conjugated
Application:	Western Blotting (WB), ELISA, Immunohistochemistry (IHC)

Product Details

Purpose:	PICK1
Immunogen:	Peptide with sequence C-HYNKLQADPKQ, from the internal region of the protein sequence according to NP_036539.1.
Sequence:	HYNKLQADPK Q
Isotype:	IgG
Specificity:	Reported variants represent identical protein (NP_036539.1, NP_001034672.1, NP_001034673.1).
Cross-Reactivity:	Cow, Dog, Human, Mouse, Pig, Rat
Purification:	Purified from goat serum by ammonium sulphate precipitation followed by antigen affinity chromatography using the immunizing peptide.

## Product Details

---

Grade: Verified

## Target Details

---

Target: PICK1

Alternative Name: PICK1 ([PICK1 Products](#))

Background: PICK1, protein interacting with PRKCA 1, MGC15204, PRKCABP , OTTHUMP00000028509, PRKCA-binding protein, protein interacting with C kinase 1, protein kinase C, alpha binding protein

Gene ID: 9463, 18693, 84591

NCBI Accession: [NP\\_036539](#)

## Application Details

---

Application Notes: Immunohistochemistry: Paraffin embedded Human Colon and Prostate. Recommended concentration: 5 µg/mL.  
Western Blot: Approx 50 kDa band observed in Mouse Brain lysates (calculated MW of 46.6 kDa according to NP\_036539.1, NP\_001034672.1 and NP\_001034673.1). Recommended concentration: 1-3 µg/mL. Primary incubation was 1 hour.  
Peptide ELISA: antibody detection limit dilution 1:16000.

Restrictions: For Research Use only

## Handling

---

Format: Liquid

Concentration: 0.5 mg/mL

Buffer: Supplied at 0.5 mg/mL in Tris saline, 0.02 % sodium azide, pH 7.3 with 0.5 % bovine serum albumin.

Preservative: Sodium azide

Precaution of Use: This product contains Sodium azide: a POISONOUS AND HAZARDOUS SUBSTANCE which should be handled by trained staff only.

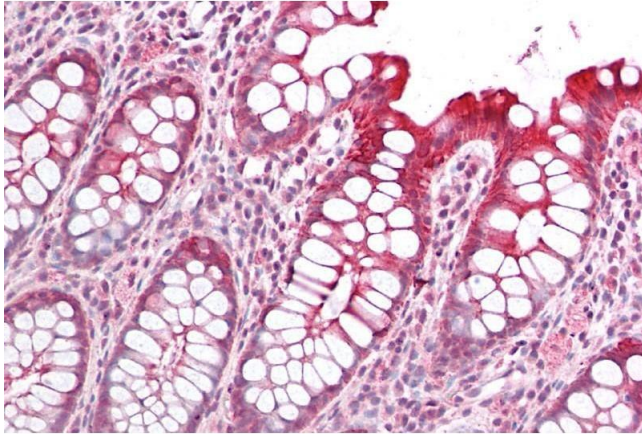
Handling Advice: Minimize freezing and thawing.

Storage: -20 °C

## Handling

Storage Comment: Aliquot and store at -20°C, with minimal freeze/thawing. A working aliquot may be refrigerated at 4°C for a few weeks and still remain viable.

## Images



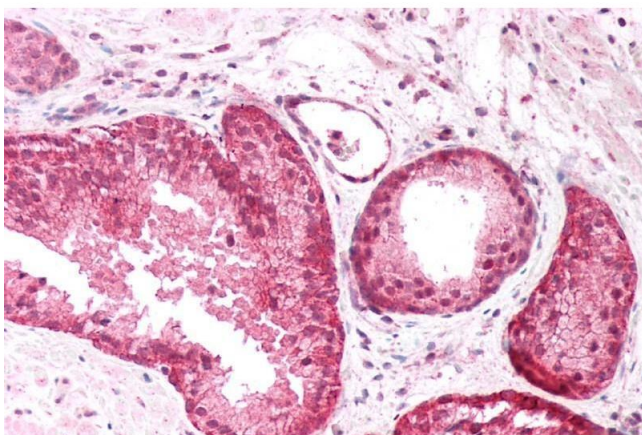
### Immunohistochemistry

**Image 1.** ABIN185725 (5µg/ml) staining of paraffin embedded Human Colon. Steamed antigen retrieval with citrate buffer pH 6, AP-staining.



### Western Blotting

**Image 2.** ABIN185725 (1µg/ml) staining of Mouse Brain lysate (35µg protein in RIPA buffer). Detected by chemiluminescence.



### Immunohistochemistry

**Image 3.** ABIN185725 (5µg/ml) staining of paraffin embedded Human Prostate. Steamed antigen retrieval with citrate buffer pH 6, AP-staining.