

Datasheet for ABIN185730  
**anti-GFAP antibody (C-Term)**

22 Images

[Go to Product page](#)

## Overview

Quantity:	100 µg
Target:	GFAP
Binding Specificity:	C-Term
Reactivity:	Human, Rat, Mouse
Host:	Goat
Clonality:	Polyclonal
Conjugate:	This GFAP antibody is un-conjugated
Application:	Western Blotting (WB), ELISA

## Product Details

Purpose:	GFAP
Immunogen:	Peptide with sequence C-DGEVIKESKQEHKD, from the C Terminus of the protein sequence according to NP_002046.1.
Sequence:	DGEVIKESKQ EHKD
Isotype:	IgG
Specificity:	GFAP is thought to help to maintain astrocyte mechanical strength, as well as the shape of cells but its exact function remains poorly understood, despite the number of studies using it as a cell marker.
Cross-Reactivity:	Dog, Human, Mouse, Rat
Purification:	Purified from goat serum by ammonium sulphate precipitation followed by antigen affinity

## Product Details

chromatography using the immunizing peptide.

Grade: Verified

## Target Details

Target: GFAP

Alternative Name: GFAP ([GFAP Products](#))

Background: GFAP, glial fibrillary acidic protein , FLJ45472 , intermediate filament protein

Gene ID: 2670, 14580, 24387

NCBI Accession: [NP\\_002046](#)

## Application Details

Application Notes: Western Blot: Approx 48 kDa band observed in Human Cerebellum and in Mouse Brain lysates and approx.. 50 kDa in Rat Brain lysates ,(calculated MW of 49.9 kDa according to, Human NP\_002046.1, Mouse NP\_034407.2 and Rat NP\_058705.2). Recommended concentration: Peptide ELISA: antibody detection limit dilution 1:128000.

Restrictions: For Research Use only

## Handling

Format: Liquid

Concentration: 0.5 mg/mL

Buffer: Supplied at 0.5 mg/mL in Tris saline, 0.02 % sodium azide, pH 7.3 with 0.5 % bovine serum albumin.

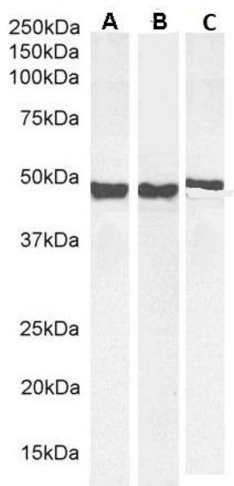
Preservative: Sodium azide

Precaution of Use: This product contains Sodium azide: a POISONOUS AND HAZARDOUS SUBSTANCE which should be handled by trained staff only.

Handling Advice: Minimize freezing and thawing.

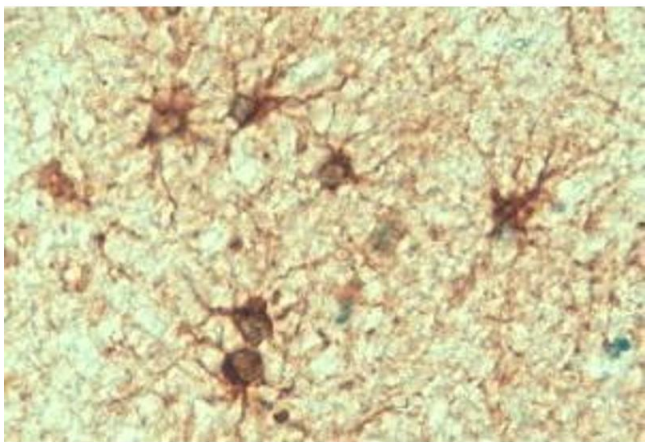
Storage: -20 °C

Storage Comment: Aliquot and store at -20°C, with minimal freeze/thawing. A working aliquot may be refrigerated at 4°C for a few weeks and still remain viable.

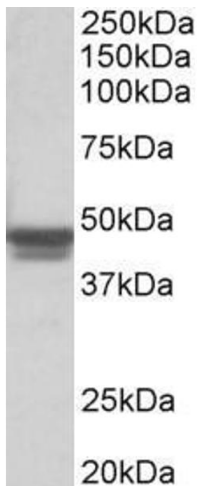


#### Western Blotting

**Image 1.** (ABIN185730) (0.01 µg/mL) staining of Human Cerebellum (A), Mouse Brain (B) and (0.003 µg/mL) Rat Brain (C) lysate (35 µg protein in RIPA buffer). Detected by chemiluminescence.



**Image 2.** ABIN185730 (2 µg/mL) staining of paraffin embedded Human Cerebellum. Steamed antigen retrieval with citrate buffer pH 6, HRP-staining.



**Image 3.** ABIN185730 (0.3 µg/mL) staining of Mouse Brain lysate (35 µg protein in RIPA buffer). Primary incubation was 1 hour. Detected by chemiluminescence.

Please check the [product details page](#) for more images. Overall 22 images are available for ABIN185730.