

Datasheet for ABIN185731
anti-CYP26B1 antibody (Internal Region)

5 Images

[Go to Product page](#)

Overview

Quantity:	100 µg
Target:	CYP26B1
Binding Specificity:	Internal Region
Reactivity:	Human
Host:	Goat
Clonality:	Polyclonal
Conjugate:	This CYP26B1 antibody is un-conjugated
Application:	ELISA, Immunohistochemistry (IHC), Flow Cytometry (FACS)

Product Details

Purpose:	CYP26B1
Immunogen:	C-SQARSEDKDGRFH
Sequence:	SQARSEDKDG RFH
Isotype:	IgG
Cross-Reactivity:	Dog, Human, Mouse, Rat
Purification:	Purified from goat serum by ammonium sulphate precipitation followed by antigen affinity chromatography using the immunizing peptide.
Grade:	Verified

Target Details

Target:	CYP26B1
Alternative Name:	CYP26B1 (CYP26B1 Products)
Background:	CYP26B1, cytochrome P450, family 26, subfamily B, polypeptide 1, CYP26A2, DKFZp686G0638, MGC129613, P450RAI-2 , cytochrome P450 retinoid metabolizing protein, cytochrome P450, family 26, subfamily b, polypeptide 1, retinoic acid-metabolizing cytochrome
Gene ID:	56603, 232174, 312495
NCBI Accession:	NP_063938 , NP_001264671
Pathways:	Retinoic Acid Receptor Signaling Pathway , Regulation of Muscle Cell Differentiation , Monocarboxylic Acid Catabolic Process

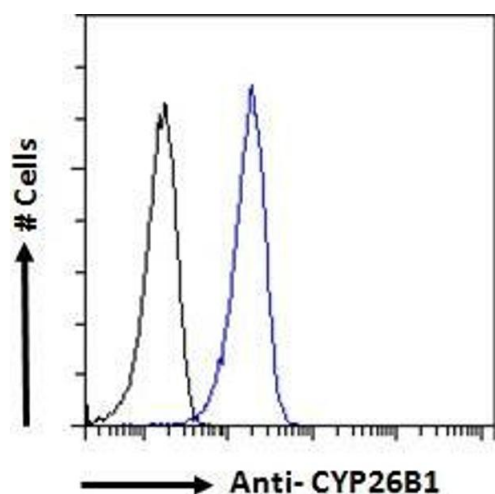
Application Details

Application Notes:	Immunohistochemistry: In paraffin embedded Human Cerebellum shows staining of cell bodies in the Molecular Layer. Recommended concentration: 4-6 µg/mL. Paraffin embedded Human Small Intestine, Spleen and Testis. Recommended concentration: 3.75 µg/mL. Peptide ELISA: antibody detection limit dilution 1:128000.
Comment:	Flow Cytometry: Flow cytometric analysis of A431 cells. Recommended concentration: 10ug/ml.
Restrictions:	For Research Use only

Handling

Format:	Liquid
Concentration:	0.5 mg/mL
Buffer:	Supplied at 0.5 mg/mL in Tris saline, 0.02 % sodium azide, pH 7.3 with 0.5 % bovine serum albumin.
Preservative:	Sodium azide
Precaution of Use:	This product contains Sodium azide: a POISONOUS AND HAZARDOUS SUBSTANCE which should be handled by trained staff only.
Handling Advice:	Minimize freezing and thawing.
Storage:	-20 °C
Storage Comment:	Aliquot and store at -20°C, with minimal freeze/thawing. A working aliquot may be refrigerated

at 4°C for a few weeks and still remain viable.



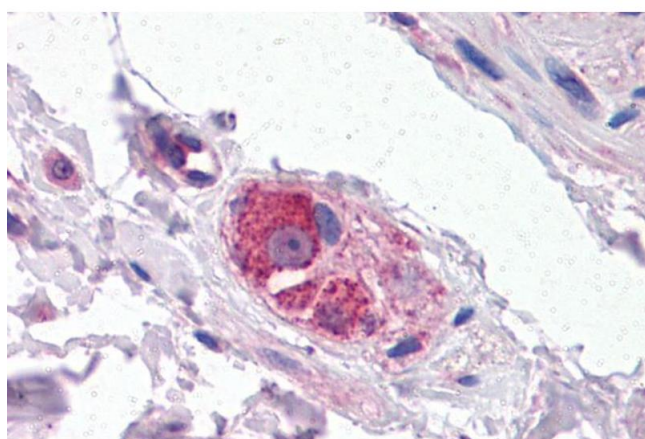
Flow Cytometry

Image 1. ABIN185731 Flow cytometric analysis of paraformaldehyde fixed A431 cells (blue line), permeabilized with 0.5% Triton. Primary incubation 1hr (10ug/ml) followed by Alexa Fluor 488 secondary antibody (1ug/ml). IgG control: Unimmunized goat IgG (black line) followed by Alexa Fluor 488 secondary antibody.



Immunohistochemistry

Image 2. ABIN185731 (4µg/ml) staining of paraffin embedded Human Cerebellum. Steamed antigen retrieval with Tris/EDTA buffer pH 9, HRP-staining.



Immunohistochemistry

Image 3. ABIN185731 (3.75µg/ml) staining of paraffin embedded Human Small Intestine. Steamed antigen retrieval with citrate buffer pH 6, AP-staining.

Please check the [product details page](#) for more images. Overall 5 images are available for ABIN185731.