



[Go to Product page](#)

Datasheet for ABIN185733
anti-CCM2 antibody (Internal Region)

5 Images

Overview

Quantity:	100 µg
Target:	CCM2
Binding Specificity:	Internal Region
Reactivity:	Human, Rat
Host:	Goat
Clonality:	Polyclonal
Conjugate:	This CCM2 antibody is un-conjugated
Application:	Western Blotting (WB), Immunofluorescence (IF), ELISA, Flow Cytometry (FACS)

Product Details

Purpose:	CCM2
Immunogen:	Peptide with sequence C-KGEKSRDKKAHEK, from the internal region of the protein sequence according to NP_001025006.1, NP_113631.1, NP_001161407.1.
Sequence:	KGEKSRDKKA HEK
Isotype:	IgG
Cross-Reactivity:	Cow, Dog, Human, Mouse, Rat
Purification:	Purified from goat serum by ammonium sulphate precipitation followed by antigen affinity chromatography using the immunizing peptide.
Grade:	Verified

Target Details

Target:	CCM2
Alternative Name:	CCM2 (CCM2 Products)
Background:	CCM2, cerebral cavernous malformation 2 , C7orf22, MGC4067, MGC4607, MGC74868, PP10187
Gene ID:	83605, 216527
NCBI Accession:	NP_001025006 , NP_113631 , NP_001161407
Pathways:	Cell-Cell Junction Organization

Application Details

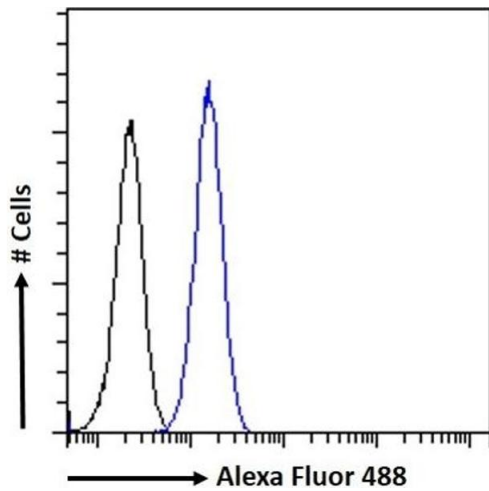
Application Notes:	Western Blot: Approx 45-48 kDa band observed in Human Heart lysates and approx.48 kDa in Human Cerebral Cortex lysates and in lysates of cell line KNRK (calculated MW of 48.8 kDa according to Human NP_113631.1 and 49.8 kDa according to Rat NP_001119747.1). Peptide ELISA: antibody detection limit dilution 1:128000.
Comment:	Immunofluorescence: Strong expression of the protein seen in the cytoplasm of U2OS cells. Recommended concentration: 10µg/ml. Flow Cytometry: Flow cytometric analysis of KNRK cells. Recommended concentration: 10ug/ml.<
Restrictions:	For Research Use only

Handling

Format:	Liquid
Concentration:	0.5 mg/mL
Buffer:	Supplied at 0.5 mg/mL in Tris saline, 0.02 % sodium azide, pH 7.3 with 0.5 % bovine serum albumin.
Preservative:	Sodium azide
Precaution of Use:	This product contains Sodium azide: a POISONOUS AND HAZARDOUS SUBSTANCE which should be handled by trained staff only.
Handling Advice:	Minimize freezing and thawing.
Storage:	-20 °C
Storage Comment:	Aliquot and store at -20°C, with minimal freeze/thawing. A working aliquot may be refrigerated

at 4°C for a few weeks and still remain viable.

Images

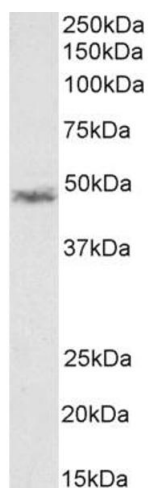


Flow Cytometry

Image 1. (ABIN185733) Flow cytometric analysis of paraformaldehyde fixed KNRK cells (blue line), permeabilized with 0.5 % Triton. Primary incubation 1hr (10 µg/mL) followed by Alexa Fluor 488 secondary antibody (1 µg/mL). IgG control: Unimmunized goat IgG (black line) followed by Alexa Fluor 488 secondary antibody.



Image 2. ABIN185733 (0.03µg/ml) staining of Human Heart lysate (35µg protein in RIPA buffer). Primary incubation was 1 hour. Detected by chemiluminescence.



Western Blotting

Image 3. (ABIN185733) (1 µg/mL) staining of Rat KNRK cell lysate (35 µg protein in RIPA buffer). Detected by chemiluminescence.

Please check the [product details page](#) for more images. Overall 5 images are available for ABIN185733.