

Datasheet for ABIN1858737
anti-Epiregulin antibody (AA 30-169)

3 Images

[Go to Product page](#)

Overview

Quantity:	100 µL
Target:	Epiregulin (EREG)
Binding Specificity:	AA 30-169
Reactivity:	Human
Host:	Rabbit
Clonality:	Polyclonal
Conjugate:	This Epiregulin antibody is un-conjugated
Application:	Western Blotting (WB), ELISA, Immunocytochemistry (ICC), Immunohistochemistry (Paraffin-embedded Sections) (IHC (p)), Immunohistochemistry (Frozen Sections) (IHC (fro))

Product Details

Purpose:	Polyclonal Antibody to Epiregulin (EREG)
Immunogen:	Recombinant Epiregulin (EREG)
Isotype:	IgG
Specificity:	The antibody is a rabbit polyclonal antibody raised against EREG. It has been selected for its ability to recognize EREG in immunohistochemical staining and western blotting.
Cross-Reactivity:	Mouse, Pig
Purification:	Antigen-specific affinity chromatography followed by Protein A affinity chromatography

Target Details

Target:	Epiregulin (EREG)
Alternative Name:	Epiregulin (EREG Products)
Background:	EPR, ER, Proepiregulin
Pathways:	RTK Signaling , Fc-epsilon Receptor Signaling Pathway , EGFR Signaling Pathway , Neurotrophin Signaling Pathway , Regulation of Muscle Cell Differentiation

Application Details

Application Notes:	Western blotting: 0.5-2 µg/mL Immunohistochemistry: 5-20 µg/mL Immunocytochemistry: 5-20 µg/mL Optimal working dilutions must be determined by end user.
Comment:	The thermal stability is described by the loss rate. The loss rate was determined by accelerated thermal degradation test, that is, incubate the protein at 37°C for 48h, and no obvious degradation and precipitation were observed. The loss rate is less than 5% within the expiration date under appropriate storage condition.
Restrictions:	For Research Use only

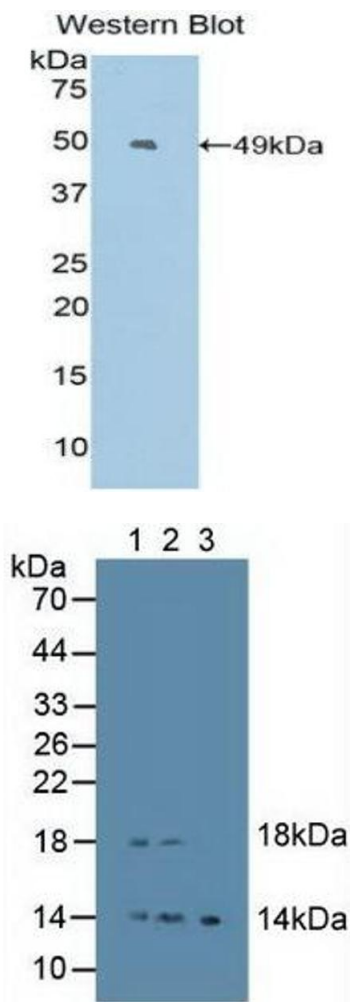
Handling

Format:	Liquid
Concentration:	Lot specific
Buffer:	PBS, pH 7.4, containing 0.02 % Sodium azide, 50 % glycerol.
Preservative:	Sodium azide
Precaution of Use:	WARNING: Reagents contain sodium azide. Sodium azide is very toxic if ingested or inhaled. Avoid contact with skin, eyes, or clothing. Wear eye or face protection when handling. If skin or eye contact occurs, wash with copious amounts of water. If ingested or inhaled, contact a physician immediately. Sodium azide yields toxic hydrazoic acid under acidic conditions. Dilute azide-containing compounds in running water before discarding to avoid accumulation of potentially explosive deposits in lead or copper plumbing.
Handling Advice:	Avoid repeated freeze-thaw cycles.
Storage:	4 °C, -20 °C
Storage Comment:	Store at 4°C for frequent use. Stored at -20°C in a manual defrost freezer for two year without

detectable loss of activity. Avoid repeated freeze-thaw cycles.

Expiry Date: 24 months

Images

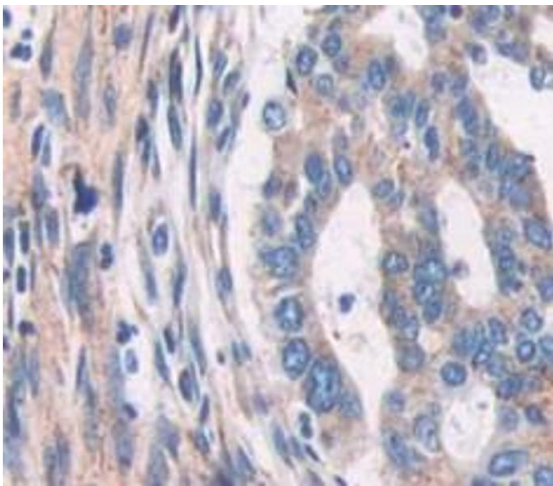


Western Blotting

Image 1.

Western Blotting

Image 2. Figure. Western Blot; Sample: Lane1: Human Placenta Tissue; Lane2: Human Lymphocytes Cells; Lane3: Mouse Lymphocytes Cells.



Immunohistochemistry

Image 3. Figure.DAB staining on IHC-P. Samples: Human Tissue