

Datasheet for ABIN1859047  
**anti-CD36 antibody (AA 187-428)**



[Go to Product page](#)

3 Images

1 Publication

## Overview

Quantity:	100 µL
Target:	CD36
Binding Specificity:	AA 187-428
Reactivity:	Human
Host:	Rabbit
Clonality:	Polyclonal
Conjugate:	This CD36 antibody is un-conjugated
Application:	Western Blotting (WB), Immunohistochemistry (IHC), Immunocytochemistry (ICC)

## Product Details

Immunogen:	GP4 (Leu187-Asn428)
Isotype:	IgG
Specificity:	The antibody is a rabbit polyclonal antibody raised against GP4. It has been selected for its ability to recognize GP4 in immunohistochemical staining and western blotting.
Purification:	Antigen-specific affinity chromatography

## Target Details

Target:	CD36
Alternative Name:	Platelet Membrane Glycoprotein IV (GP4) ( <a href="#">CD36 Products</a> )
Background:	Alternative Names: CD36, FAT, GP3B, GPIV, PASIV, SCARB3, GP88, GpIIb, Glycoprotein IIb,

## Target Details

Collagen Type I Receptor, Thrombospondin Receptor, Fatty acid translocase, Platelet collagen receptor

### Pathways:

TLR Signaling, Peptide Hormone Metabolism, Response to Growth Hormone Stimulus, Activation of Innate immune Response, Cellular Response to Molecule of Bacterial Origin, Regulation of Lipid Metabolism by PPARalpha, Positive Regulation of Immune Effector Process, Production of Molecular Mediator of Immune Response, Hepatitis C, Toll-Like Receptors Cascades, Lipid Metabolism, S100 Proteins

## Application Details

### Application Notes:

- Western blotting: 1:50-400 Immunocytochemistry in formalin fixed cells: 1:50-500 Immunohistochemistry in formalin fixed frozen section: 1:50-500 Immunohistochemistry in paraffin section: 1:10-100 Enzyme-linked Immunosorbent Assay: 1:100-1:5000 Optimal working dilutions must be determined by end user.

### Comment:

The thermal stability is described by the loss rate. The loss rate was determined by accelerated thermal degradation test, that is, incubate the protein at 37&degC for 48h, and no obvious degradation and precipitation were observed. The loss rate is less than 5% within the expiration date under appropriate storage condition.

### Restrictions:

For Research Use only

## Handling

### Format:

Liquid

### Concentration:

Lot specific

### Buffer:

PBS, pH 7.4, containing 0.02 % Sodium azide, 50 % glycerol.

### Preservative:

Sodium azide

### Precaution of Use:

WARNING: Reagents contain sodium azide. Sodium azide is very toxic if ingested or inhaled. Avoid contact with skin, eyes, or clothing. Wear eye or face protection when handling. If skin or eye contact occurs, wash with copious amounts of water. If ingested or inhaled, contact a physician immediately. Sodium azide yields toxic hydrazoic acid under acidic conditions. Dilute azide-containing compounds in running water before discarding to avoid accumulation of potentially explosive deposits in lead or copper plumbing.

### Handling Advice:

Avoid repeated freeze-thaw cycles.

### Storage:

4 °C

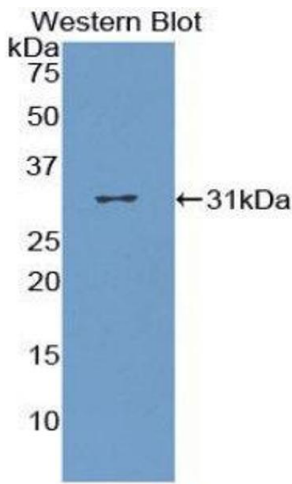
Handling

Storage Comment:	Store at 2-8 °C for one month. Aliquot and store at -80 °C for 12 months.
Expiry Date:	12 months

Publications

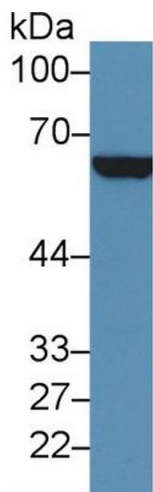
Product cited in:	Pei, Liu, Ouyang, Zhao, Liu, Wang, Wang, Ye, Wang, Song, Zhang, Dai: "Discovering novel lung cancer associated antigens and the utilization of their autoantibodies in detection of lung cancer." in: <b>Immunobiology</b> , Vol. 225, Issue 2, pp. 151891, (2020) ( <a href="#">PubMed</a> ).
-------------------	--

Images



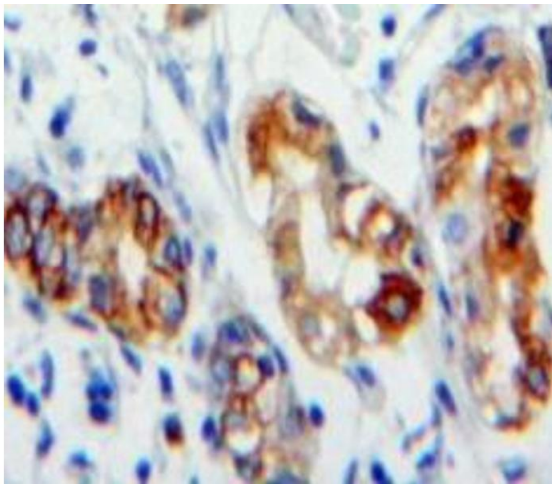
Western Blotting

Image 1.



Western Blotting

**Image 2.** Western Blot; Sample: Human Hela cell lysate; Primary Ab: 3µg/ml Rabbit Anti-Human GP4 Antibody Second Ab: 0.2µg/mL HRP-Linked Caprine Anti-Rabbit IgG Polyclonal Antibody (Catalog: SAA544Rb19)



#### Immunohistochemistry

**Image 3.** Used in DAB staining on formalin fixed paraffin-embedded Stomach tissue