



[Go to Product page](#)

Datasheet for ABIN1859405
anti-IL23 antibody (AA 22-196)

1 Image

Overview

Quantity:	100 µL
Target:	IL23
Binding Specificity:	AA 22-196
Reactivity:	Rat
Host:	Rabbit
Clonality:	Polyclonal
Conjugate:	This IL23 antibody is un-conjugated
Application:	Western Blotting (WB), ELISA, Immunohistochemistry (Paraffin-embedded Sections) (IHC (p)), Immunohistochemistry (Frozen Sections) (IHC (fro)), Immunocytochemistry (ICC)

Product Details

Immunogen:	Recombinant IL23 expressed in E.coli. The antibody is a rabbit polyclonal antibody raised against IL23.
Sequence:	MGHHHHHHSG SEF- VPRSSPDW AQCQQLSRNL CTLAWSAHTP VGQMDLLREE GEEETKSDVP RIQCGDGC DP QGLKDNSQFC LQRIRQGLVF YKHLLDSDIF TGEPSLLPDS PVDQLHTSLL GLSLLQPED HHWETQQMPR LSPSQWQRS LLRSKILRSL QAFLAIAARV FAHGAATLTE PLVPTA
Isotype:	IgG
Specificity:	It has been selected for its ability to recognize IL23 in immunohistochemical staining and Western blotting.
Purification:	Affinity Chromatography

Target Details

Target: IL23

Alternative Name: Interleukin 23 ([IL23 Products](#))

Application Details

Application Notes: Western blotting: 1:100-400
Immunocytochemistry in formalin fixed cells: 1:100-500
Immunohistochemistry in formalin fixed frozen section: 1:100-500
Immunohistochemistry in paraffin section: 1:50-200
Enzyme-linked Immunosorbent Assay: 1:100-200
Optimal working dilutions must be determined by end user.

Comment: Content: The quality control contains recombinant IL23 (Val22~Ala196) disposed in loading buffer.
Usage: 10 µL per well when 3,3'-Diaminobenzidine(DAB) as the substrate. 5 µL per well when used in enhanced chemiluminescent (ECL).
Note: The quality control is specifically manufactured as the positive control. Not used for other purposes.
Loading Buffer: 100 mM Tris(pH8.8), 2 % SDS, 200 mM NaCl, 50 % glycerol, BPB 0.01 % , NaN₃ 0.02 % .

Restrictions: For Research Use only

Handling

Format: Liquid

Concentration: Lot specific

Buffer: Supplied as solution form in PBS, pH7.4, containing 0.02 % NaN₃, 50 % glycerol.

Preservative: Sodium azide

Precaution of Use: WARNING: Reagents contain sodium azide. Sodium azide is very toxic if ingested or inhaled. Avoid contact with skin, eyes, or clothing. Wear eye or face protection when handling. If skin or eye contact occurs, wash with copious amounts of water. If ingested or inhaled, contact a physician immediately. Sodium azide yields toxic hydrazoic acid under acidic conditions. Dilute azide-containing compounds in running water before discarding to avoid accumulation of potentially explosive deposits in lead or copper plumbing.

Handling Advice: Avoid repeated freeze/thaw cycles

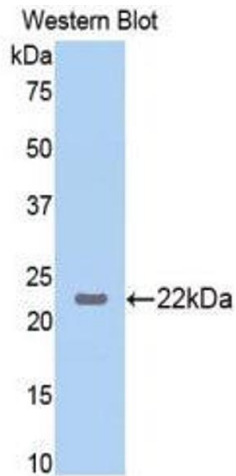
Handling

Storage: 4 °C

Storage Comment: Store at 2-8 °C for one month. Aliquot and store at -80 °C for 12 months.

Expiry Date: 12 months

Images



Western Blotting

Image 1.