

Datasheet for ABIN1860011
anti-NME6 antibody (AA 3-182)



[Go to Product page](#)

3 Images

Overview

Quantity:	100 µL
Target:	NME6
Binding Specificity:	AA 3-182
Reactivity:	Human
Host:	Rabbit
Clonality:	Polyclonal
Conjugate:	This NME6 antibody is un-conjugated
Application:	Western Blotting (WB), Immunohistochemistry (IHC), Immunocytochemistry (ICC), Immunoprecipitation (IP)

Product Details

Purpose:	Polyclonal Antibody to Non Metastatic Cells 6, Protein Expressed In (NME6)
Immunogen:	RPN537Hu01Recombinant Non Metastatic Cells 6, Protein Expressed In (NME6)
Isotype:	IgG
Specificity:	The antibody is a rabbit polyclonal antibody raised against NME6. It has been selected for its ability to recognize NME6 in immunohistochemical staining and western blotting.
Cross-Reactivity:	Pig
Purification:	Antigen-specific affinity chromatography followed by Protein A affinity chromatography

Target Details

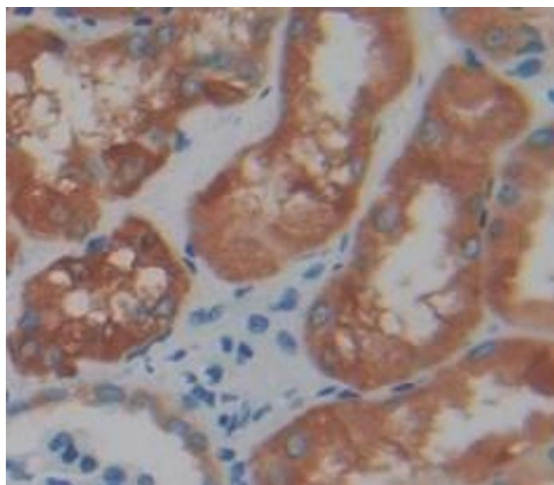
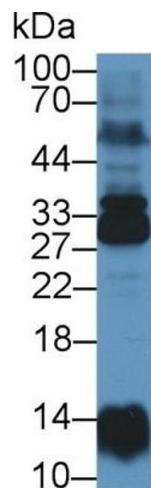
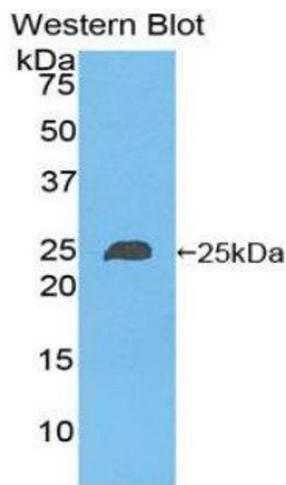
Target:	NME6
Alternative Name:	NME6 (NME6 Products)
Background:	NM23-H6, IPIA-ALPHA, Nucleoside-Diphosphate Kinase 6, Inhibitor of p53-induced apoptosis-alpha
Pathways:	Nucleotide Phosphorylation , Ribonucleoside Biosynthetic Process

Application Details

Application Notes:	Western blotting: 0.2-2 µg/mL, 1:250-2500 Immunohistochemistry: 5-20 µg/mL, 1:25-100 Immunocytochemistry: 5-20 µg/mL, 1:25-100 Optimal working dilutions must be determined by end user.
Comment:	The thermal stability is described by the loss rate. The loss rate was determined by accelerated thermal degradation test, that is, incubate the protein at 37°C for 48h, and no obvious degradation and precipitation were observed. The loss rate is less than 5% within the expiration date under appropriate storage condition.
Restrictions:	For Research Use only

Handling

Format:	Liquid
Concentration:	500 µg/mL
Buffer:	PBS, pH 7.4, containing 0.01 % SKL, 1 mM DTT, 5 % Trehalose and Proclin300.
Preservative:	Dithiothreitol (DTT), ProClin
Precaution of Use:	WARNING: Reagents contain sodium azide. Sodium azide is very toxic if ingested or inhaled. Avoid contact with skin, eyes, or clothing. Wear eye or face protection when handling. If skin or eye contact occurs, wash with copious amounts of water. If ingested or inhaled, contact a physician immediately. Sodium azide yields toxic hydrazoic acid under acidic conditions. Dilute azide-containing compounds in running water before discarding to avoid accumulation of potentially explosive deposits in lead or copper plumbing.
Handling Advice:	Avoid repeated freeze-thaw cycles.
Storage:	4 °C, -20 °C
Storage Comment:	Store at 4°C for frequent use. Stored at -20°C in a manual defrost freezer for two year without detectable loss of activity. Avoid repeated freeze-thaw cycles.



Western Blotting

Image 1.

Western Blotting

Image 2. Western Blot; Sample: Human Lung lysate;
Primary Ab: 1µg/ml Rabbit Anti-Human NME6 Antibody
Second Ab: 0.2µg/mL HRP-Linked Caprine Anti-Rabbit IgG
Polyclonal Antibody (Catalog: SAA544Rb19)

Immunohistochemistry

Image 3. Figure.DAB staining on IHC-P. Samples: Human
Tissue