

Datasheet for ABIN1860047

**anti-Glucocorticoid Receptor antibody (AA 532-730)**[Go to Product page](#)

## 4 Images

## Overview

Quantity:	100 µL
Target:	Glucocorticoid Receptor (NR3C1)
Binding Specificity:	AA 532-730
Reactivity:	Human
Host:	Rabbit
Clonality:	Polyclonal
Conjugate:	This Glucocorticoid Receptor antibody is un-conjugated
Application:	Western Blotting (WB), Immunohistochemistry (IHC), Immunocytochemistry (ICC)

## Product Details

Immunogen:	NR3C1 (Leu532-Glu730)
Isotype:	IgG
Specificity:	The antibody is a rabbit polyclonal antibody raised against NR3C1. It has been selected for its ability to recognize NR3C1 in immunohistochemical staining and western blotting.
Purification:	Antigen-specific affinity chromatography

## Target Details

Target:	Glucocorticoid Receptor (NR3C1)
Alternative Name:	Nuclear Receptor Subfamily 3, Group C, Member 1 (NR3C1) ( <a href="#">NR3C1 Products</a> )
Background:	Alternative Names: GR, GCCR, GCR, GR, GRL, NR3-C1, Glucocorticoid Receptor

## Target Details

Pathways:	<a href="#">Nuclear Receptor Transcription Pathway</a> , <a href="#">Intracellular Steroid Hormone Receptor Signaling Pathway</a> , <a href="#">Steroid Hormone Mediated Signaling Pathway</a> , <a href="#">Regulation of Intracellular Steroid Hormone Receptor Signaling</a> , <a href="#">Regulation of Hormone Metabolic Process</a> , <a href="#">Regulation of Hormone Biosynthetic Process</a> , <a href="#">Regulation of Muscle Cell Differentiation</a> , <a href="#">Regulation of Carbohydrate Metabolic Process</a>
-----------	---

## Application Details

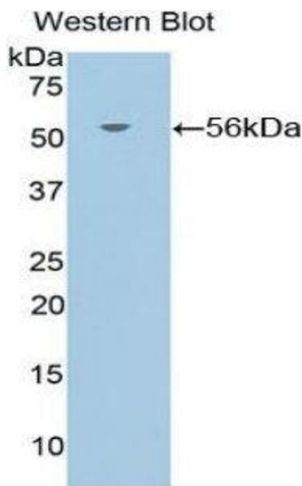
Application Notes:	<ul style="list-style-type: none"><li>Western blotting: 1:50-400 Immunocytochemistry in formalin fixed cells: 1:50-500 Immunohistochemistry in formalin fixed frozen section: 1:50-500 Immunohistochemistry in paraffin section: 1:10-100 Enzyme-linked Immunosorbent Assay: 1:100-1:5000 Optimal working dilutions must be determined by end user.</li></ul>
--------------------	---

Comment:	The thermal stability is described by the loss rate. The loss rate was determined by accelerated thermal degradation test, that is, incubate the protein at 37&degC for 48h, and no obvious degradation and precipitation were observed. The loss rate is less than 5% within the expiration date under appropriate storage condition.
----------	--

Restrictions:	For Research Use only
---------------	-----------------------

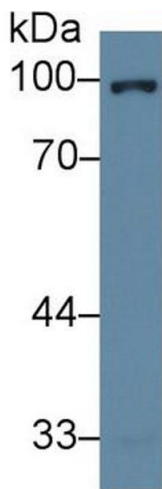
## Handling

Format:	Liquid
Concentration:	Lot specific
Buffer:	PBS, pH 7.4, containing 0.02 % Sodium azide, 50 % glycerol.
Preservative:	Sodium azide
Precaution of Use:	WARNING: Reagents contain sodium azide. Sodium azide is very toxic if ingested or inhaled. Avoid contact with skin, eyes, or clothing. Wear eye or face protection when handling. If skin or eye contact occurs, wash with copious amounts of water. If ingested or inhaled, contact a physician immediately. Sodium azide yields toxic hydrazoic acid under acidic conditions. Dilute azide-containing compounds in running water before discarding to avoid accumulation of potentially explosive deposits in lead or copper plumbing.
Handling Advice:	Avoid repeated freeze-thaw cycles.
Storage:	4 °C
Storage Comment:	Store at 2-8 °C for one month. Aliquot and store at -80 °C for 12 months.
Expiry Date:	12 months



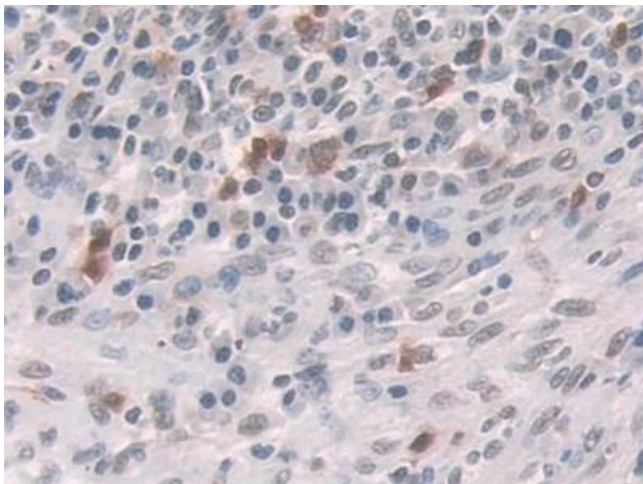
Western Blotting

Image 1.



Western Blotting

**Image 2.** Western Blot; Sample: Human Hela cell lysate; Primary Ab: 2µg/ml Rabbit Anti-Human NR3C1 Antibody Second Ab: 0.2µg/mL HRP-Linked Caprine Anti-Rabbit IgG Polyclonal Antibody (Catalog: SAA544Rb19)



Immunohistochemistry

**Image 3.** DAB staining on IHC-P; Samples: Human Colorectal cancer Tissue

Please check the [product details page](#) for more images. Overall 4 images are available for ABIN1860047.