

Datasheet for ABIN1860130
anti-F2RL1 antibody (AA 214-325)



[Go to Product page](#)

1 Image

Overview

Quantity:	200 µL
Target:	F2RL1
Binding Specificity:	AA 214-325
Reactivity:	Mouse
Host:	Rabbit
Clonality:	Monoclonal
Conjugate:	This F2RL1 antibody is un-conjugated
Application:	Western Blotting (WB), Immunohistochemistry (IHC), Immunoprecipitation (IP), Immunocytochemistry (ICC)

Product Details

Purpose:	Monoclonal Antibody to Protease Activated Receptor 2 (PAR2)
Immunogen:	Recombinant PAR2 expressed in E.coli. The antibody is a mouse monoclonal antibody raised against PAR2.
Sequence:	MGHHHHHHSG SEF- MKQTIYI PALNITTCHD VLPEEVLVGD MFNYFLSLAI GVFLFPALLT ASAYVLMIKT LRSSAMDEHS EKKRQRAIRL IITVLAMYFI CFAPSNLLLV VHYFLIKTQR QSHVY
Isotype:	IgG
Specificity:	The antibody is a mouse monoclonal antibody raised against PAR2. It has been selected for its ability to recognize PAR2 in immunohistochemical staining and western blotting.
Purification:	Antigen-specific affinity chromatography followed by Protein A affinity chromatography

Target Details

Target:	F2RL1
Alternative Name:	PAR2 (F2RL1 Products)
Background:	F2RL1, F2-RL1, GPR11, PAR2, Coagulation Factor II(thrombin)receptor-Like 1, G-protein coupled receptor 11, Thrombin receptor-like 1
Pathways:	Regulation of Leukocyte Mediated Immunity , Positive Regulation of Immune Effector Process , Production of Molecular Mediator of Immune Response , SARS-CoV-2 Protein Interactome

Application Details

Application Notes:	Western blotting: 0.2-2 µg/mL,1:500-5000 Immunohistochemistry: 5-20 µg/mL,1:50-200 Immunocytochemistry: 5-20 µg/mL,1:50-200 Optimal working dilutions must be determined by end user.
Comment:	The thermal stability is described by the loss rate. The loss rate was determined by accelerated thermal degradation test, that is, incubate the protein at 37°C for 48h, and no obvious degradation and precipitation were observed. The loss rate is less than 5% within the expiration date under appropriate storage condition.
Restrictions:	For Research Use only

Handling

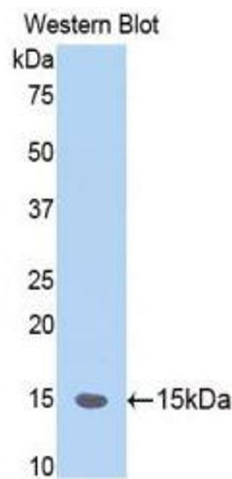
Format:	Liquid
Concentration:	1 mg/mL
Buffer:	PBS, pH 7.4, containing 0.02 % Sodium azide, 50 % glycerol.
Preservative:	Sodium azide
Precaution of Use:	WARNING: Reagents contain sodium azide. Sodium azide is very toxic if ingested or inhaled. Avoid contact with skin, eyes, or clothing. Wear eye or face protection when handling. If skin or eye contact occurs, wash with copious amounts of water. If ingested or inhaled, contact a physician immediately. Sodium azide yields toxic hydrazoic acid under acidic conditions. Dilute azide-containing compounds in running water before discarding to avoid accumulation of potentially explosive deposits in lead or copper plumbing.
Handling Advice:	Avoid repeated freeze/thaw cycles
Storage:	4 °C,-20 °C
Storage Comment:	Store at 4°C for frequent use. Stored at -20°C in a manual defrost freezer for two year without

Handling

detectable loss of activity. Avoid repeated freeze-thaw cycles.

Expiry Date: 12 months

Images



Western Blotting

Image 1.