



[Go to Product page](#)

Datasheet for ABIN1860205
anti-PHLDA2 antibody (AA 1-152)

2 Images

Overview

Quantity:	100 µL
Target:	PHLDA2
Binding Specificity:	AA 1-152
Reactivity:	Human
Host:	Rabbit
Clonality:	Polyclonal
Conjugate:	This PHLDA2 antibody is un-conjugated
Application:	Western Blotting (WB), ELISA, Immunohistochemistry (Paraffin-embedded Sections) (IHC (p)), Immunocytochemistry (ICC), Immunohistochemistry (Frozen Sections) (IHC (fro))

Product Details

Immunogen:	PHLDA2 (AA 1-152)
Sequence:	MGSSHHHHHH SSGLVPRGSH MASMTGGQQM GRGSEF- MKSPDEVLRE GELEKRSDSL FQLWKKKRGV LTSDRLSLFP ASPRRPKEL RFHSILKVDC VERTGKYVYF TIVTTDHKEI DFRCAGESCW NAAIALALID FQNRRLQDF RSRQERTAPA APAEDAVAAA AAAPSEPSEP SRPSPQPKPR TP
Isotype:	IgG
Specificity:	It has been selected for its ability to recognize PHLDA2 in immunohistochemical staining and Western blotting.
Purification:	Affinity Chromatography

Target Details

Target:	PHLDA2
Alternative Name:	Pleckstrin Homology Like Domain Family A, Member 2 (PHLDA2) (PHLDA2 Products)
Pathways:	Regulation of Carbohydrate Metabolic Process

Application Details

Application Notes:	Western blotting: 1:100-400 Immunocytochemistry in formalin fixed cells: 1:100-500 Immunohistochemistry in formalin fixed frozen section: 1:100-500 Immunohistochemistry in paraffin section: 1:50-200 Enzyme-linked Immunosorbent Assay: 1:100-200 Optimal working dilutions must be determined by end user.
Comment:	Content: The quality control contains recombinant PHLDA2 (Met1~Pro152) disposed in loading buffer. Usage: 10 µL per well when 3,3'-Diaminobenzidine(DAB) as the substrate. 5 µL per well when used in enhanced chemiluminescent (ECL). Note: The quality control is specifically manufactured as the positive control. Not used for other purposes. Loading Buffer: 100 mM Tris(pH8.8), 2 % SDS, 200 mM NaCl, 50 % glycerol, BPB 0.01 % , NaN3 0.02 % .
Restrictions:	For Research Use only

Handling

Format:	Liquid
Concentration:	Lot specific
Buffer:	Supplied as solution form in PBS, pH7.4, containing 0.02 % NaN3, 50 % glycerol.
Preservative:	Sodium azide
Precaution of Use:	WARNING: Reagents contain sodium azide. Sodium azide is very toxic if ingested or inhaled. Avoid contact with skin, eyes, or clothing. Wear eye or face protection when handling. If skin or eye contact occurs, wash with copious amounts of water. If ingested or inhaled, contact a physician immediately. Sodium azide yields toxic hydrazoic acid under acidic conditions. Dilute azide-containing compounds in running water before discarding to avoid accumulation of potentially explosive deposits in lead or copper plumbing.

Handling

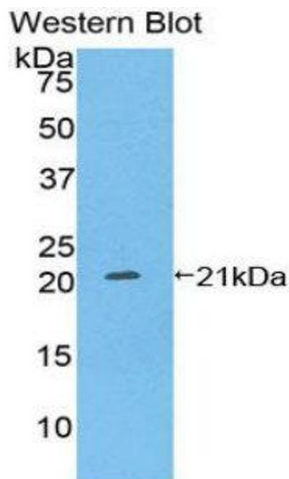
Handling Advice: Avoid repeated freeze/thaw cycles

Storage: 4 °C

Storage Comment: Store at 2-8 °C for one month. Aliquot and store at -80 °C for 12 months.

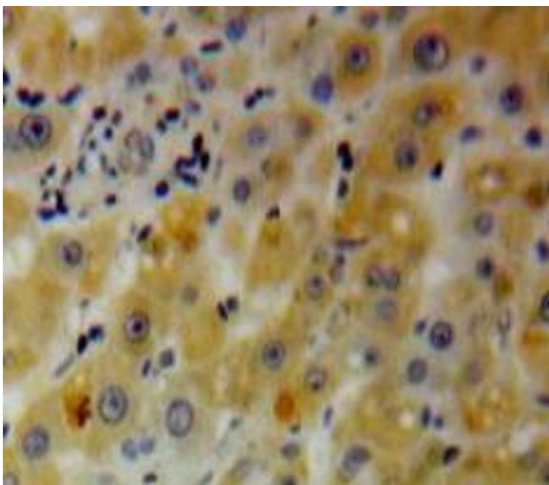
Expiry Date: 12 months

Images



Western Blotting

Image 1.



Immunohistochemistry

Image 2. Used in DAB staining on formalin fixed paraffin-embedded Liver tissue