

Datasheet for ABIN1860468
anti-RPN1 antibody (AA 308-438)[Go to Product page](#)

3 Images

Overview

Quantity:	100 µL
Target:	RPN1
Binding Specificity:	AA 308-438
Reactivity:	Human
Host:	Rabbit
Clonality:	Polyclonal
Conjugate:	This RPN1 antibody is un-conjugated
Application:	Western Blotting (WB), Immunohistochemistry (IHC), Immunocytochemistry (ICC)

Product Details

Immunogen:	RPN1 (Leu308-Glu438)
Isotype:	IgG
Specificity:	The antibody is a rabbit polyclonal antibody raised against RPN1. It has been selected for its ability to recognize RPN1 in immunohistochemical staining and western blotting.
Purification:	Antigen-specific affinity chromatography

Target Details

Target:	RPN1
Alternative Name:	Ribophorin I (RPN1) (RPN1 Products)
Background:	Alternative Names: RPN1, OST1, RBPH1, Dolichyl-Diphosphooligosaccharide-Protein

Target Details

Glycosyltransferase Subunit 1, Dolichyl-diphosphooligosaccharide protein glycosyltransferase
67 kDa subunit

Application Details

Application Notes: • Western blotting: 1:50-400 Immunocytochemistry in formalin fixed cells: 1:50-500
Immunohistochemistry in formalin fixed frozen section: 1:50-500 Immunohistochemistry in
paraffin section: 1:10-100 Enzyme-linked Immunosorbent Assay: 1:100-1:5000 Optimal
working dilutions must be determined by end user.

Comment: The thermal stability is described by the loss rate. The loss rate was determined by accelerated
thermal degradation test, that is, incubate the protein at 37°C for 48h, and no obvious
degradation and precipitation were observed. The loss rate is less than 5% within the expiration
date under appropriate storage condition.

Restrictions: For Research Use only

Handling

Format: Liquid

Concentration: Lot specific

Buffer: PBS, pH 7.4, containing 0.02 % Sodium azide, 50 % glycerol.

Preservative: Sodium azide

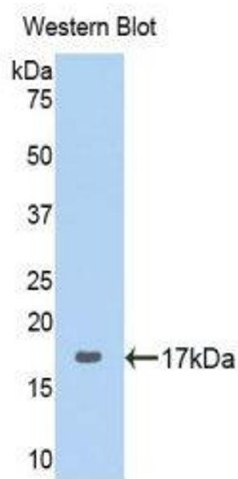
Precaution of Use: WARNING: Reagents contain sodium azide. Sodium azide is very toxic if ingested or inhaled.
Avoid contact with skin, eyes, or clothing. Wear eye or face protection when handling. If skin or
eye contact occurs, wash with copious amounts of water. If ingested or inhaled, contact a
physician immediately. Sodium azide yields toxic hydrazoic acid under acidic conditions. Dilute
azide-containing compounds in running water before discarding to avoid accumulation of
potentially explosive deposits in lead or copper plumbing.

Handling Advice: Avoid repeated freeze-thaw cycles.

Storage: 4 °C

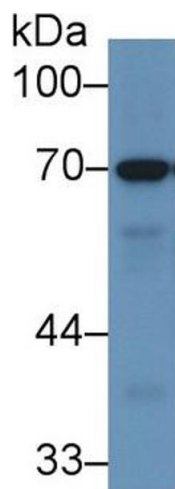
Storage Comment: Store at 2-8 °C for one month. Aliquot and store at -80 °C for 12 months.

Expiry Date: 12 months



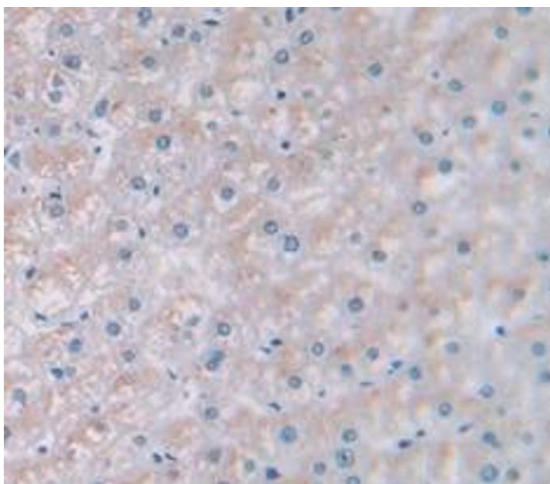
Western Blotting

Image 1.



Western Blotting

Image 2. Western Blot; Sample: Porcine Stomach lysate; Primary Ab: 1µg/ml Rabbit Anti-Human RPN1 Antibody Second Ab: 0.2µg/mL HRP-Linked Caprine Anti-Rabbit IgG Polyclonal Antibody (Catalog: SAA544Rb19)



Immunohistochemistry

Image 3. Figure.DAB staining on IHC-P. Samples: Human Tissue