

Datasheet for ABIN1860505
anti-CXCL12 antibody (AA 21-89)



[Go to Product page](#)

2 Images

Overview

Quantity:	100 µL
Target:	CXCL12
Binding Specificity:	AA 21-89
Reactivity:	Rat
Host:	Rabbit
Clonality:	Polyclonal
Conjugate:	This CXCL12 antibody is un-conjugated
Application:	Western Blotting (WB), Immunohistochemistry (IHC), Immunocytochemistry (ICC)

Product Details

Immunogen:	SDF1 (Gly21-Lys89)
Isotype:	IgG
Specificity:	The antibody is a rabbit polyclonal antibody raised against SDF1. It has been selected for its ability to recognize SDF1 in immunohistochemical staining and western blotting.
Purification:	Antigen-specific affinity chromatography

Target Details

Target:	CXCL12
Alternative Name:	Stromal Cell Derived Factor 1 (SDF1) (CXCL12 Products)
Background:	Alternative Names: CXCL12, PBSF, P-BSF, SCYB12, SDF1-A, SDF1-B, SDF1A, SDF1B, TLSF-A,

Target Details

TLSF-B, TPAR1, Pre-B Cell Growth-Stimulating Factor, Chemokine C-X-C-Motif Ligand 12

Pathways: [Regulation of Cell Size](#), [CXCR4-mediated Signaling Events](#), [Negative Regulation of intrinsic apoptotic Signaling](#)

Application Details

Application Notes:

- Western blotting: 1:50-400 Immunocytochemistry in formalin fixed cells: 1:50-500 Immunohistochemistry in formalin fixed frozen section: 1:50-500 Immunohistochemistry in paraffin section: 1:10-100 Enzyme-linked Immunosorbent Assay: 1:100-1:5000 Optimal working dilutions must be determined by end user.

Comment: The thermal stability is described by the loss rate. The loss rate was determined by accelerated thermal degradation test, that is, incubate the protein at 37°C for 48h, and no obvious degradation and precipitation were observed. The loss rate is less than 5% within the expiration date under appropriate storage condition.

Restrictions: For Research Use only

Handling

Format: Liquid

Concentration: Lot specific

Buffer: PBS, pH 7.4, containing 0.02 % Sodium azide, 50 % glycerol.

Preservative: Sodium azide

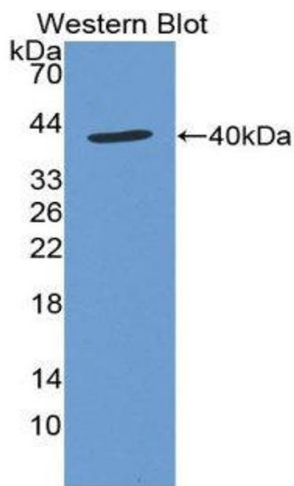
Precaution of Use: WARNING: Reagents contain sodium azide. Sodium azide is very toxic if ingested or inhaled. Avoid contact with skin, eyes, or clothing. Wear eye or face protection when handling. If skin or eye contact occurs, wash with copious amounts of water. If ingested or inhaled, contact a physician immediately. Sodium azide yields toxic hydrazoic acid under acidic conditions. Dilute azide-containing compounds in running water before discarding to avoid accumulation of potentially explosive deposits in lead or copper plumbing.

Handling Advice: Avoid repeated freeze-thaw cycles.

Storage: 4 °C

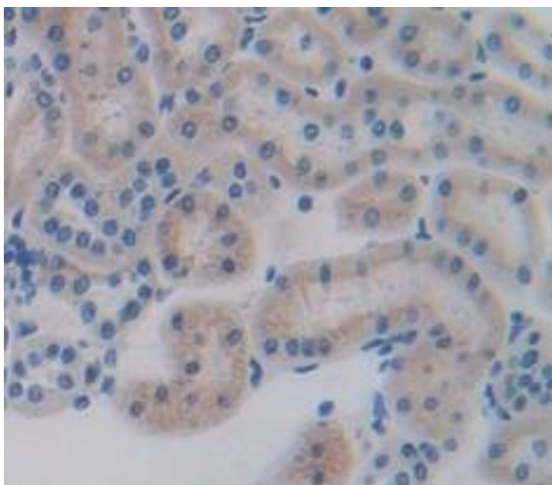
Storage Comment: Store at 2-8 °C for one month. Aliquot and store at -80 °C for 12 months.

Expiry Date: 12 months



Western Blotting

Image 1.



Immunohistochemistry

Image 2. Figure.DAB staining on IHC-P. Samples: Rat Tissue