

Datasheet for ABIN1860843
anti-PLAT antibody (AA 311-562)

6 Images

[Go to Product page](#)

Overview

Quantity:	100 µL
Target:	PLAT
Binding Specificity:	AA 311-562
Reactivity:	Human
Host:	Rabbit
Clonality:	Polyclonal
Conjugate:	This PLAT antibody is un-conjugated
Application:	Western Blotting (WB), Immunohistochemistry (IHC), Immunoprecipitation (IP), Immunocytochemistry (ICC)

Product Details

Purpose:	Polyclonal Antibody to Tissue Plasminogen Activator (tPA)
Immunogen:	Recombinant Tissue Plasminogen Activator (tPA) corresponding to N-terminal His and GST Tag
Isotype:	IgG
Specificity:	The antibody is a rabbit polyclonal antibody raised against tPA. It has been selected for its ability to recognize tPA in immunohistochemical staining and western blotting.
Cross-Reactivity:	Mouse, Rat
Purification:	Antigen-specific affinity chromatography followed by Protein A affinity chromatography

Target Details

Target:	PLAT
Alternative Name:	Tissue Plasminogen Activator (PLAT Products)
Background:	PLAT, T-PA, t-plasminogen activator, Alteplase, Reteplase
Pathways:	Autophagy , Smooth Muscle Cell Migration , Platelet-derived growth Factor Receptor Signaling , SARS-CoV-2 Protein Interactome

Application Details

Application Notes:	Western blotting: 0.5-2 µg/mL Immunocytochemistry in formalin fixed cells: 5-20 µg/mL Immunohistochemistry in formalin fixed frozen section: 5-20 µg/mL Immunohistochemistry in paraffin section: 5-20 µg/mL Enzyme-linked Immunosorbent Assay: 0.05-2 µg/mL Optimal working dilutions must be determined by end user.
Comment:	The thermal stability is described by the loss rate. The loss rate was determined by accelerated thermal degradation test, that is, incubate the protein at 37°C for 48h, and no obvious degradation and precipitation were observed. The loss rate is less than 5% within the expiration date under appropriate storage condition.
Restrictions:	For Research Use only

Handling

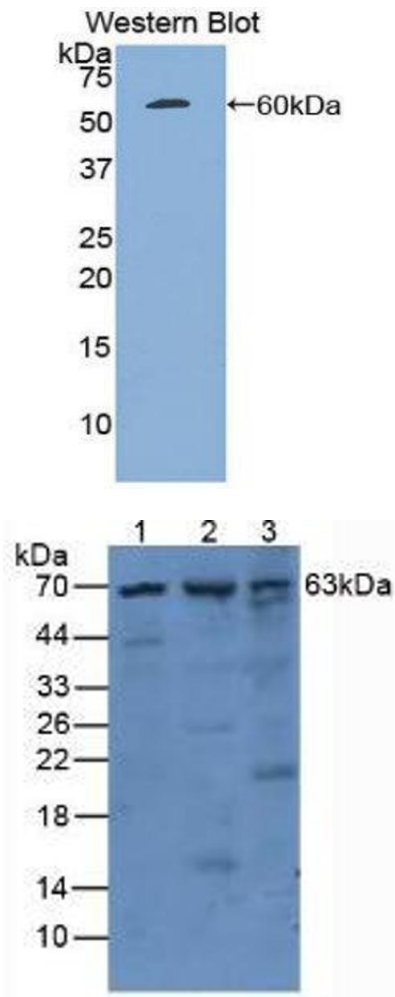
Format:	Liquid
Concentration:	Lot specific
Buffer:	PBS, pH 7.4, containing 0.02 % Sodium azide, 50 % glycerol.
Preservative:	Sodium azide
Precaution of Use:	WARNING: Reagents contain sodium azide. Sodium azide is very toxic if ingested or inhaled. Avoid contact with skin, eyes, or clothing. Wear eye or face protection when handling. If skin or eye contact occurs, wash with copious amounts of water. If ingested or inhaled, contact a physician immediately. Sodium azide yields toxic hydrazoic acid under acidic conditions. Dilute azide-containing compounds in running water before discarding to avoid accumulation of potentially explosive deposits in lead or copper plumbing.
Handling Advice:	Avoid repeated freeze-thaw cycles.
Storage:	4 °C, -20 °C
Storage Comment:	Store at 4°C for frequent use. Stored at -20°C in a manual defrost freezer for two year without

Handling

detectable loss of activity. Avoid repeated freeze-thaw cycles.

Expiry Date: 24 months

Images

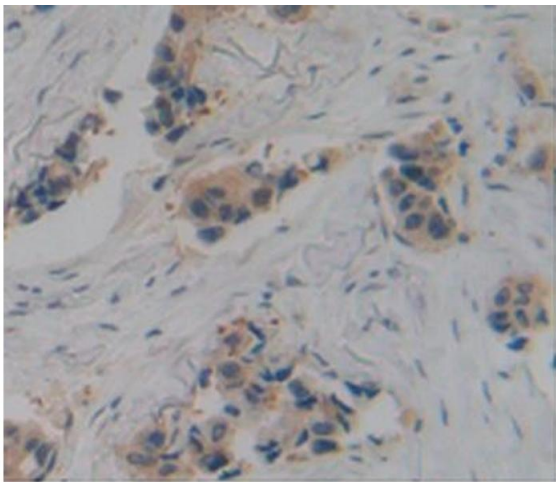


Western Blotting

Image 1.

Western Blotting

Image 2. Figure. Western Blot; Sample. Lane1: Human Mcf7 Cells; Lane2: Mouse Pancreas Tissue; Lane3: Mouse Kidney Tissue.



Immunohistochemistry

Image 3. Figure. DAB staining on IHC-P; Samples: Human Breast Cancer Tissue.

Please check the [product details page](#) for more images. Overall 6 images are available for ABIN1860843.