

Datasheet for ABIN1862264
anti-C4A antibody (AA 678-761)

3 Images

[Go to Product page](#)

Overview

Quantity:	100 µL
Target:	C4A (C4a)
Binding Specificity:	AA 678-761
Reactivity:	Mouse
Host:	Rabbit
Clonality:	Polyclonal
Conjugate:	This C4A antibody is un-conjugated
Application:	Western Blotting (WB), Immunohistochemistry (IHC), Immunoprecipitation (IP), Immunocytochemistry (ICC)

Product Details

Purpose:	Polyclonal Antibody to Complement Component 4a (C4a)
Immunogen:	Recombinant Complement Component 4a (C4a)
Isotype:	IgG
Specificity:	The antibody is a rabbit polyclonal antibody raised against C4a. It has been selected for its ability to recognize C4a in immunohistochemical staining and western blotting.
Cross-Reactivity:	Rat
Purification:	Antigen-specific affinity chromatography followed by Protein A affinity chromatography

Target Details

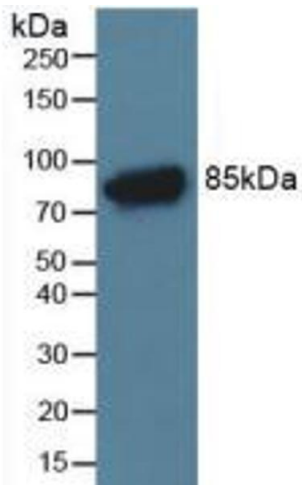
Target:	C4A (C4a)
Alternative Name:	Complement Component 4a (C4a Products)
Background:	C4a anaphylatoxin
Pathways:	Complement System

Application Details

Application Notes:	Western blotting: 0.5-3 µg/mL Immunohistochemistry: 5-30 µg/mL Immunocytochemistry: 5-30 µg/mL Optimal working dilutions must be determined by end user.
Comment:	The thermal stability is described by the loss rate. The loss rate was determined by accelerated thermal degradation test, that is, incubate the protein at 37°C for 48h, and no obvious degradation and precipitation were observed. The loss rate is less than 5% within the expiration date under appropriate storage condition.
Restrictions:	For Research Use only

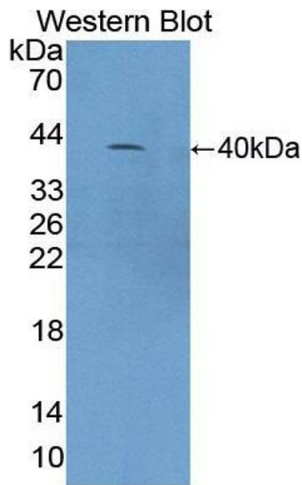
Handling

Format:	Liquid
Concentration:	Lot specific
Buffer:	PBS, pH 7.4, containing 0.02 % Sodium azide, 50 % glycerol.
Preservative:	Sodium azide
Precaution of Use:	WARNING: Reagents contain sodium azide. Sodium azide is very toxic if ingested or inhaled. Avoid contact with skin, eyes, or clothing. Wear eye or face protection when handling. If skin or eye contact occurs, wash with copious amounts of water. If ingested or inhaled, contact a physician immediately. Sodium azide yields toxic hydrazoic acid under acidic conditions. Dilute azide-containing compounds in running water before discarding to avoid accumulation of potentially explosive deposits in lead or copper plumbing.
Handling Advice:	Avoid repeated freeze-thaw cycles.
Storage:	4 °C, -20 °C
Storage Comment:	Store at 4°C for frequent use. Stored at -20°C in a manual defrost freezer for two year without detectable loss of activity. Avoid repeated freeze-thaw cycles.



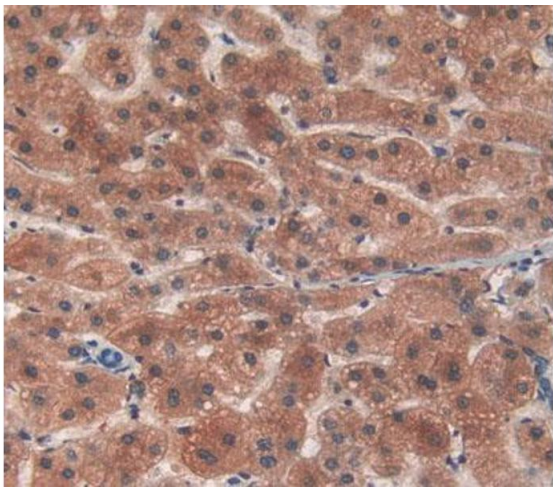
Western Blotting

Image 1. Figure. Western Blot; Rat Serum Tissue.



Western Blotting

Image 2. Figure. Western Blot; Sample: Recombinant C4a, Mouse.



Immunohistochemistry

Image 3. Figure.DAB staining on IHC-P. Samples: Mouse Tissue