

Datasheet for ABIN1862786

anti-IL-6 Receptor antibody (AA 19-10)[Go to Product page](#)**2** Images

Overview

| | |
|----------------------|---|
| Quantity: | 100 µL |
| Target: | IL-6 Receptor (IL6R) |
| Binding Specificity: | AA 19-10 |
| Reactivity: | Rat |
| Host: | Rabbit |
| Clonality: | Polyclonal |
| Conjugate: | This IL-6 Receptor antibody is un-conjugated |
| Application: | Western Blotting (WB), Immunohistochemistry (IHC), Immunoprecipitation (IP), Immunocytochemistry (ICC) |

Product Details

| | |
|---------------|--|
| Purpose: | Polyclonal Antibody to Interleukin 6 Receptor (IL6R) |
| Immunogen: | Recombinant Interleukin 6 Receptor (IL6R) |
| Isotype: | IgG |
| Specificity: | The antibody is a rabbit polyclonal antibody raised against IL6R. It has been selected for its ability to recognize IL6R in immunohistochemical staining and western blotting. |
| Purification: | Antigen-specific affinity chromatography followed by Protein A affinity chromatography |

Target Details

| | |
|---------|----------------------|
| Target: | IL-6 Receptor (IL6R) |
|---------|----------------------|

Target Details

| | |
|-------------------|--|
| Alternative Name: | Interleukin 6 Receptor (IL6R Products) |
| Background: | CD126, gp80, IL6R, IL-6R-1, IL-6R-Alpha, IL6RA, IL-6 receptor subunit alpha, Membrane glycoprotein 80 |
| Pathways: | JAK-STAT Signaling , Autophagy , Growth Factor Binding , Cancer Immune Checkpoints |

Application Details

| | |
|--------------------|---|
| Application Notes: | Western blotting: 0.5-2 µg/mL 1:230-900 Immunohistochemistry: 5-20 µg/mL 1:23-90 Immunocytochemistry: 5-20 µg/mL 1:23-90 Optimal working dilutions must be determined by end user. |
| Comment: | The thermal stability is described by the loss rate. The loss rate was determined by accelerated thermal degradation test, that is, incubate the protein at 37°C for 48h, and no obvious degradation and precipitation were observed. The loss rate is less than 5% within the expiration date under appropriate storage condition. |
| Restrictions: | For Research Use only |

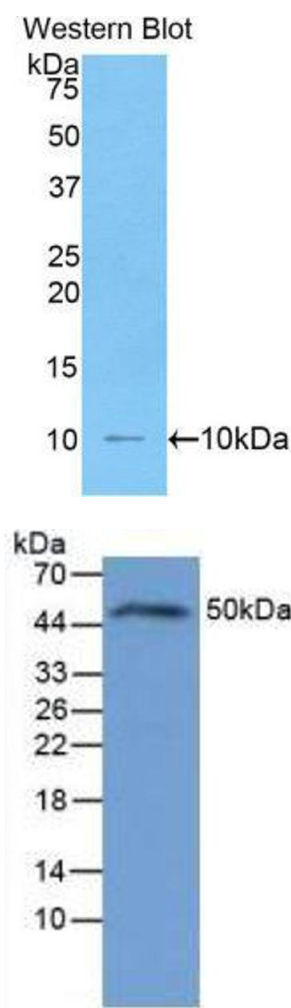
Handling

| | |
|--------------------|--|
| Format: | Liquid |
| Concentration: | Lot specific |
| Buffer: | PBS, pH 7.4, containing 0.02 % Sodium azide, 50 % glycerol. |
| Preservative: | Sodium azide |
| Precaution of Use: | WARNING: Reagents contain sodium azide. Sodium azide is very toxic if ingested or inhaled. Avoid contact with skin, eyes, or clothing. Wear eye or face protection when handling. If skin or eye contact occurs, wash with copious amounts of water. If ingested or inhaled, contact a physician immediately. Sodium azide yields toxic hydrazoic acid under acidic conditions. Dilute azide-containing compounds in running water before discarding to avoid accumulation of potentially explosive deposits in lead or copper plumbing. |
| Handling Advice: | Avoid repeated freeze-thaw cycles. |
| Storage: | 4 °C, -20 °C |
| Storage Comment: | Store at 4°C for frequent use. Stored at -20°C in a manual defrost freezer for two year without detectable loss of activity. Avoid repeated freeze-thaw cycles. |

Handling

Expiry Date: 24 months

Images



Western Blotting

Image 1.

Western Blotting

Image 2. Figure. Western Blot; Sample: Rat Liver Tissue.