

Datasheet for ABIN1863719
anti-Cholecystokinin antibody



[Go to Product page](#)

2 Images

Overview

Quantity:	200 µL
Target:	Cholecystokinin (CCK)
Reactivity:	Human
Host:	Mouse
Clonality:	Monoclonal
Conjugate:	This Cholecystokinin antibody is un-conjugated
Application:	Western Blotting (WB), ELISA, Immunocytochemistry (ICC), Immunohistochemistry (Paraffin-embedded Sections) (IHC (p)), Immunohistochemistry (Frozen Sections) (IHC (fro))

Product Details

Immunogen:	Recombinant CCK expressed in E.coli. The antibody is a mouse monoclonal antibody raised against CCK.
Sequence:	MSPILGYWKI KGLVQPTRL L LEYLEEKYEE HLYERDEGDK WRNKKFELGL EFPNLPYYID GDVKLTQSMA IIRYIADKHN MLGGCPKERA EISMLEGAVL DIRYGVSRIA YSKDFETLKV DFLSKLPEML KMFEDRLCHK TYLNGDHVTH PDFMLYDALD VVLYMDPMCL DAFPKLVCFK KRIEAIQID KYLKSSKYIA WPLQGWQATF GGGDHPPKSD GSTSGSGHHH HHSAGLVPR GSTAIGMKET AAKFERQHM DSPDLGTLEV LFQGPLGSEF - MNSGVCLCVL MAVLAAGALT QPVPADPAG SGLQRAEEAP RRQLRVSQRT DGESRAHLGA LLARYIQAR KAPSGRMSIV KNLQNLDP SH RISDRDYM GW MDFGRRSAEE YEYPS
Isotype:	IgG
Specificity:	It has been selected for its ability to recognize CCK in immunohistochemical staining and Western blotting.

Product Details

Purification: Affinity Chromatography

Target Details

Target: Cholecystokinin (CCK)

Alternative Name: Cholecystokinin ([CCK Products](#))

Pathways: [TCR Signaling](#), [Activation of Innate immune Response](#), [Cellular Response to Molecule of Bacterial Origin](#), [Positive Regulation of Immune Effector Process](#), [Positive Regulation of Endopeptidase Activity](#), [Toll-Like Receptors Cascades](#), [Feeding Behaviour](#)

Application Details

Application Notes: Western blotting: 1:100-400
Immunocytochemistry in formalin fixed cells: 1:100-500
Immunohistochemistry in formalin fixed frozen section: 1:100-500
Immunohistochemistry in paraffin section: 1:50-200
Enzyme-linked Immunosorbent Assay: 1:100-200
Optimal working dilutions must be determined by end user.

Restrictions: For Research Use only

Handling

Format: Liquid

Concentration: Lot specific

Buffer: Supplied as solution form in PBS, pH7.4, containing 0.02 % NaN₃, 50 % glycerol.

Preservative: Sodium azide

Precaution of Use: WARNING: Reagents contain sodium azide. Sodium azide is very toxic if ingested or inhaled. Avoid contact with skin, eyes, or clothing. Wear eye or face protection when handling. If skin or eye contact occurs, wash with copious amounts of water. If ingested or inhaled, contact a physician immediately. Sodium azide yields toxic hydrazoic acid under acidic conditions. Dilute azide-containing compounds in running water before discarding to avoid accumulation of potentially explosive deposits in lead or copper plumbing.

Handling Advice: Avoid repeated freeze/thaw cycles

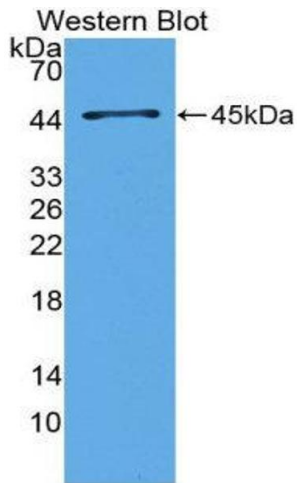
Storage: 4 °C

Handling

Storage Comment: Store at 2-8 °C for one month. Aliquot and store at -80 °C for 12 months.

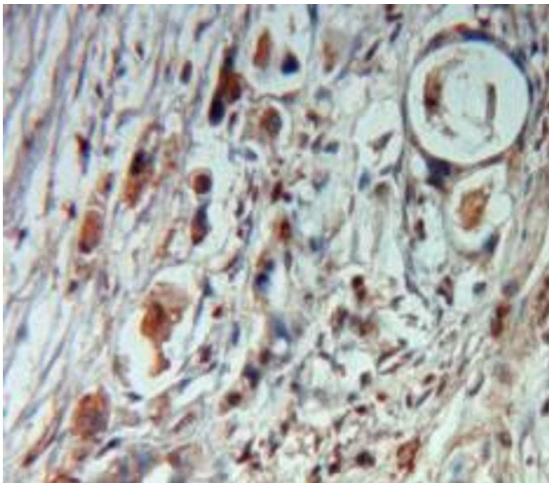
Expiry Date: 12 months

Images



Western Blotting

Image 1.



Immunohistochemistry

Image 2. Used in DAB staining on formalin fixed paraffin-embedded Pancreas tissue