

Datasheet for ABIN1866779  
**anti-Arylsulfatase A antibody (AA 21-295)**[Go to Product page](#)

## 3 Images

## Overview

Quantity:	100 µL
Target:	Arylsulfatase A (ARSA)
Binding Specificity:	AA 21-295
Reactivity:	Human
Host:	Rabbit
Clonality:	Polyclonal
Application:	Western Blotting (WB), Immunohistochemistry (IHC), Immunocytochemistry (ICC), Immunoprecipitation (IP)

## Product Details

Purpose:	Polyclonal Antibody to Arylsulfatase A (ARSA)
Immunogen:	Recombinant Arylsulfatase A (ARSA) corresponding to Pro21~ Ser295
Isotype:	IgG
Specificity:	The antibody is a rabbit polyclonal antibody raised against ARSA. It has been selected for its ability to recognize ARSA in immunohistochemical staining and western blotting.
Cross-Reactivity:	Mouse
Purification:	Antigen-specific affinity chromatography followed by Protein A affinity chromatography

## Target Details

Target:	Arylsulfatase A (ARSA)
---------	------------------------

## Target Details

Alternative Name:	Arylsulfatase A ( <a href="#">ARSA Products</a> )
Background:	MLD, ASA, Metachromatic Leucodystrophy, Cerebroside-sulfatase

## Application Details

Application Notes:	Western blotting: 0.5-2 µg/mL Immunohistochemistry: 5-20 µg/mL Immunocytochemistry: 5-20 µg/mL Optimal working dilutions must be determined by end user.
Comment:	The thermal stability is described by the loss rate. The loss rate was determined by accelerated thermal degradation test, that is, incubate the protein at 37°C for 48h, and no obvious degradation and precipitation were observed. The loss rate is less than 5% within the expiration date under appropriate storage condition.
Restrictions:	For Research Use only

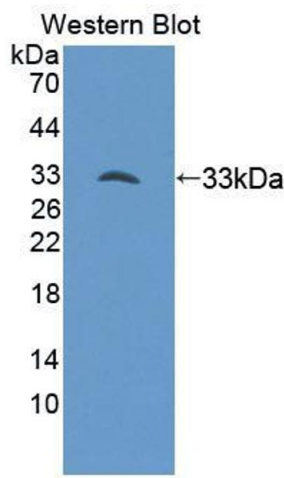
## Handling

Format:	Liquid
Concentration:	Lot specific
Buffer:	PBS, pH 7.4, containing 0.02 % Sodium azide, 50 % glycerol.
Preservative:	Sodium azide
Precaution of Use:	WARNING: Reagents contain sodium azide. Sodium azide is very toxic if ingested or inhaled. Avoid contact with skin, eyes, or clothing. Wear eye or face protection when handling. If skin or eye contact occurs, wash with copious amounts of water. If ingested or inhaled, contact a physician immediately. Sodium azide yields toxic hydrazoic acid under acidic conditions. Dilute azide-containing compounds in running water before discarding to avoid accumulation of potentially explosive deposits in lead or copper plumbing.
Handling Advice:	Avoid repeated freeze-thaw cycles.
Storage:	4 °C, -20 °C
Storage Comment:	Store at 4°C for frequent use. Stored at -20°C in a manual defrost freezer for two year without detectable loss of activity. Avoid repeated freeze-thaw cycles.
Expiry Date:	24 months



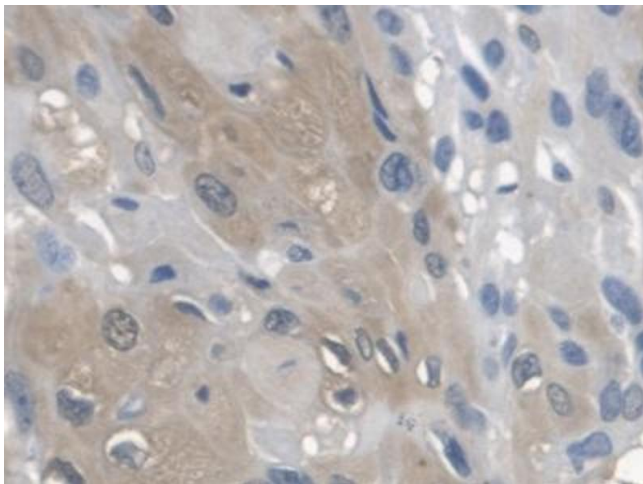
**Western Blotting**

**Image 1.** Western Blot; Sample: Mouse Kidney lysate; ;Primary Ab: 1µg/ml Rabbit Anti-Human ARSA Antibody;Second Ab: 0.2µg/mL HRP-Linked Caprine Anti-Rabbit IgG Polyclonal Antibody;(Catalog: SAA544Rb19)



**Western Blotting**

**Image 2.** Figure. Western Blot; Sample: Recombinant protein.



**Immunohistochemistry**

**Image 3.** DAB staining on IHC-P; Samples: Human Esophagus