

Datasheet for ABIN1867796
anti-ERN1 antibody (AA 571-832)[Go to Product page](#)

2 Images

Overview

Quantity:	100 µL
Target:	ERN1
Binding Specificity:	AA 571-832
Reactivity:	Human
Host:	Rabbit
Clonality:	Polyclonal
Conjugate:	This ERN1 antibody is un-conjugated
Application:	Western Blotting (WB), Immunohistochemistry (IHC), Immunocytochemistry (ICC), Immunoprecipitation (IP)

Product Details

Purpose:	Polyclonal Antibody to Endoplasmic Reticulum To Nucleus Signalling 1 (ERN1)
Immunogen:	Recombinant Endoplasmic Reticulum To Nucleus Signalling 1 (ERN1)
Isotype:	IgG
Specificity:	The antibody is a rabbit polyclonal antibody raised against ERN1. It has been selected for its ability to recognize ERN1 in immunohistochemical staining and western blotting.
Cross-Reactivity:	Mouse, Rat
Purification:	Antigen-specific affinity chromatography followed by Protein A affinity chromatography

Target Details

Target:	ERN1
Alternative Name:	Endoplasmic Reticulum To Nucleus Signalling 1 (ERN1 Products)
Background:	IRE1, IRE1P, Serine/Threonine-Protein Kinase/Endoribonuclease IRE1, Inositol-requiring protein 1, Ire1-alpha, Serine/threonine-protein kinase, Endoribonuclease
Pathways:	ER-Nucleus Signaling , Unfolded Protein Response

Application Details

Application Notes:	Western blotting: 0.5-2 µg/mL Immunohistochemistry: 5-20 µg/mL Immunocytochemistry: 5-20 µg/mL Optimal working dilutions must be determined by end user.
Comment:	The thermal stability is described by the loss rate. The loss rate was determined by accelerated thermal degradation test, that is, incubate the protein at 37°C for 48h, and no obvious degradation and precipitation were observed. The loss rate is less than 5% within the expiration date under appropriate storage condition.
Restrictions:	For Research Use only

Handling

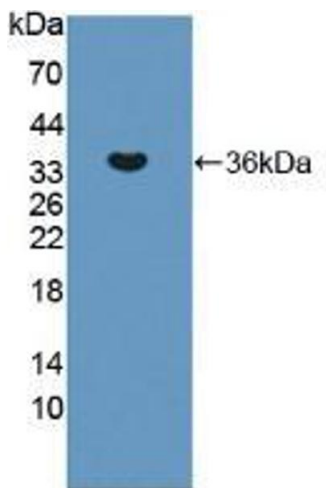
Format:	Liquid
Concentration:	Lot specific
Buffer:	0.01M PBS, pH 7.4, containing 0.05 % Proclin-300, 50 % glycerol.
Preservative:	ProClin
Precaution of Use:	WARNING: Reagents contain sodium azide. Sodium azide is very toxic if ingested or inhaled. Avoid contact with skin, eyes, or clothing. Wear eye or face protection when handling. If skin or eye contact occurs, wash with copious amounts of water. If ingested or inhaled, contact a physician immediately. Sodium azide yields toxic hydrazoic acid under acidic conditions. Dilute azide-containing compounds in running water before discarding to avoid accumulation of potentially explosive deposits in lead or copper plumbing.
Handling Advice:	Avoid repeated freeze-thaw cycles.
Storage:	4 °C,-20 °C
Storage Comment:	Store at 4°C for frequent use. Stored at -20°C in a manual defrost freezer for two year without

Handling

detectable loss of activity. Avoid repeated freeze-thaw cycles.

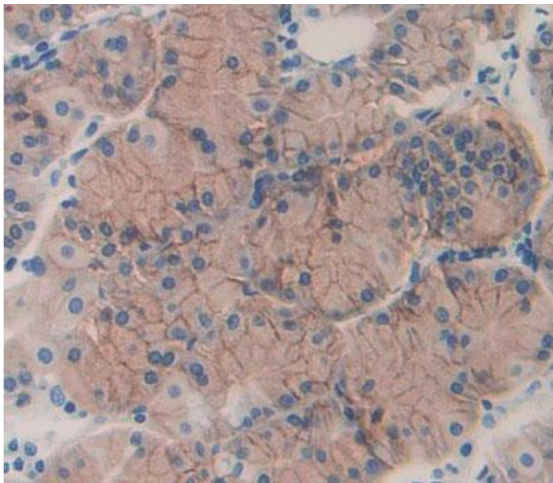
Expiry Date: 24 months

Images



Western Blotting

Image 1. Figure. Western Blot; Sample: Recombinant ERN1, Human.



Immunohistochemistry

Image 2. Figure.DAB staining on IHC-P. Samples: Human Tissue