

Datasheet for ABIN1868088  
**anti-GADD45G antibody (AA 1-159)**



[Go to Product page](#)

2 Images

## Overview

Quantity:	100 µL
Target:	GADD45G
Binding Specificity:	AA 1-159
Reactivity:	Mouse
Host:	Rabbit
Clonality:	Polyclonal
Conjugate:	This GADD45G antibody is un-conjugated
Application:	Western Blotting (WB), Immunohistochemistry (IHC), Immunocytochemistry (ICC), Immunoprecipitation (IP)

## Product Details

Purpose:	Polyclonal Antibody to Growth Arrest And DNA Damage Inducible Protein Gamma (GADD45g)
Immunogen:	RPL536Mu01Recombinant Growth Arrest And DNA Damage Inducible Protein Gamma (GADD45g)
Isotype:	IgG
Specificity:	The antibody is a rabbit polyclonal antibody raised against GADD45g. It has been selected for its ability to recognize GADD45g in immunohistochemical staining and western blotting.
Cross-Reactivity:	Human, Rat
Purification:	Antigen-specific affinity chromatography followed by Protein A affinity chromatography

## Target Details

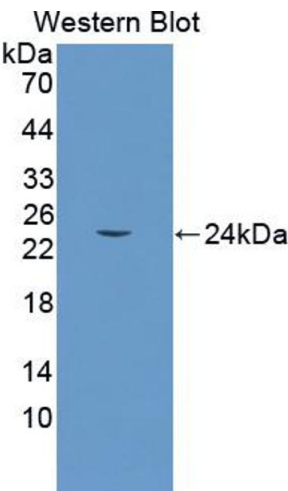
Target:	GADD45G
Alternative Name:	GADD45g ( <a href="#">GADD45G Products</a> )
Background:	CR6, DDIT2, GADD45gamma, GRP17, Gadd-Related Protein,17 kD, Cytokine-responsive protein CR6, DNA damage-inducible transcript 2 protein
Pathways:	<a href="#">Cell Division Cycle</a>

## Application Details

Application Notes:	Western blotting: 0.5-2 µg/mL,Immunohistochemistry: 5-20 µg/mL,Immunocytochemistry: 5-20 µg/mL,Optimal working dilutions must be determined by end user.
Comment:	The thermal stability is described by the loss rate. The loss rate was determined by accelerated thermal degradation test, that is, incubate the protein at 37°C for 48h, and no obvious degradation and precipitation were observed. The loss rate is less than 5% within the expiration date under appropriate storage condition.
Restrictions:	For Research Use only

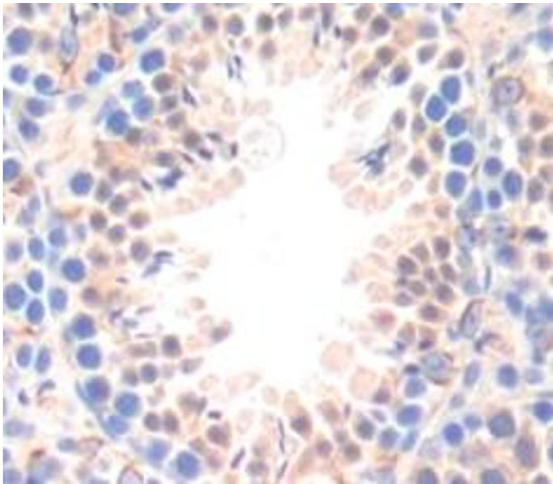
## Handling

Format:	Liquid
Concentration:	500 µg/mL
Buffer:	0.01M PBS, pH 7.4, containing 0.05 % Proclin-300, 50 % glycerol.
Preservative:	ProClin
Precaution of Use:	WARNING: Reagents contain sodium azide. Sodium azide is very toxic if ingested or inhaled. Avoid contact with skin, eyes, or clothing. Wear eye or face protection when handling. If skin or eye contact occurs, wash with copious amounts of water. If ingested or inhaled, contact a physician immediately. Sodium azide yields toxic hydrazoic acid under acidic conditions. Dilute azide-containing compounds in running water before discarding to avoid accumulation of potentially explosive deposits in lead or copper plumbing.
Handling Advice:	Avoid repeated freeze-thaw cycles.
Storage:	4 °C,-20 °C
Storage Comment:	Store at 4°C for frequent use. Stored at -20°C in a manual defrost freezer for two year without detectable loss of activity. Avoid repeated freeze-thaw cycles.



Western Blotting

**Image 1.** Figure. Western Blot; Sample: Recombinant protein.



Immunohistochemistry

**Image 2.** Figure.DAB staining on IHC-P. Samples: Mouse Tissue