

Datasheet for ABIN1870125  
**anti-SHP1 antibody (AA 244-515)**



[Go to Product page](#)

2 Images

## Overview

Quantity:	100 µL
Target:	SHP1 (PTPN6)
Binding Specificity:	AA 244-515
Reactivity:	Human
Host:	Rabbit
Clonality:	Polyclonal
Conjugate:	This SHP1 antibody is un-conjugated
Application:	Western Blotting (WB), Immunohistochemistry (IHC), Immunocytochemistry (ICC), Immunoprecipitation (IP)

## Product Details

Purpose:	Polyclonal Antibody to Protein Tyrosine Phosphatase, Non Receptor Type 6 (PTPN6)
Immunogen:	PTPN6 (Phe244-Phe515)
Isotype:	IgG
Specificity:	The antibody is a rabbit polyclonal antibody raised against PTPN6. It has been selected for its ability to recognize PTPN6 in immunohistochemical staining and western blotting.
Cross-Reactivity:	Mouse, Pig, Rat
Purification:	Antigen-specific affinity chromatography followed by Protein A affinity chromatography

## Target Details

---

Target:	SHP1 (PTPN6)
Alternative Name:	PTPN6 ( <a href="#">PTPN6 Products</a> )
Background:	HCP, HCPH, HPTP1C, SH-PTP1, SHP-1L, SHP1, Hematopoietic cell protein-tyrosine phosphatase, Protein-tyrosine phosphatase 1C, Protein-tyrosine phosphatase SHP-1
Pathways:	<a href="#">JAK-STAT Signaling</a> , <a href="#">TCR Signaling</a> , <a href="#">TLR Signaling</a> , <a href="#">Nuclear Receptor Transcription Pathway</a> , <a href="#">Positive Regulation of Peptide Hormone Secretion</a> , <a href="#">Steroid Hormone Mediated Signaling Pathway</a> , <a href="#">Response to Growth Hormone Stimulus</a> , <a href="#">Regulation of Leukocyte Mediated Immunity</a> , <a href="#">CXCR4-mediated Signaling Events</a> , <a href="#">Signaling Events mediated by VEGFR1 and VEGFR2</a> , <a href="#">BCR Signaling</a>

## Application Details

---

Application Notes:	Western blotting: 0.2-2 µg/mL, 1:250-2500 Immunohistochemistry: 5-20 µg/mL, 1:25-100 Immunocytochemistry: 5-20 µg/mL, 1:25-100 Optimal working dilutions must be determined by end user.
Comment:	The thermal stability is described by the loss rate. The loss rate was determined by accelerated thermal degradation test, that is, incubate the protein at 37°C for 48h, and no obvious degradation and precipitation were observed. The loss rate is less than 5% within the expiration date under appropriate storage condition.
Restrictions:	For Research Use only

## Handling

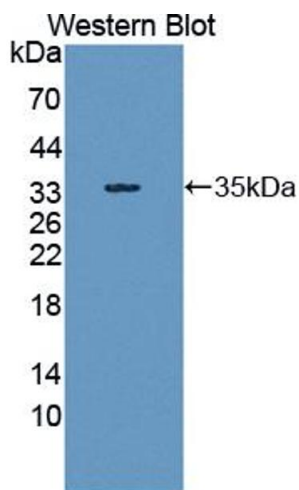
---

Format:	Liquid
Concentration:	500 µg/mL
Buffer:	PBS, pH 7.4, containing 0.01 % SKL, 1 mM DTT, 5 % Trehalose and Proclin300.
Preservative:	Dithiothreitol (DTT), ProClin
Precaution of Use:	WARNING: Reagents contain sodium azide. Sodium azide is very toxic if ingested or inhaled. Avoid contact with skin, eyes, or clothing. Wear eye or face protection when handling. If skin or eye contact occurs, wash with copious amounts of water. If ingested or inhaled, contact a physician immediately. Sodium azide yields toxic hydrazoic acid under acidic conditions. Dilute azide-containing compounds in running water before discarding to avoid accumulation of potentially explosive deposits in lead or copper plumbing.

## Handling

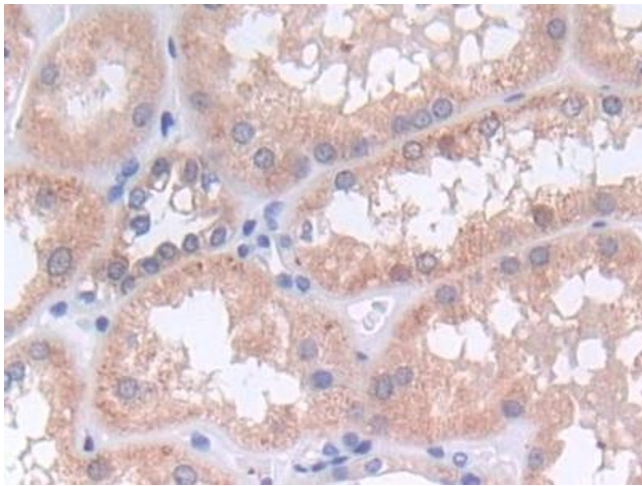
Handling Advice:	Avoid repeated freeze-thaw cycles.
Storage:	4 °C,-20 °C
Storage Comment:	Store at 4°C for frequent use. Stored at -20°C in a manual defrost freezer for two year without detectable loss of activity. Avoid repeated freeze-thaw cycles.
Expiry Date:	12 months

## Images



### Western Blotting

**Image 1.** Figure. Western Blot; Sample: Recombinant protein.



### Immunohistochemistry

**Image 2.** DAB staining on IHC-P; Samples: Human Kidney Tissue