



[Go to Product page](#)

Datasheet for ABIN1874092

anti-PEBP1 antibody

3 Images

Overview

Quantity:	100 µL
Target:	PEBP1
Reactivity:	Human, Mouse, Rat
Host:	Rabbit
Clonality:	Polyclonal
Application:	Western Blotting (WB), Immunohistochemistry (IHC), Immunoprecipitation (IP), Immunofluorescence (IF), RNA-Binding Protein Immunoprecipitation (RIP)

Product Details

Immunogen:	Recombinant protein of human PEBP1
Isotype:	IgG
Characteristics:	Expected molecular weight of target: 187 kDa
Purification:	Affinity purification

Target Details

Target:	PEBP1
Alternative Name:	PEBP1 (PEBP1 Products)
Gene ID:	5037
UniProt:	P30086
Pathways:	Feeding Behaviour

Application Details

Application Notes: WB 1:500-1:2000, IHC 1:50-1:200, IF 1:50-1:200, IP 1:20-1:50R, IP 1:20-1:50

Restrictions: For Research Use only

Handling

Format: Liquid

Concentration: 1 mg/mL

Buffer: PBS with 0.02 % sodium azide, 50 % glycerol, pH 7.4

Preservative: Sodium azide

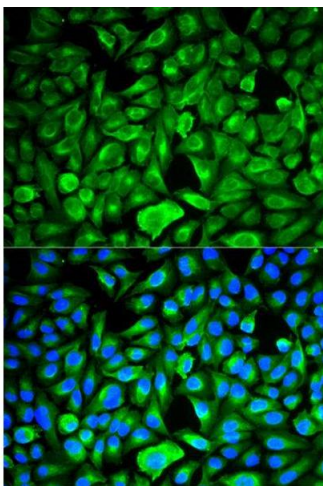
Precaution of Use: This product contains Sodium azide: a POISONOUS AND HAZARDOUS SUBSTANCE which should be handled by trained staff only.

Handling Advice: Avoid repeated freeze/thaw cycles.

Storage: -20 °C

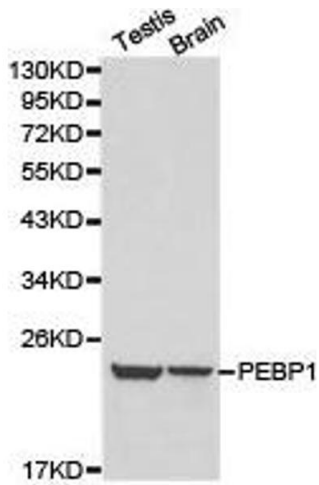
Storage Comment: Store at -20°C.

Images



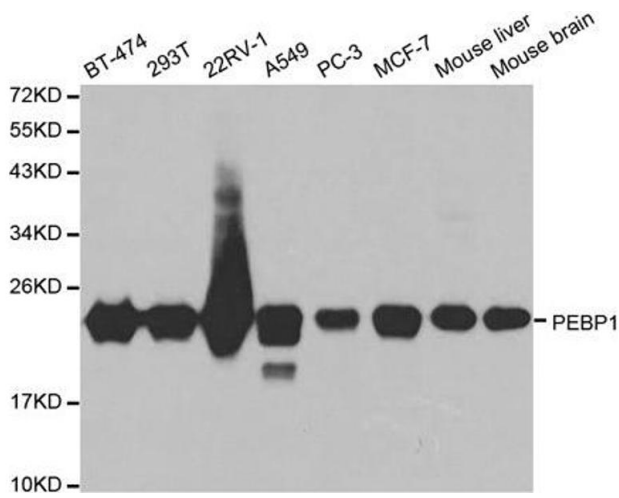
Immunofluorescence

Image 1. Immunofluorescence analysis of HeLa cell using PEBP1 antibody. Blue: DAPI for nuclear staining.



Western Blotting

Image 2.



Western Blotting

Image 3. Western blot analysis of extracts of various cell lines, using PEBP1 antibody.